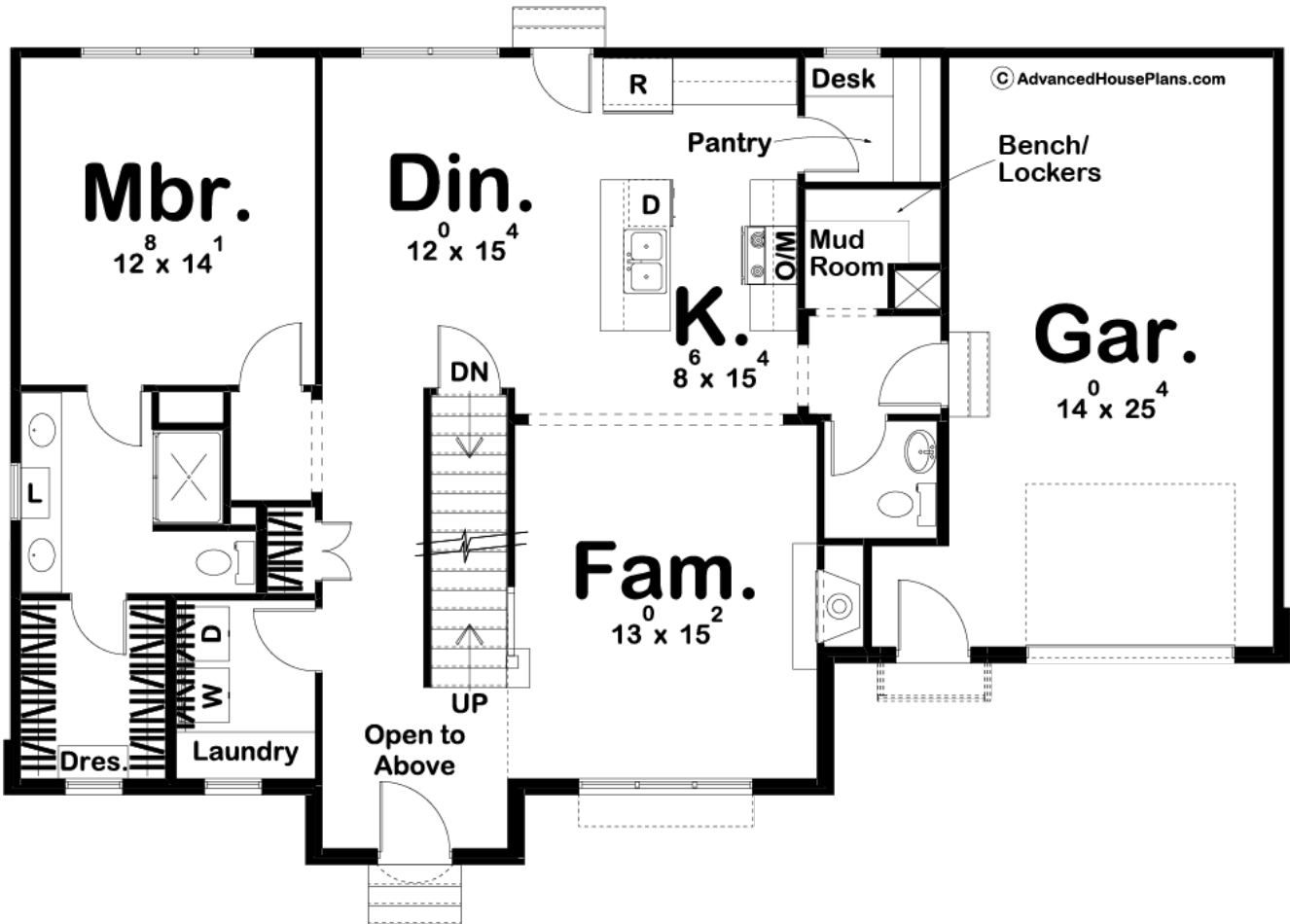
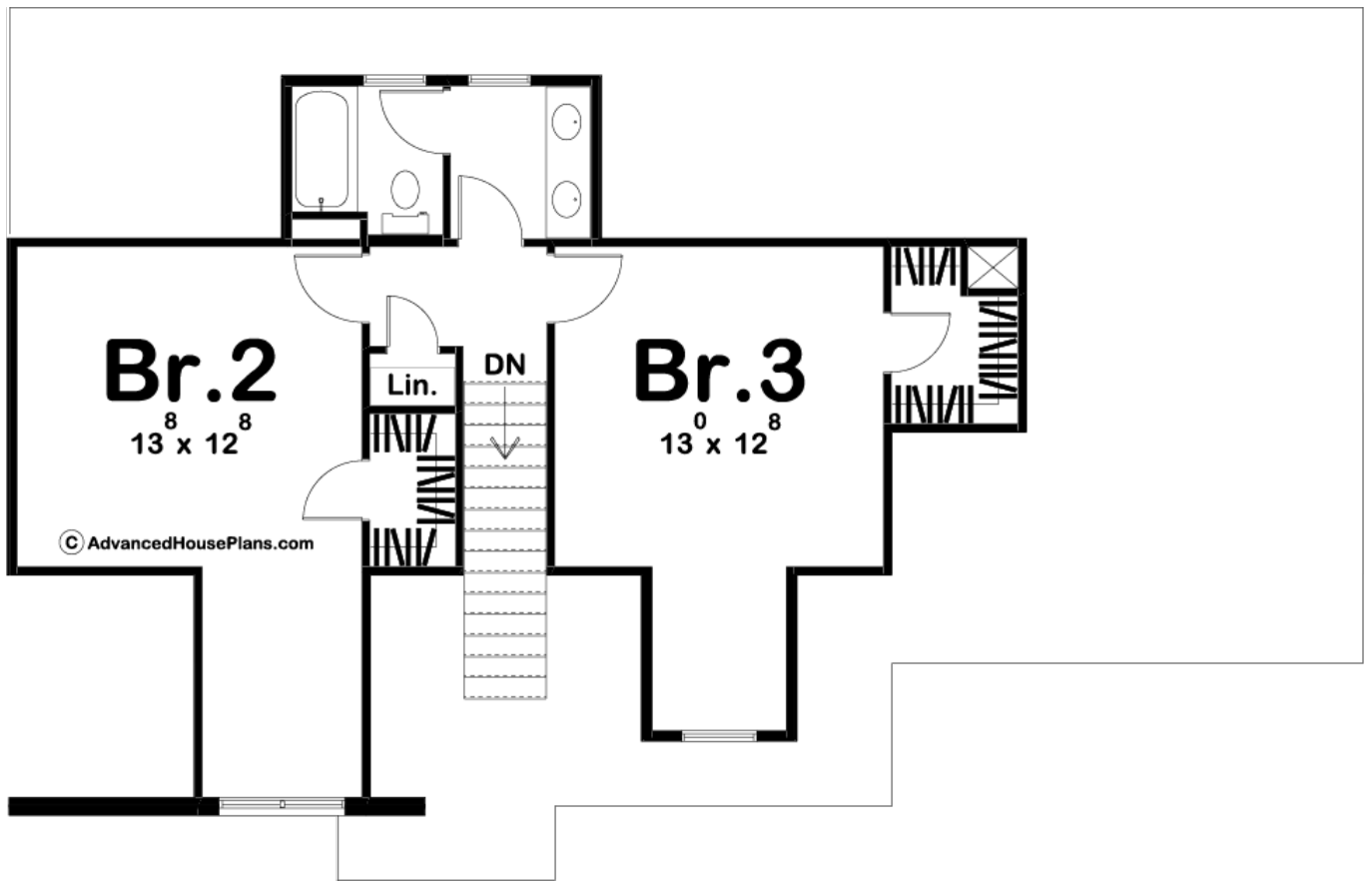




**29732 - Florence Heights Data Sheet**

1921 SQ FT	3 BEDS	3 BATHS	1 BAYS	55' 0" WIDE	35' 0" DEEP
---------------	-----------	------------	-----------	----------------	----------------





## Construction Specs

### Layout

Bedrooms	3
Bathrooms	3
Garage Bays	1

### Square Footage

Main Level	1254 Sq. Ft.
Second Level	667 Sq. Ft.
Garage	388 Sq. Ft.
Total Finished Area	1921 Sq. Ft.

### Exterior Dimensions

Width	55' 0"
Depth	35' 0"

### Default Construction Stats

*Stats are unique to the individual plan.*

Foundation Type	Basement
-----------------	----------

Exterior Wall Construction	2x4
Roof Pitches	12/12 Primary, 4/12 16/12 Secondary
Foundation Wall Height	9'
Main Wall Height	9'
Second Wall Height	8'

## Plan Description

The Florence Heights plan gives off a cozy and inviting cottage look and mixes in plenty of modern amenities. This house has wonderful curb appeal. Inside the home, the floorplan feels larger than it is with its open concept. The family room, dinette, and kitchen flow seamlessly together. The family room is warmed by a fireplace with a hearth. The kitchen includes a large island with a flush snack bar. The Master suite is conveniently located on the main floor and includes his/her vanities, a walk-in shower and a large walk-in closet with a built-in dresser. Upstairs, you will find 2 bedrooms, bedrooms 2 and 3 share a conveniently located hall bathroom and each has its own walk-in closet. Back on the main floor, the 1 car garage accesses the home through a convenient mudroom.