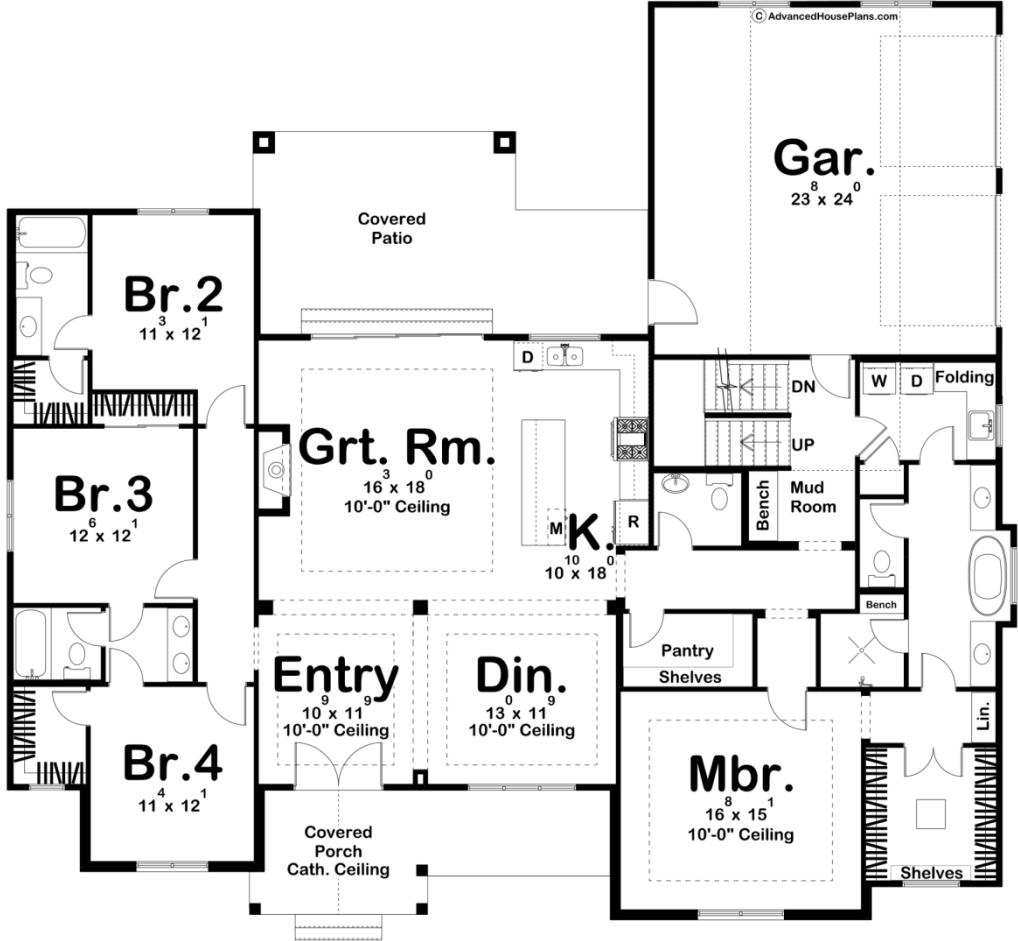
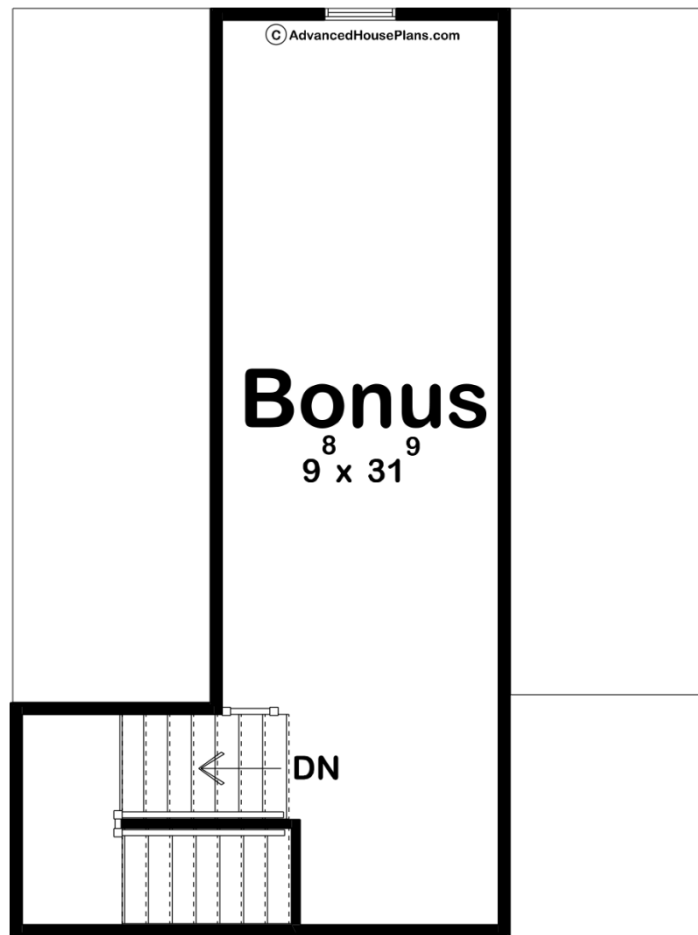




30222 - Fairview Data Sheet

| | | | | | |
|---------------|-----------|------------|-----------|----------------|----------------|
| 2553 SQ FT | 4 BEDS | 4 BATHS | 2 BAYS | 69' 8" WIDE | 63' 0" DEEP |
|---------------|-----------|------------|-----------|----------------|----------------|





Construction Specs

Layout

| | |
|-------------|---|
| Bedrooms | 4 |
| Bathrooms | 4 |
| Garage Bays | 2 |

Square Footage

| | |
|---------------------|--------------|
| Main Level | 2553 Sq. Ft. |
| Covered Area | 511 Sq. Ft. |
| Garage | 592 Sq. Ft. |
| Total Finished Area | 2553 Sq. Ft. |

Exterior Dimensions

| | |
|-------|--------|
| Width | 69' 8" |
| Depth | 63' 0" |

Default Construction Stats

Stats are unique to the individual plan.

| | |
|-----------------|----------|
| Foundation Type | Basement |
|-----------------|----------|

| | |
|----------------------------|-------------------------------|
| Exterior Wall Construction | 2x4 |
| Roof Pitches | Primary 8/12, Secondary 12/12 |
| Foundation Wall Height | 9' |
| Main Wall Height | 9' |

Plan Description

The Fairview plan is a beautiful modern farmhouse that has a gorgeous curb appeal combining board, batten and brick in a wonderful way. Walking into the home via the covered cathedral ceiling porch, you are greeted by a spacious entryway and main living area with 10 foot ceilings. Pillars in between each room help divide the space while maintaining the open floor plan. The kitchen has a large island with a breakfast bar, as well as a walk-in pantry just off to the side. Also in the same space is the great room with a built-in fireplace, and access to a covered patio. Each side of the house has bedrooms, the left being the additional 3 bedrooms with two baths, and the right side being the master suite. The master includes a very large walk-in closet and bathroom, complete with separate shower and toilet areas, a soaking tub, and double vanities. The suite had access to the laundry room, which also leads to the two-car garage and mudroom. A case of stairs are also found in this area, which head upstairs to an unfinished bonus room that provides 391 extra square feet.