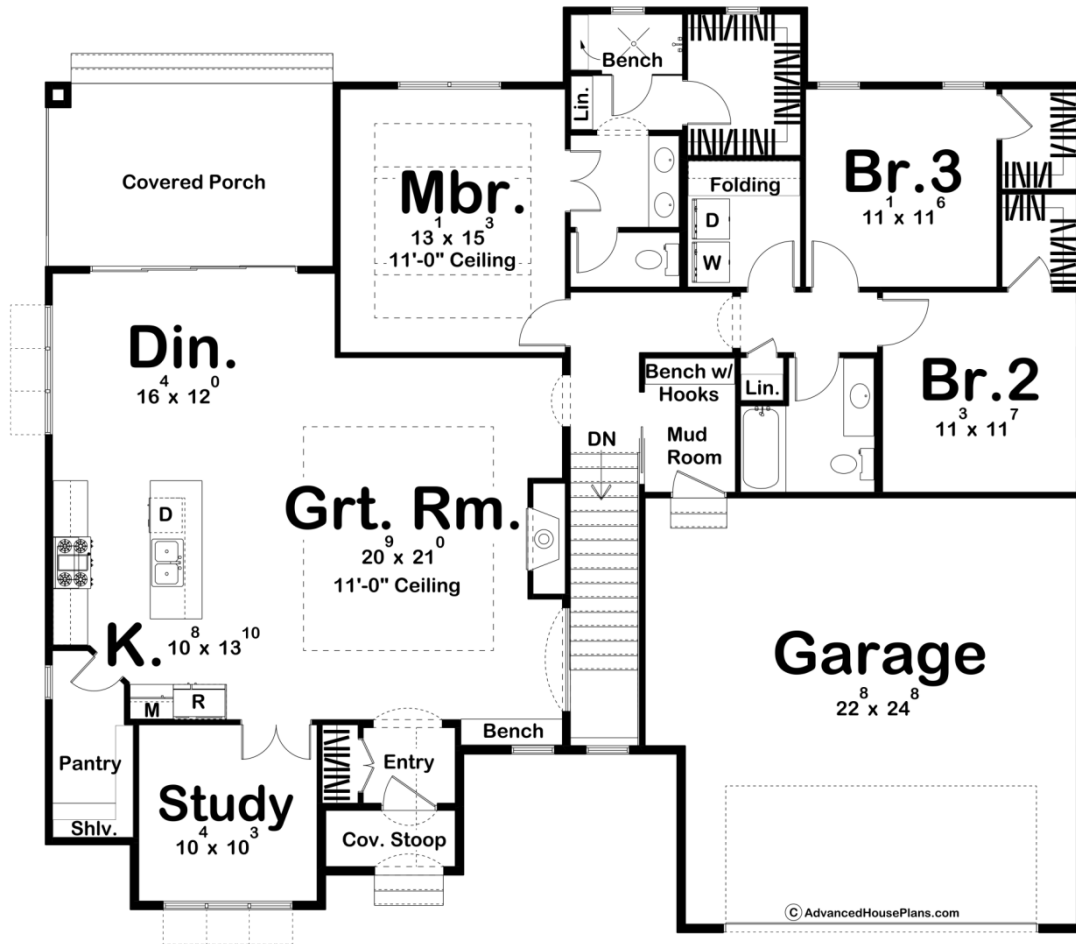
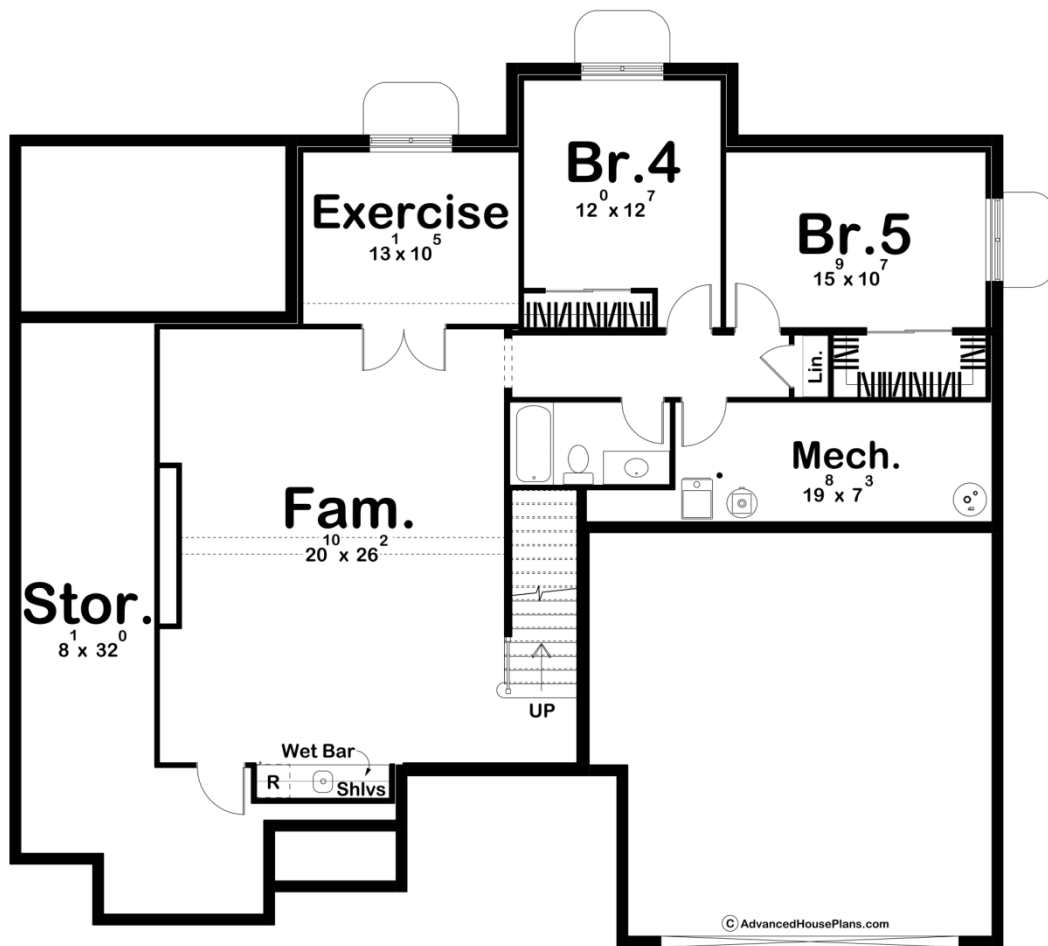




30197 - Evans Brook Data Sheet

| | | | | | |
|---------------|-----------|------------|-----------|----------------|----------------|
| 1984 SQ FT | 3 BEDS | 2 BATHS | 2 BAYS | 60' 0" WIDE | 53' 4" DEEP |
|---------------|-----------|------------|-----------|----------------|----------------|





Construction Specs

Layout

| | |
|-------------|---|
| Bedrooms | 3 |
| Bathrooms | 2 |
| Garage Bays | 2 |

Square Footage

| | |
|---------------------|--------------|
| Main Level | 1984 Sq. Ft. |
| Covered Area | 207 Sq. Ft. |
| Garage | 612 Sq. Ft. |
| Total Finished Area | 1984 Sq. Ft. |

Exterior Dimensions

| | |
|-------|--------|
| Width | 60' 0" |
| Depth | 53' 4" |

Default Construction Stats

Stats are unique to the individual plan.

| | |
|-----------------|----------|
| Foundation Type | Basement |
|-----------------|----------|

| | |
|----------------------------|--------------------------------|
| Exterior Wall Construction | 2x4 |
| Roof Pitches | Primary 10/12, Secondary 16/12 |
| Foundation Wall Height | 9' |
| Main Wall Height | 10' |

Plan Description

The Evans Brook plan is a beautiful cottage style plan with a gorgeous curb appeal. The stone accents on the outside of the home are a perfect touch for adding dimension to the home. As you walk up to the front of the house, there is a beautiful entryway that welcomes you inside. A few steps in, and you're in a large space complete with the great room, dining room, study, and kitchen. The kitchen has a large walk-in pantry, as well as a kitchen island with a breakfast bar and an entrance to a private study. The dining room has large sliding doors, perfect for stepping outside on the covered porch after a meal. Heading through the great room and into a hallway leads you to the bedrooms. All bedrooms have walk-in closets, and bedrooms two and three share a hallway bathroom. The master has 11 foot ceilings, and is complete with a large bathroom, with double vanities and private areas for the shower and toilet, as well as a large walk-in closet. Along with the hallway to the bedrooms, there are also stairs that go down to an optional basement. This space allows for two additional bedrooms, a bathroom, family room, exercise room, as well as a large storage space and wet bar.