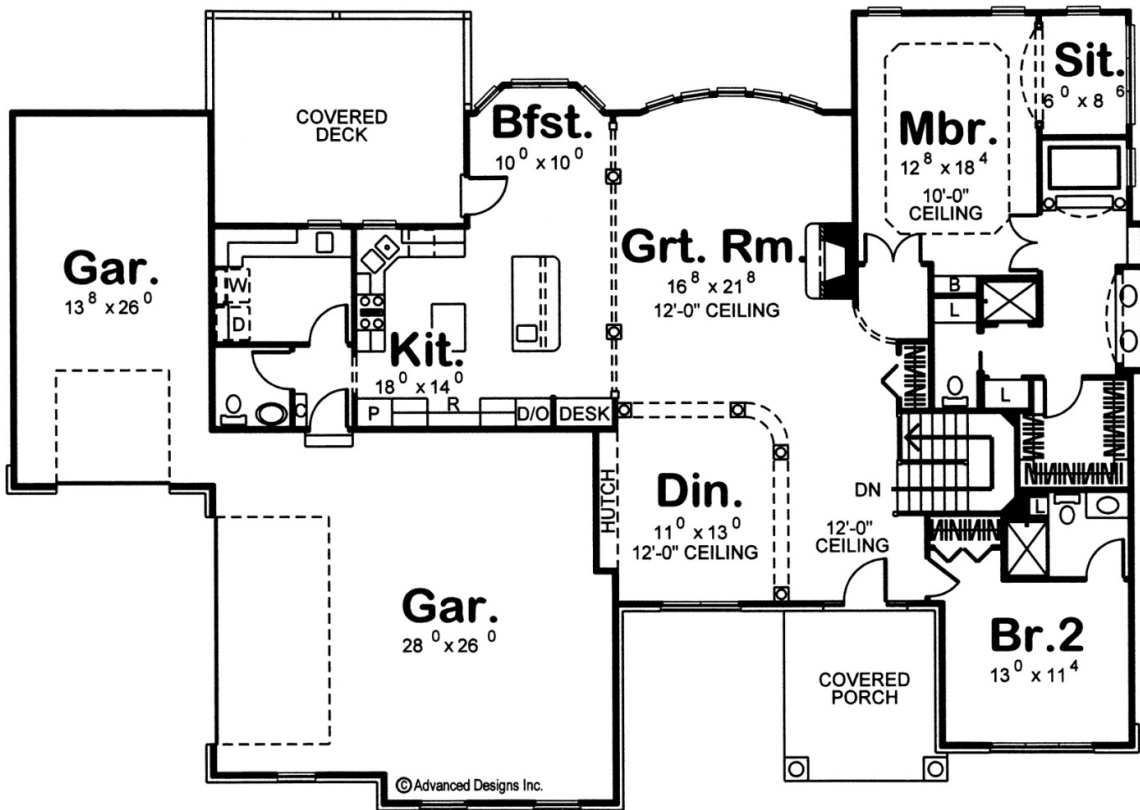




29142 - Dutton Data Sheet

2109 SQ FT	2 BEDS	3 BATHS	3 BAYS	80' 0" WIDE	56' 0" DEEP
---------------	-----------	------------	-----------	----------------	----------------



FINISHED BASEMENT
AVAILABLE

Construction Specs

Layout

Bedrooms

Bathrooms	3
-----------	---

Garage Bays	3
-------------	---

Square Footage

Main Level	2109 Sq. Ft.
------------	--------------

Garage	1090 Sq. Ft.
--------	--------------

Total Finished Area	2109 Sq. Ft.
---------------------	--------------

Exterior Dimensions

Width	80' 0"
-------	--------

Depth	56' 0"
-------	--------

Ridge Height	26'
--------------	-----

Calculated from main floor line

Default Construction Stats

Stats are unique to the individual plan.

Foundation Type	Basement
-----------------	----------

Exterior Wall Construction	2x4
----------------------------	-----

Roof Pitches	8/12 F-B, 9/12 S-S
--------------	--------------------

Foundation Wall Height	9'
------------------------	----

Main Wall Height	9'
------------------	----

Plan Description

This is a single story traditional house with a covered porch in front and a covered deck in the rear, off the breakfast nook. There is an open floor plan, with a large kitchen and family area. There is a large master suite and a 1090 sq. ft. 3 car garage.