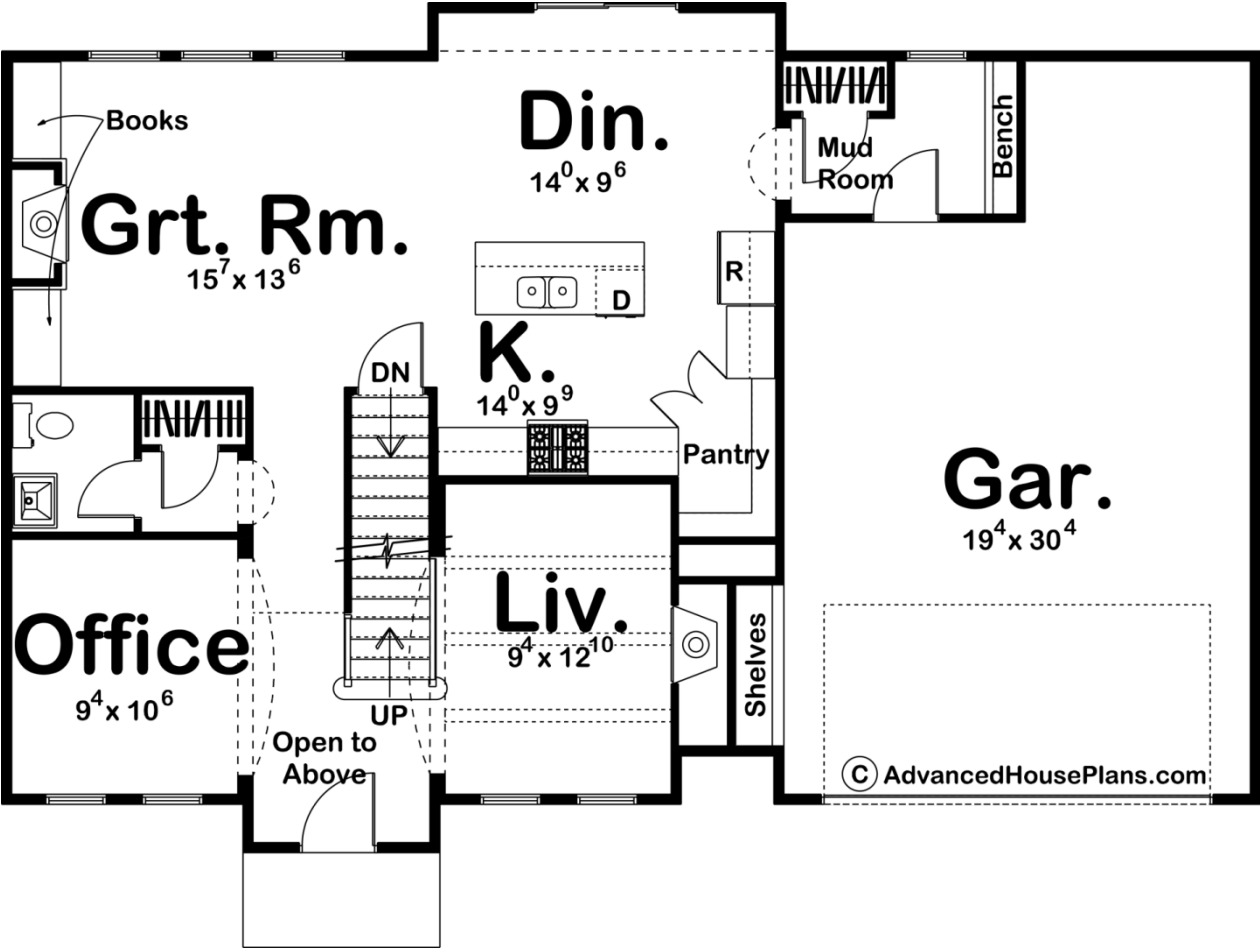
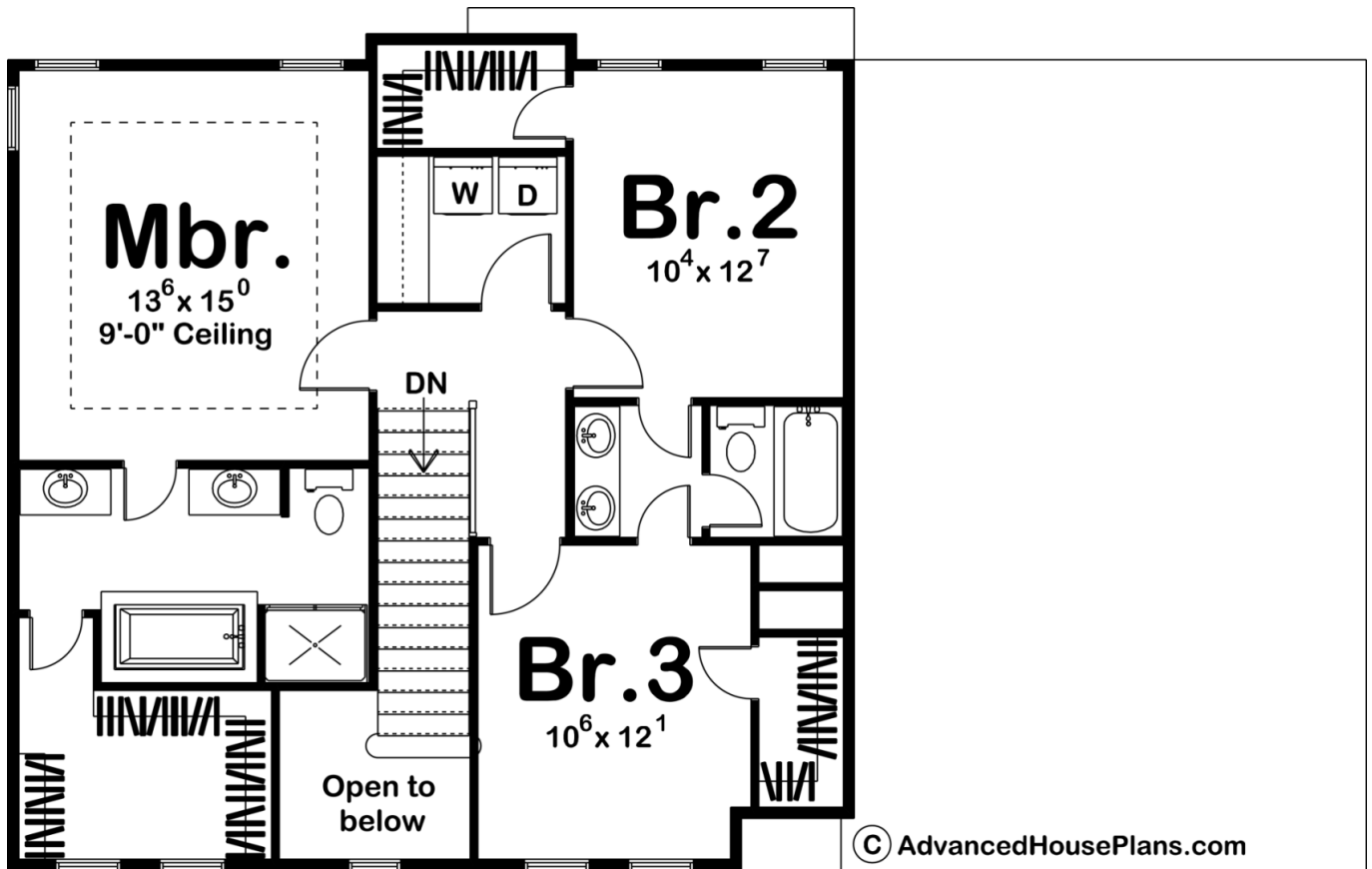




29315 - Duncan Data Sheet

1998 SQ FT	3 BEDS	3 BATHS	2 BAYS	52' 0" WIDE	39' 0" DEEP
---------------	-----------	------------	-----------	----------------	----------------





Construction Specs

Layout

Bedrooms	3
Bathrooms	3
Garage Bays	2

Square Footage

Main Level	1084 Sq. Ft.
Second Level	914 Sq. Ft.
Garage	554 Sq. Ft.
Total Finished Area	1998 Sq. Ft.

Exterior Dimensions

Width	52' 0"
Depth	39' 0"
Ridge Height	33'
<i>Calculated from main floor line</i>	

Default Construction Stats
Stats are unique to the individual plan.

Foundation Type	Basement
Exterior Wall Construction	2x4
Roof Pitches	Primary 8/12, Secondary 10/12
Foundation Wall Height	9'
Main Wall Height	9'
Second Wall Height	8'

Plan Description

Classic Colonial styling and a cost-effective "footprint" makes this 2-story house plan an ideal choice for any neighborhood. Entrance through the gabled front stoop reveals immediate views of the office area and formal living room with fireplace. A greater degree of privacy is enjoyed toward the rear of the home where the great room, dining area and kitchen share open space. The great room is warmed by a fireplace and brightened by a bank of windows to the rear. The kitchen features a work island with breakfast bar and a walk-in pantry. Just off the dining area, a mud room with coat closet and bench intercepts traffic from the 2-car garage, which features additional space for storage or possibly a work area. On the second level, the master suite features his and her vanities, soaking tub, shower and a walk-in closet. Bedrooms 2 and 3 each have walk-in closets and share a Jack-n-Jill bath. A centrally located laundry with folding counter conveniently serves all bedrooms.