

# ADVANCED

HOUSE PLANS



## 30408 - Douglas Data Sheet

2783  
SQ FT

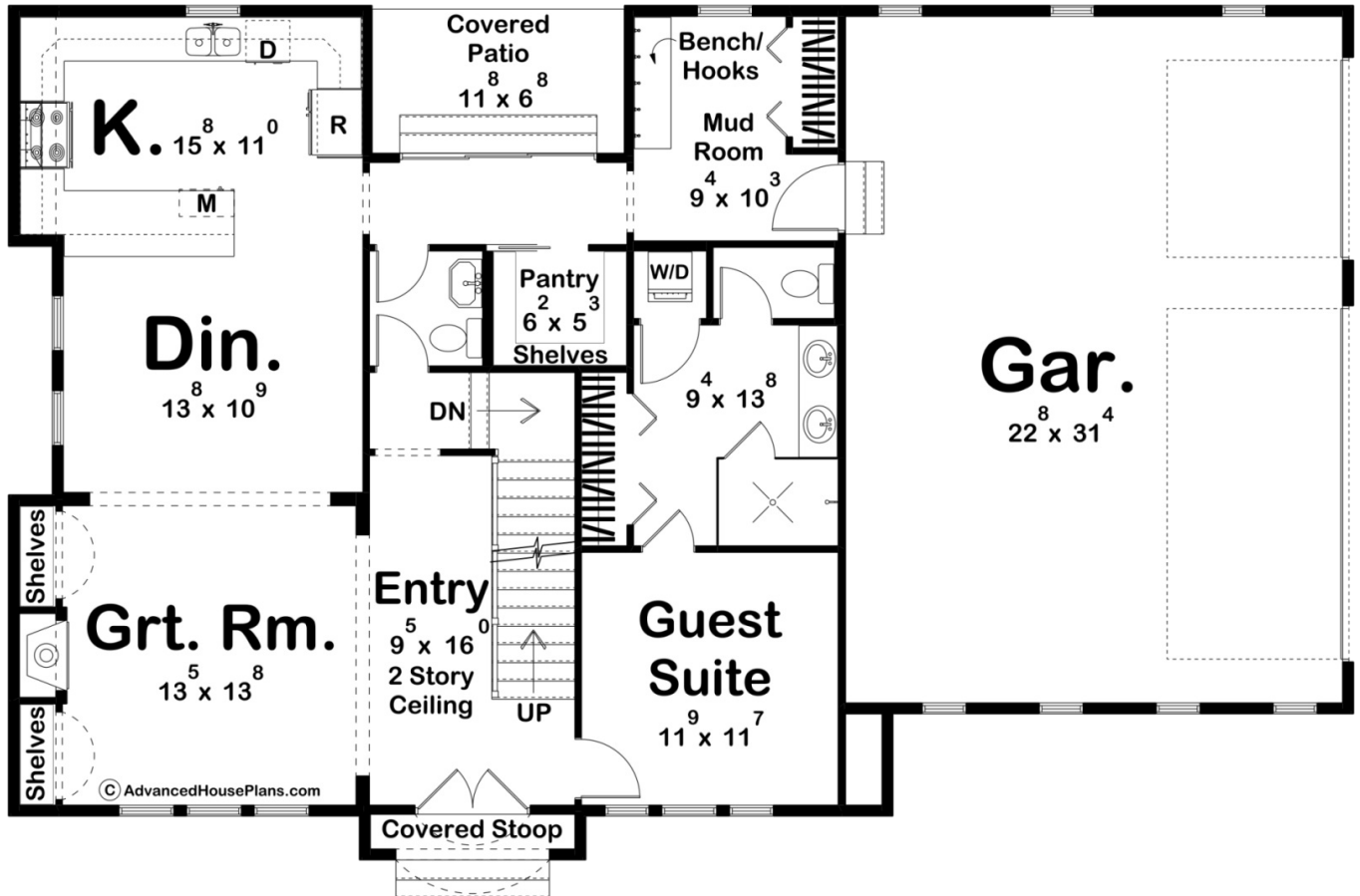
5  
BEDS

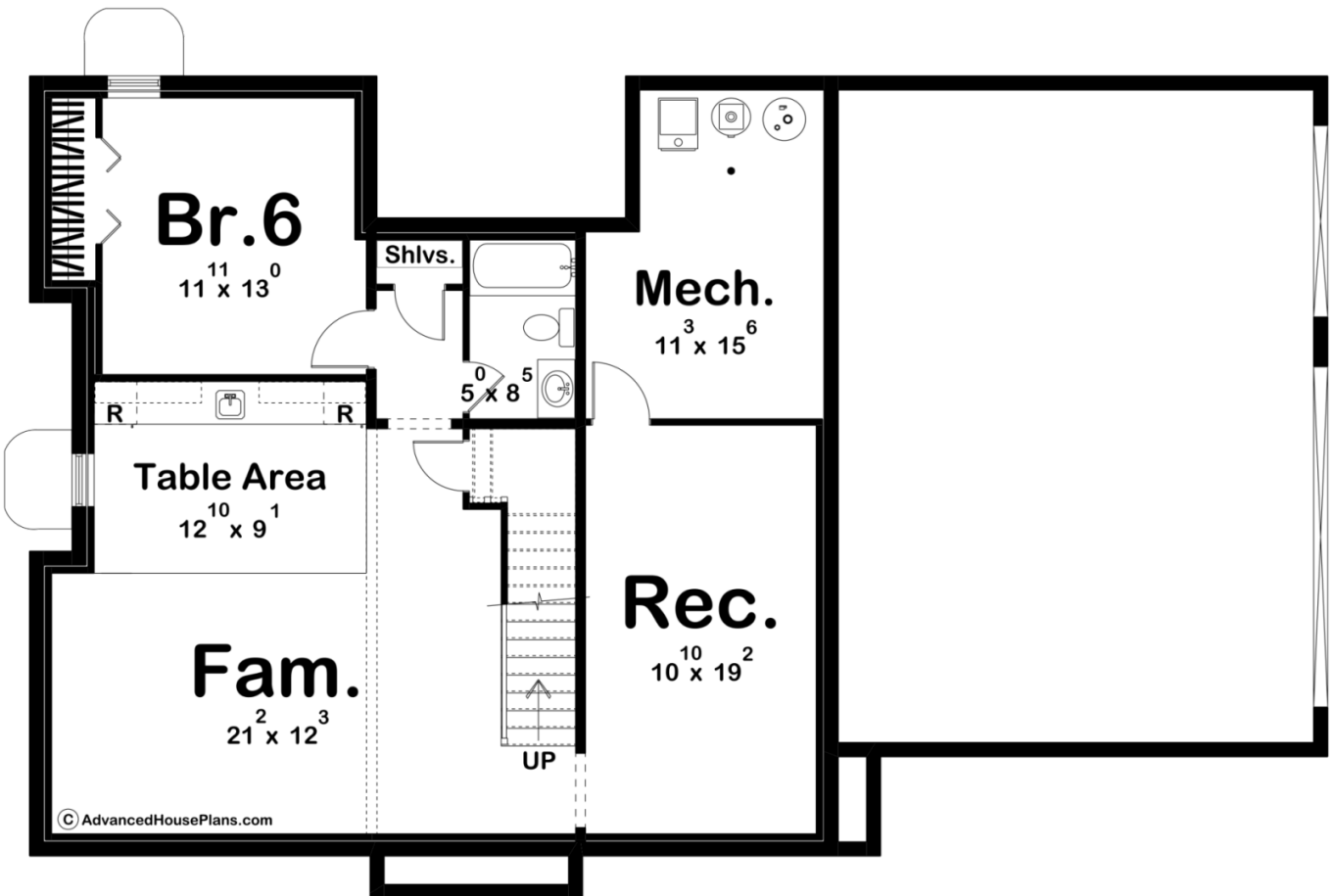
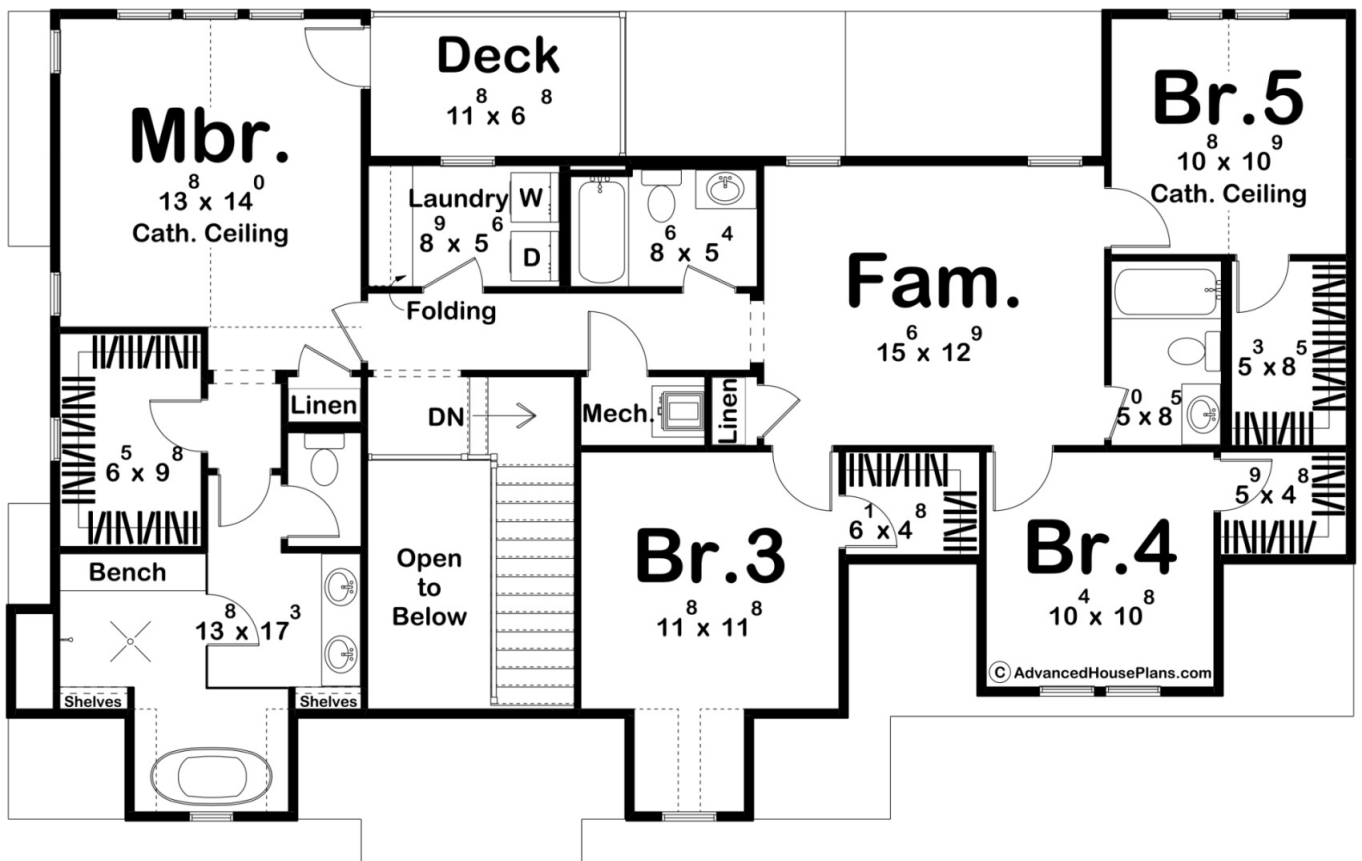
5  
BATHS

3  
BAYS

61' 0"  
WIDE

38' 8"  
DEEP





Layout		
Bedrooms		5
Bathrooms		5
Garage Bays		3
Square Footage		
Main Level		1292 Sq. Ft.
Second Level		1491 Sq. Ft.
Covered Area		98 Sq. Ft.
Garage		736 Sq. Ft.
Total Finished Area		2783 Sq. Ft.
Exterior Dimensions		
Width		61' 0"
Depth		38' 8"
Default Construction Stats		
Stats are unique to the individual plan.		
Foundation Type		Basement
Exterior Wall Construction		2x4
Roof Pitches	Primary 8/12, Secondary 12/12, Secondary 16/12	
Foundation Wall Height		9'
Main Wall Height		9'
Second Wall Height		8'

## Plan Description

Welcome to the epitome of timeless elegance and charm! Allow me to present to you a stunning Tudor-style residence that seamlessly blends traditional craftsmanship with modern luxury. This 5-bedroom, 5-bathroom masterpiece is designed to cater to both your family's needs and your desire for refined living. As you approach the property, you'll be captivated by the charming facade, characterized by steeply pitched roofs and exquisite brickwork. Step through the front door into a warm and inviting foyer, adorned with intricate woodwork and leaded glass accents. The expansive living room features a magnificent fireplace, perfect for cozy gatherings during colder months. The open floor plan seamlessly connects the living space to the dining area, creating an ideal setting for entertaining guests. The heart of this home is undoubtedly the gourmet kitchen. Whether you're a seasoned chef or simply enjoy casual family meals, this kitchen is designed to cater to your culinary aspirations. This home boasts five spacious bedrooms. The master suite is a sanctuary of relaxation, featuring a spa-like bathroom with a soaking tub, dual vanities, and a walk-in closet. Additionally, a thoughtfully designed guest suite provides a comfortable and private space.