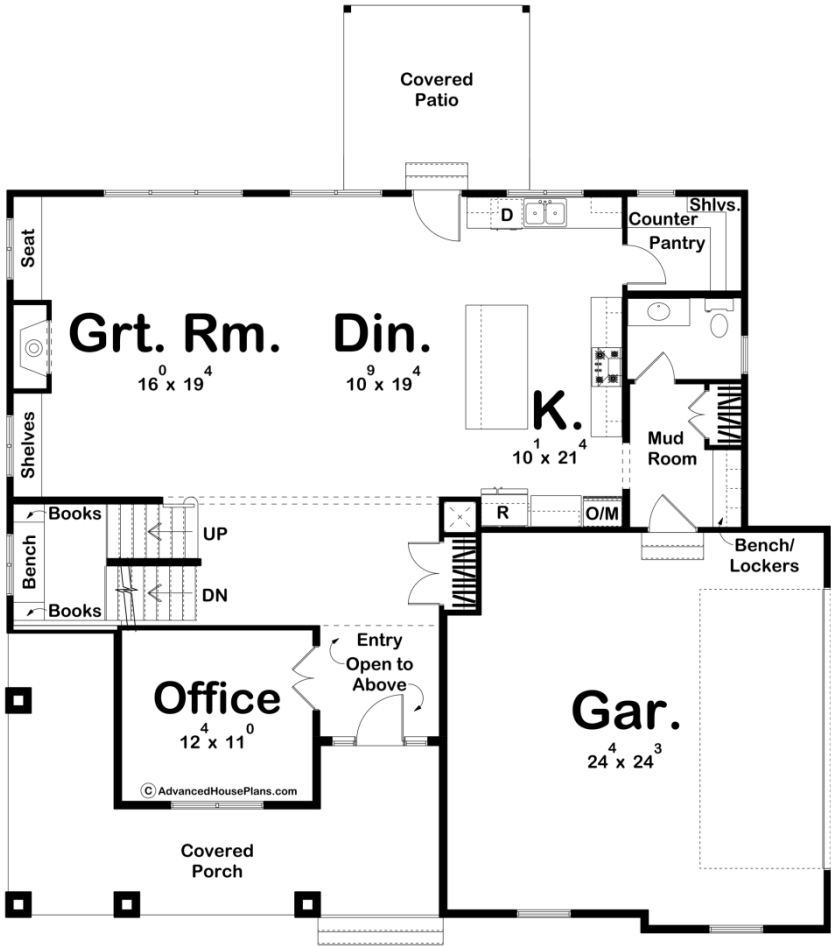
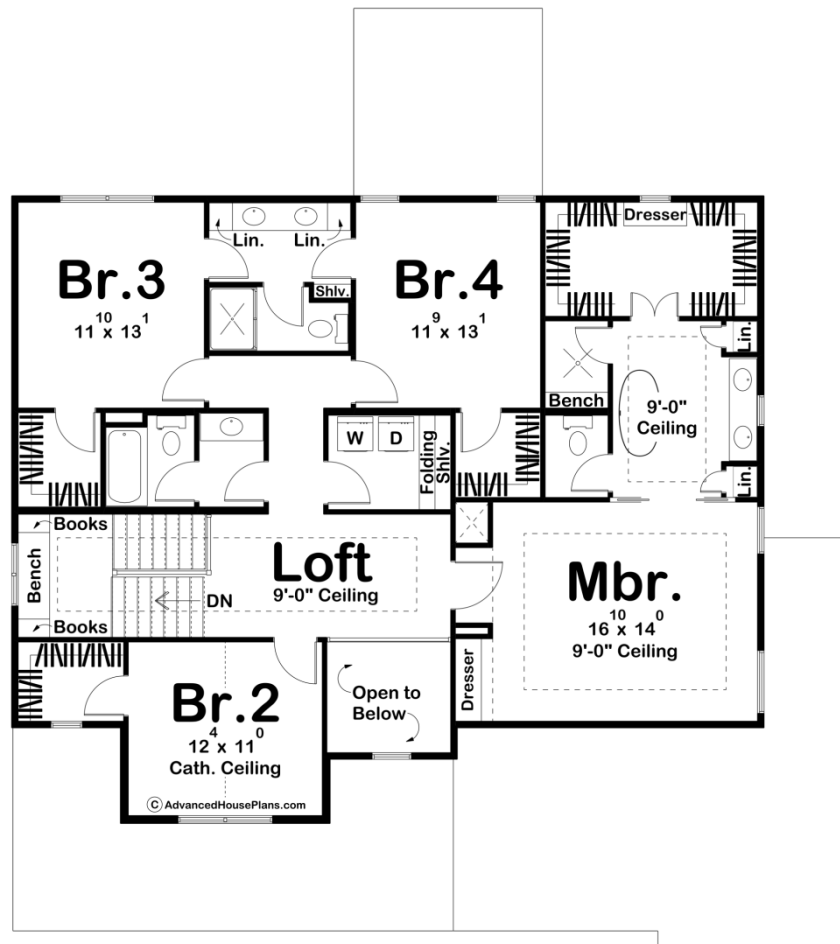




30141 - Darlington Data Sheet

2990 SQ FT	4 BEDS	4 BATHS	2 BAYS	53' 0" WIDE	59' 8" DEEP
---------------	-----------	------------	-----------	----------------	----------------





## Construction Specs

### Layout

Bedrooms	4
Bathrooms	4
Garage Bays	2

### Square Footage

Main Level	1445 Sq. Ft.
Second Level	1545 Sq. Ft.
Covered Area	451 Sq. Ft.
Garage	613 Sq. Ft.
Total Finished Area	2990 Sq. Ft.

### Exterior Dimensions

Width	53' 0"
Depth	59' 8"

### Default Construction Stats

*Stats are unique to the individual plan.*

Foundation Type	Basement
Exterior Wall Construction	2x4
Roof Pitches	8/12 Primary, 10/12 4/12 Secondary
Foundation Wall Height	9'
Main Wall Height	9'
Second Wall Height	8'

## Plan Description

The Darlington plan is a wonderful, traditional-style house plan. The exterior combines siding with stone to create a beautiful facade. A large front covered porch greets guests into the home. Just inside the home, you'll find yourself in a 2 story entryway. Just to the left of the entry is an amazing home office, which is a must for those who work from home. Further inside the home, the main living space is arranged in a beautiful open layout. The great room is warmed by a fireplace that has a built-in shelf to the left, and a seat to the right. The U-shaped kitchen includes a large island with a snack bar and a walk-in pantry. A door leads from the kitchen/dining area to the rear covered patio. Upstairs, you'll find 4 bedrooms including the amazing master suite. The master bedroom lies under a trayed ceiling and has a built-in dresser. The master bathroom includes a soaking tub, his/her vanities, and a large walk-in closet. Every bedroom has its own walk-in closet. Bedrooms 3 and 4 share a jack and jill bathroom. Back on the main level, the home's side-load 2-car garage accesses the home through a convenient mud room that includes a coat closet and a bench and lockers.