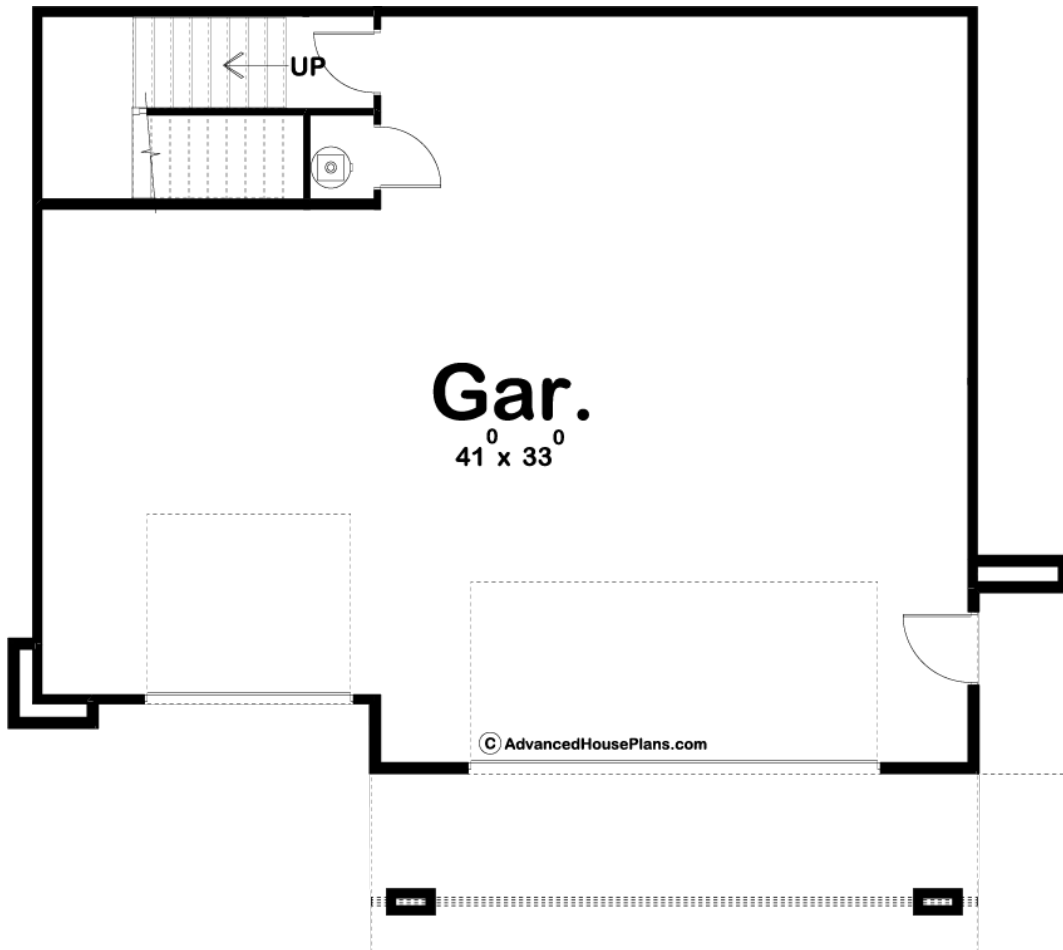
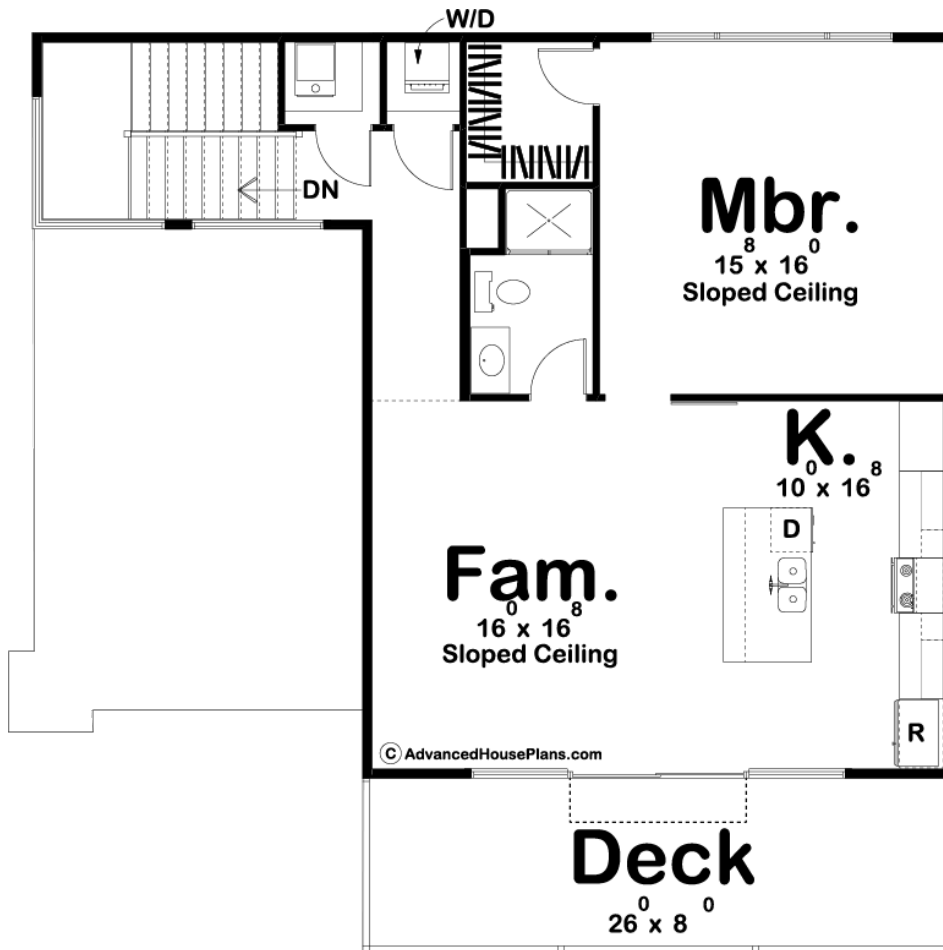




29744 - Cortland Data Sheet

932 SQ FT	1 BEDS	1 BATHS	3 BAYS	47' 0" WIDE	40' 0" DEEP
--------------	-----------	------------	-----------	----------------	----------------





Construction Specs

Layout

Bedrooms	1
Bathrooms	1
Garage Bays	3

Square Footage

Main Level	932 Sq. Ft.
Garage	1358 Sq. Ft.
Total Finished Area	932 Sq. Ft.

Exterior Dimensions

Width	47' 0"
Depth	40' 0"

Default Construction Stats

Stats are unique to the individual plan.

Foundation Type	Slab
Exterior Wall Construction	2x4

Roof Pitches	1/12 Primary
Main Wall Height	10'
Second Wall Height	9'

Plan Description

Modern styling, metal roof, thinset stone veneer, and cedar siding help set this 3 car apartment garage apart from its competition. On the lower level you will find a generously sized 3 car garage with enough room for a workshop. Upstairs you will find a perfectly situated 1 bedroom apartment. The first thing you will notice in this apartment is the wonderful open flow of the kitchen and family room under a beautiful sloped ceiling. The kitchen includes an island with a flush snack bar and a pantry. A large master bedroom with a walk-in closet shares a bathroom with the main living space.