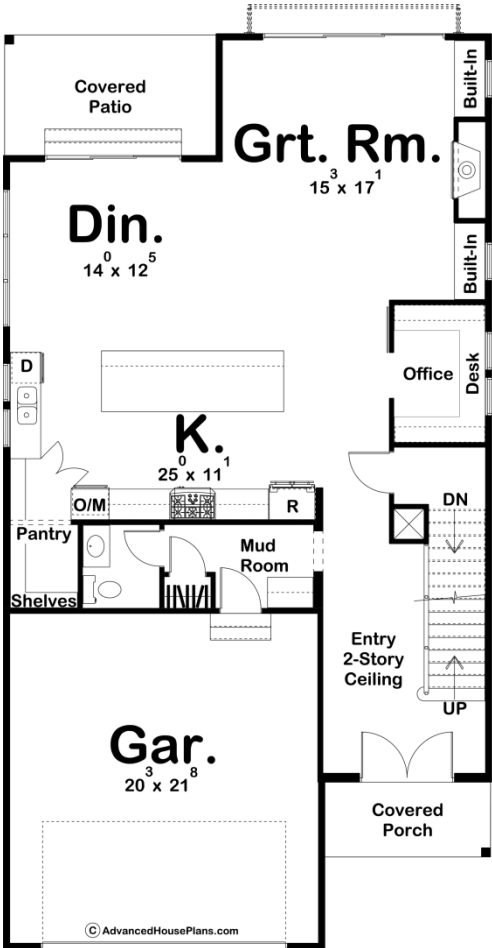
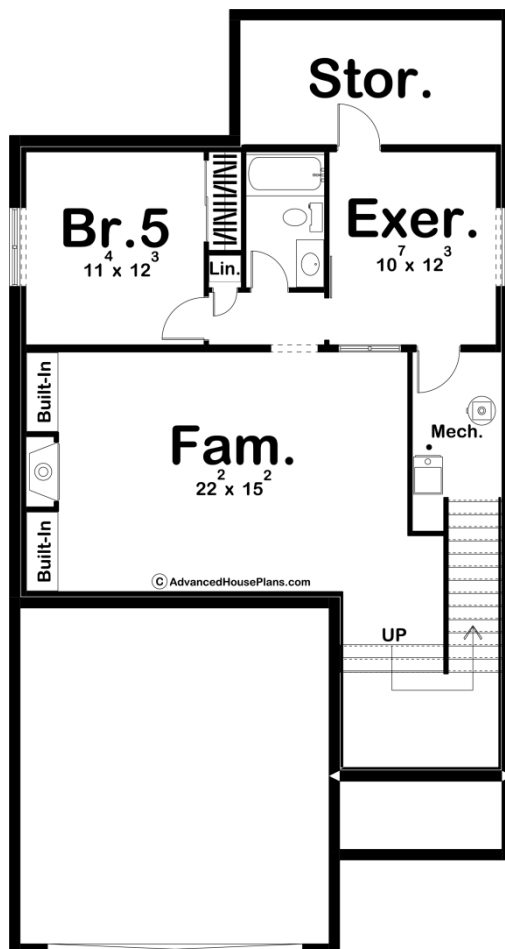
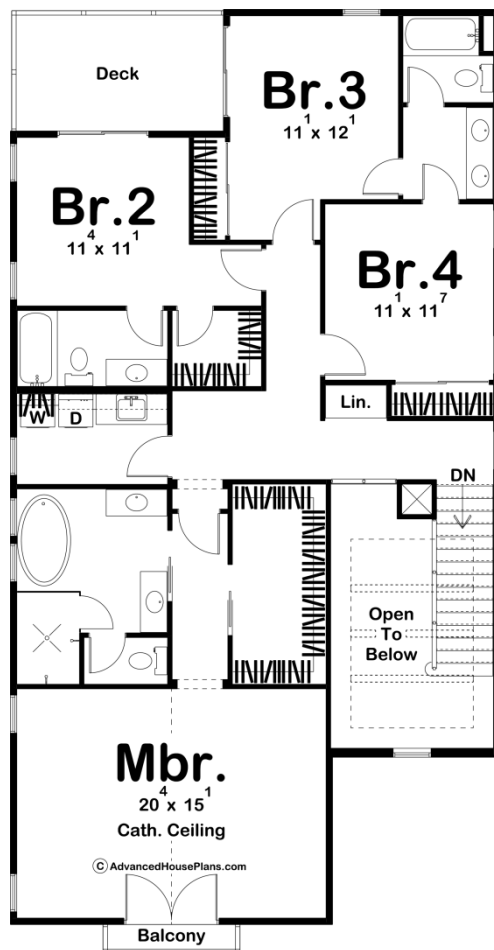




29845 - Coronado Data Sheet

2731 SQ FT	4 BEDS	4 BATHS	2 BAYS	32' 0" WIDE	60' 0" DEEP
---------------	-----------	------------	-----------	----------------	----------------





Construction Specs

Layout	
Bedrooms	4
Bathrooms	4
Garage Bays	2
Square Footage	
Main Level	1229 Sq. Ft.
Second Level	1502 Sq. Ft.
Garage	457 Sq. Ft.
Total Finished Area	2731 Sq. Ft.
Exterior Dimensions	
Width	32' 0"
Depth	60' 0"
Default Construction Stats	
<i>Stats are unique to the individual plan.</i>	
Foundation Type	Basement
Exterior Wall Construction	2x4
Roof Pitches	4/12 Primary
Foundation Wall Height	9'
Main Wall Height	9'
Second Wall Height	8'

Plan Description

The Coronado plan is a stunning Modern style home that showcases single pitched rooflines and cedar accents. The exterior of the home is sure to turn heads with its excellent curb appeal. As soon as you step into this home, you'll be impressed with this well thought out floor plan. An entry with a 2 story ceiling greets you as soon as you step in the front door. Further, into the home, the dining room, great room, and kitchen all flow perfectly together. The kitchen includes a large island with a snack bar and a large walk-in pantry. The great room is warmed by a fireplace that is flanked by built-in bookshelves and accesses the rear of the home through a triple sliding glass door. Upstairs, you'll find all 4 bedrooms. The master suite includes his/her vanities, a walk-in closet, a soaking tub, and an enclosed toilet area. Bedroom 2 has access to its own bathroom while bedroom 3 and 4 share a convenient bathroom. An optional finished basement adds 861 sq ft to the plan and comes loaded with great features including an additional family room, an exercise room, and an additional bedroom and bathroom.