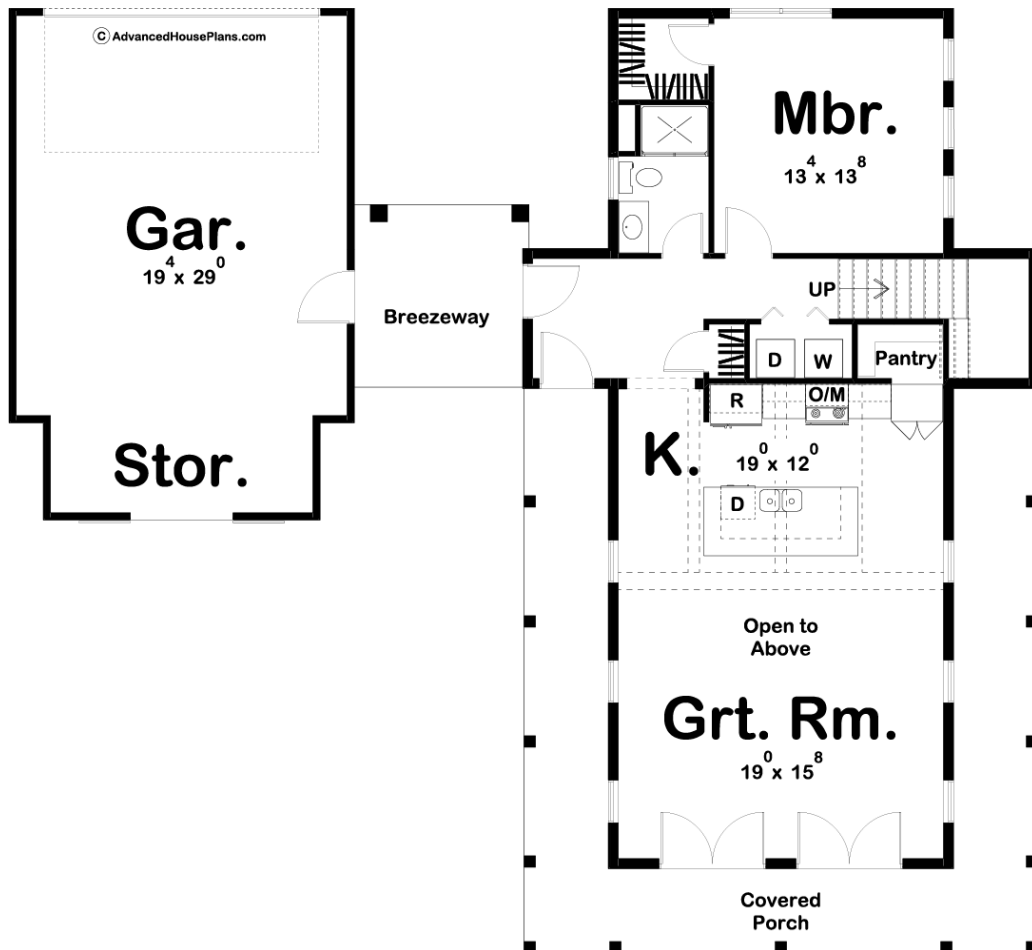
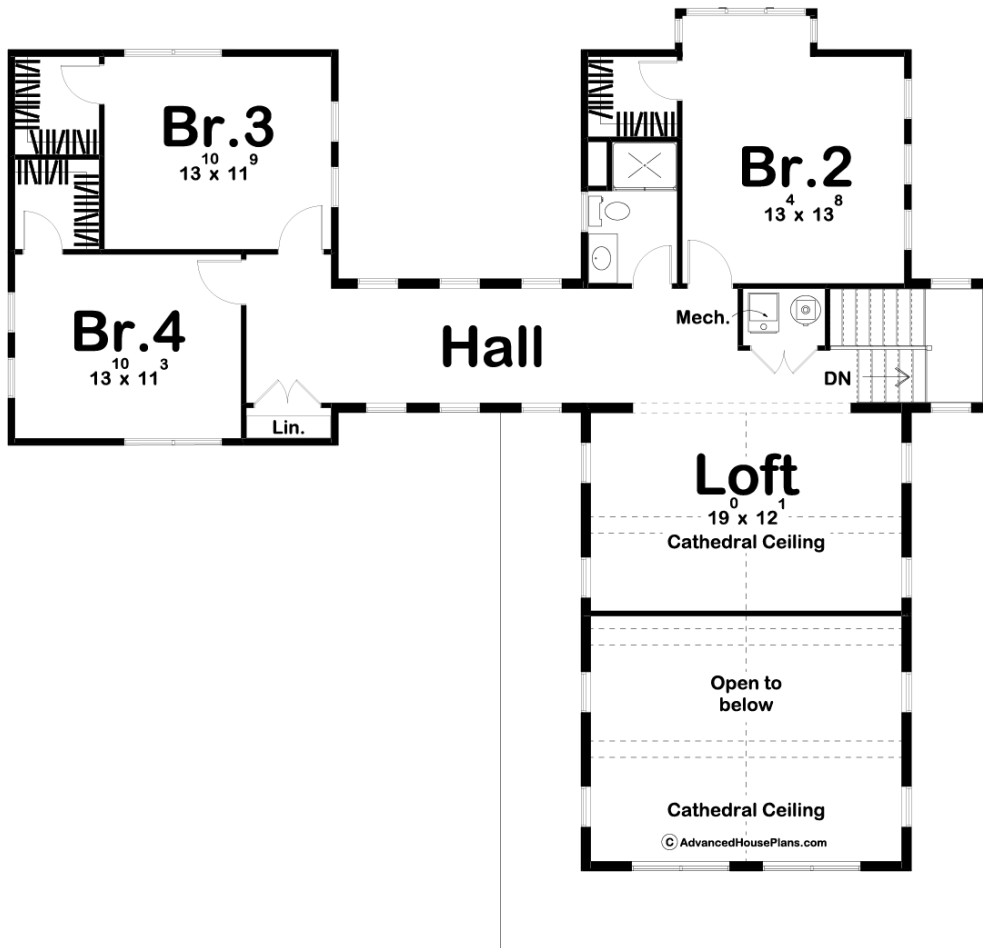




**29731 - Clearwater Data Sheet**

2391 SQ FT	4 BEDS	2 BATHS	2 BAYS	60' 0" WIDE	55' 0" DEEP
---------------	-----------	------------	-----------	----------------	----------------





## Construction Specs

### Layout

Bedrooms	4
Bathrooms	2
Garage Bays	2

### Square Footage

Main Level	1080 Sq. Ft.
Second Level	1311 Sq. Ft.
Garage	691 Sq. Ft.
Total Finished Area	2391 Sq. Ft.

### Exterior Dimensions

Width	60' 0"
Depth	55' 0"

### Default Construction Stats

*Stats are unique to the individual plan.*

Foundation Type	Slab
-----------------	------

Exterior Wall Construction	2x4
Roof Pitches	10/12 Primary, 6/12 Secondary
Main Wall Height	9'
Second Wall Height	8'

## Plan Description

This 1.5-story, Modern Farmhouse lake house plan is highlighted by a detached 2 car garage with breezeway and wrap around rear porch. Inside, immediate impressions are made by a soaring 2-story-high, cathedral ceiling in the great room. A trio of tall windows complement both side walls of the great room and the rear wall offers 2 sets of French doors, offering views to the wrap around porch. The kitchen, with expansive work island, lies beneath its own beamed ceiling and is open to the great room. Away from the living areas, the main floor's bedroom features a walk-in closet. Upstairs, Bedrooms 2, 3 and 4 each enjoy its own walk-in closet and shares a hall bath. An open bunk loft that overlooks the great room compliments this one of a kind lake house.