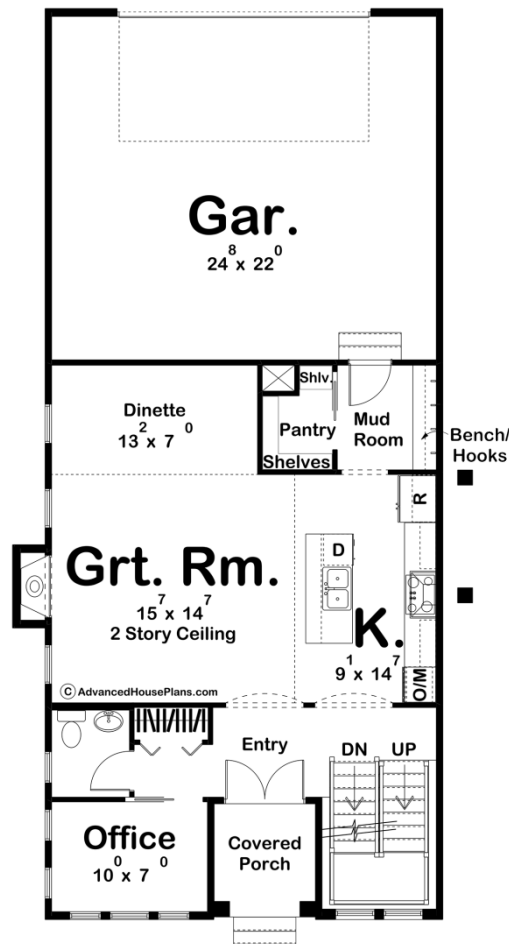
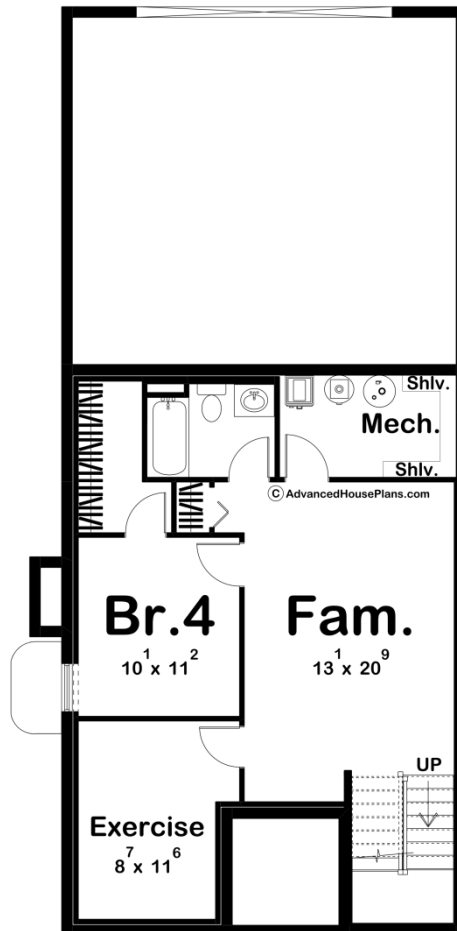
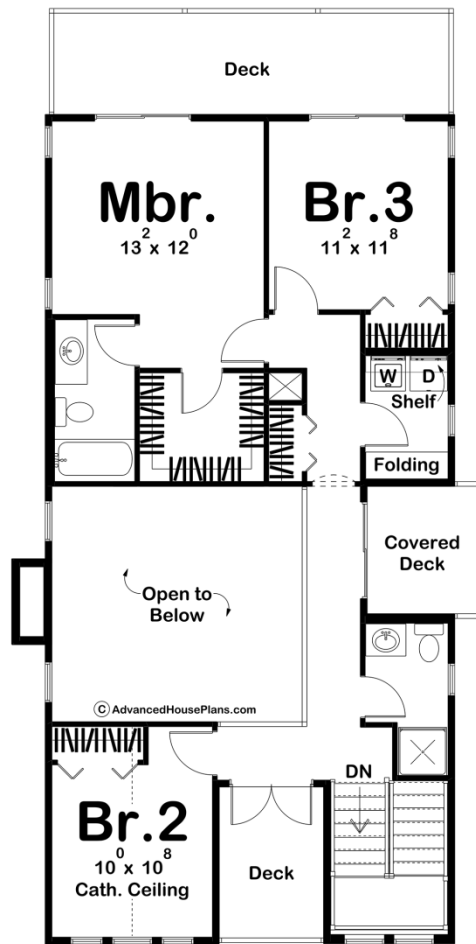




29941 - Cara Data Sheet

1723 SQ FT	3 BEDS	3 BATHS	2 BAYS	30' 0" WIDE	58' 0" DEEP
---------------	-----------	------------	-----------	----------------	----------------





Construction Specs

Layout	
Bedrooms	3
Bathrooms	3
Garage Bays	2
Square Footage	
Main Level	843 Sq. Ft.
Second Level	880 Sq. Ft.
Covered Area	49 Sq. Ft.
Garage	572 Sq. Ft.
Total Finished Area	1723 Sq. Ft.
Exterior Dimensions	
Width	30' 0"
Depth	58' 0"
Ridge Height	27'
<i>Calculated from main floor line</i>	
Default Construction Stats	
<i>Stats are unique to the individual plan.</i>	
Foundation Type	Basement
Exterior Wall Construction	2x4
Roof Pitches	4/12 Primary, 12/12 Secondary
Foundation Wall Height	9'
Main Wall Height	9'
Second Wall Height	9'

Plan Description

The Cara plan is an elegant Modern Cottage style house plan. At just under 30' wide, this plan is a great fit for more narrow lots. The exterior of the home showcases stucco with brick and features lots of windows. Just inside the entry, you'll find a wonderful office to the left along with a powder bathroom. The great room, dinette, and kitchen flow seamlessly in an open layout. The great room is warmed by a cozy fireplace. The kitchen includes a large working island with a snack bar and a walk-in pantry. On the second level, you'll find 3 bedrooms. The master suite includes its own bathroom and a large walk-in closet. Bedrooms 2 and 3 share a centrally located hall bathroom. Back on the main level, the home's 2 car rear load garage accesses the home through a mudroom with a bench and coat hooks. An optional finished basement adds 706 sq. ft. and includes a family room, an exercise room, and an additional bedroom with a walk-in closet.