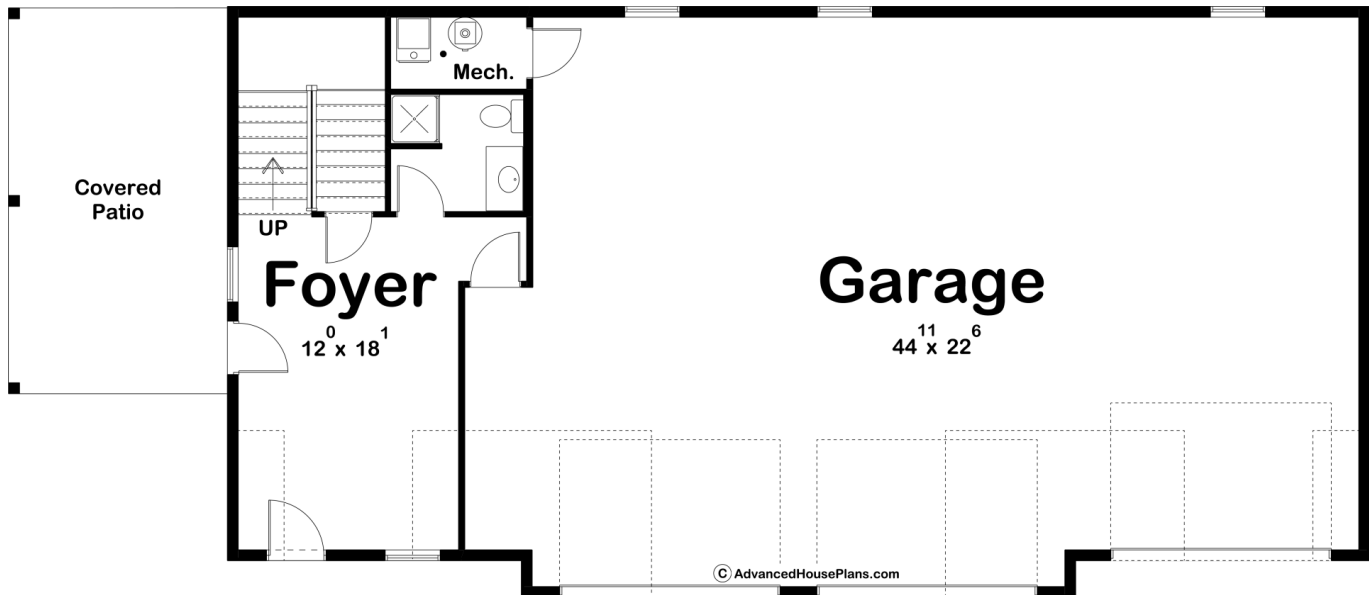


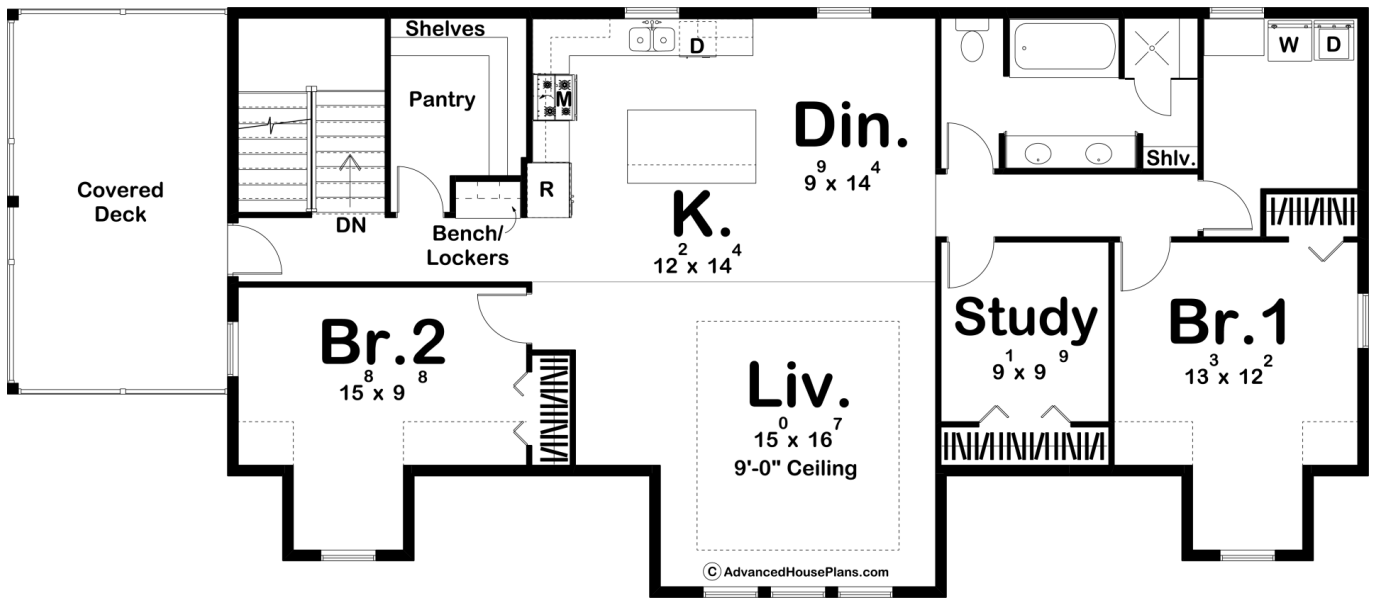
ADVANCED
HOUSE PLANS



29897 - Burwell Data Sheet

2176 SQ FT	2 BEDS	2 BATHS	3 BAYS	74' 0" WIDE	32' 0" DEEP
---------------	-----------	------------	-----------	----------------	----------------





Construction Specs

Layout

Bedrooms	2
Bathrooms	2
Garage Bays	3

Square Footage

Main Level	398 Sq. Ft.
Second Level	1778 Sq. Ft.
Total Finished Area	2176 Sq. Ft.

Exterior Dimensions

Width	74' 0"
Depth	32' 0"

Default Construction Stats

Stats are unique to the individual plan.

Foundation Type	Slab
Exterior Wall Construction	2x6

Roof Pitches	12/12 Primary, 6/12 Secondary
Main Wall Height	9'
Second Wall Height	8'

Plan Description

The Burwell is a stunning traditional style carriage house that features a large 2 bedroom apartment above a 3 car garage. The lower level includes 3 single car bays and a large foyer with a bathroom. Upstairs, you'll find a wonderful 2 bedroom apartment. The full kitchen includes a large kitchen island and a massive walk-in pantry. The kitchen, dining room, and living room flow seamlessly together in an open layout.