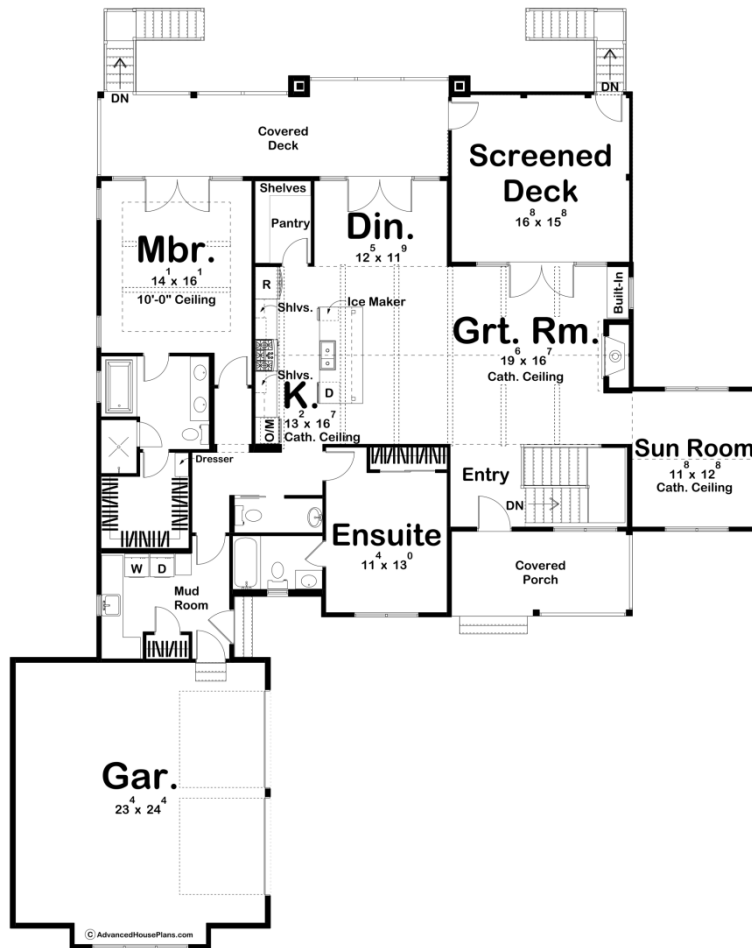
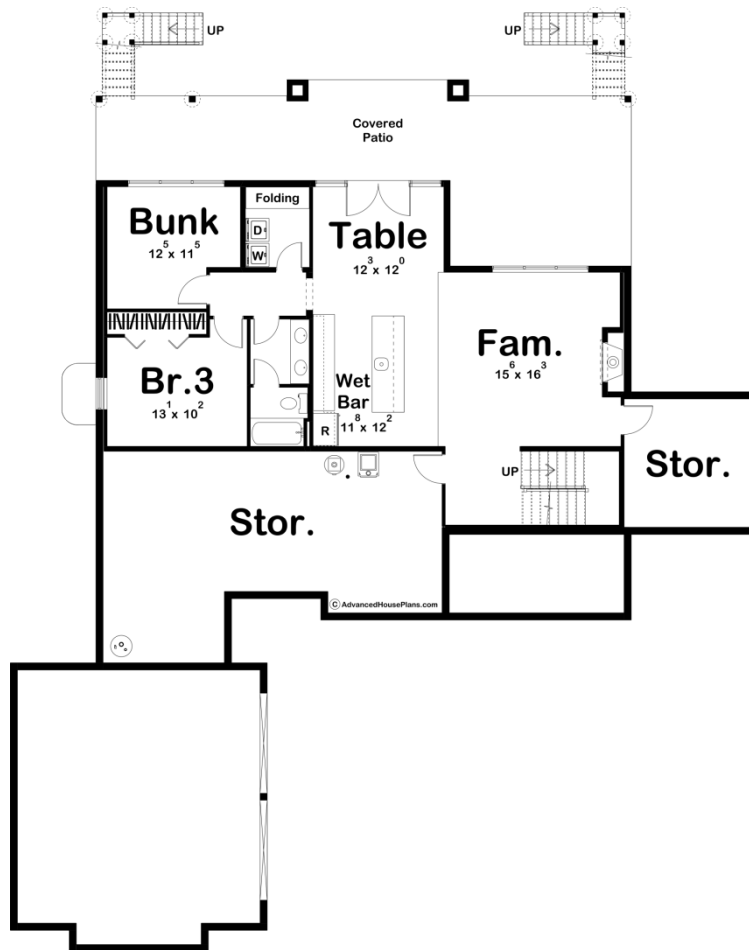




30108 - Bull Lake Data Sheet

| | | | | | |
|---------------|-----------|------------|-----------|----------------|----------------|
| 1954 SQ FT | 2 BEDS | 3 BATHS | 2 BAYS | 70' 0" WIDE | 88' 0" DEEP |
|---------------|-----------|------------|-----------|----------------|----------------|





Construction Specs

Layout

| | |
|-------------|---|
| Bedrooms | 2 |
| Bathrooms | 3 |
| Garage Bays | 2 |

Square Footage

| | |
|---------------------|--------------|
| Main Level | 1954 Sq. Ft. |
| Covered Area | 681 Sq. Ft. |
| Garage | 642 Sq. Ft. |
| Total Finished Area | 1954 Sq. Ft. |

Exterior Dimensions

| | |
|--|--------|
| Width | 70' 0" |
| Depth | 88' 0" |
| Ridge Height | 22' |
| <i>Calculated from main floor line</i> | |

Default Construction Stats

Stats are unique to the individual plan.

| | |
|----------------------------|-------------------------------|
| Foundation Type | Walkout |
| Exterior Wall Construction | 2x4 |
| Roof Pitches | 6/12 Primary, 10/12 Secondary |
| Foundation Wall Height | 9' |
| Main Wall Height | 9' |

Plan Description

This stunning lake house has everything you need to get the most out of the lake living lifestyle. The charming exterior textures of stone and shake siding give this home great curb appeal. Once you step inside the home, you will be blown away by the large great room that lies under a cathedral ceiling with exposed wood beams. Adjacent to the great room you will find the kitchen and dining area. The kitchen includes a walk-in pantry and a kitchen island with a snack bar. The master suite includes a large master bath with his/her vanities, a soaking tub, and a walk-in closet. There is also an ensuite on the main level with access to a private bathroom. If you are looking for outdoor entertainment space, the Bull Lake plan has you covered. There is a beautiful screened deck off the great room that makes for a great place to take in the lake views. To the right of the entry way there is an amazing sun room. A rear covered deck is accessible from the dining or the master bedroom. A 2 car garage accesses the home through a convenient mudroom. An optional finished basement adds 1030 sq ft and includes a table room, a wet bar, a family room, a bunk room, an additional bedroom, and laundry room.