

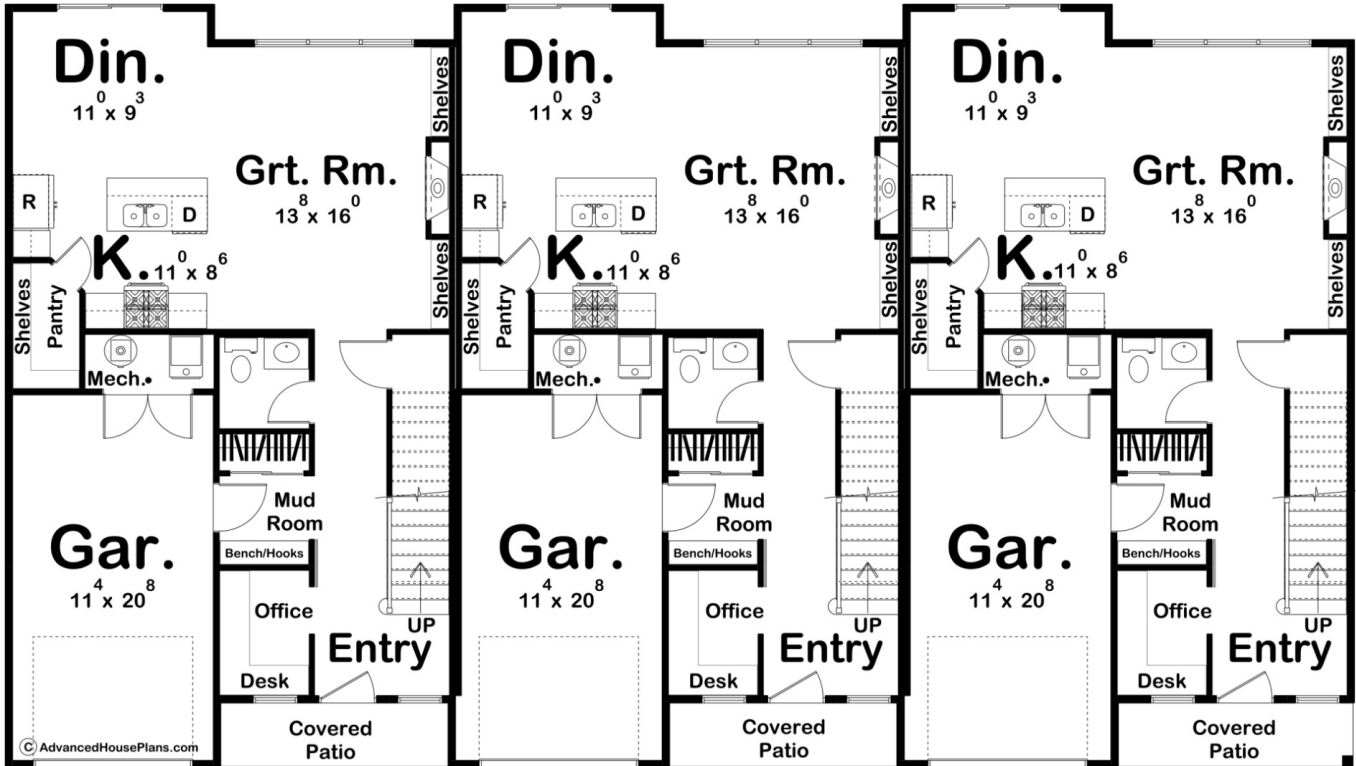
# ADVANCED

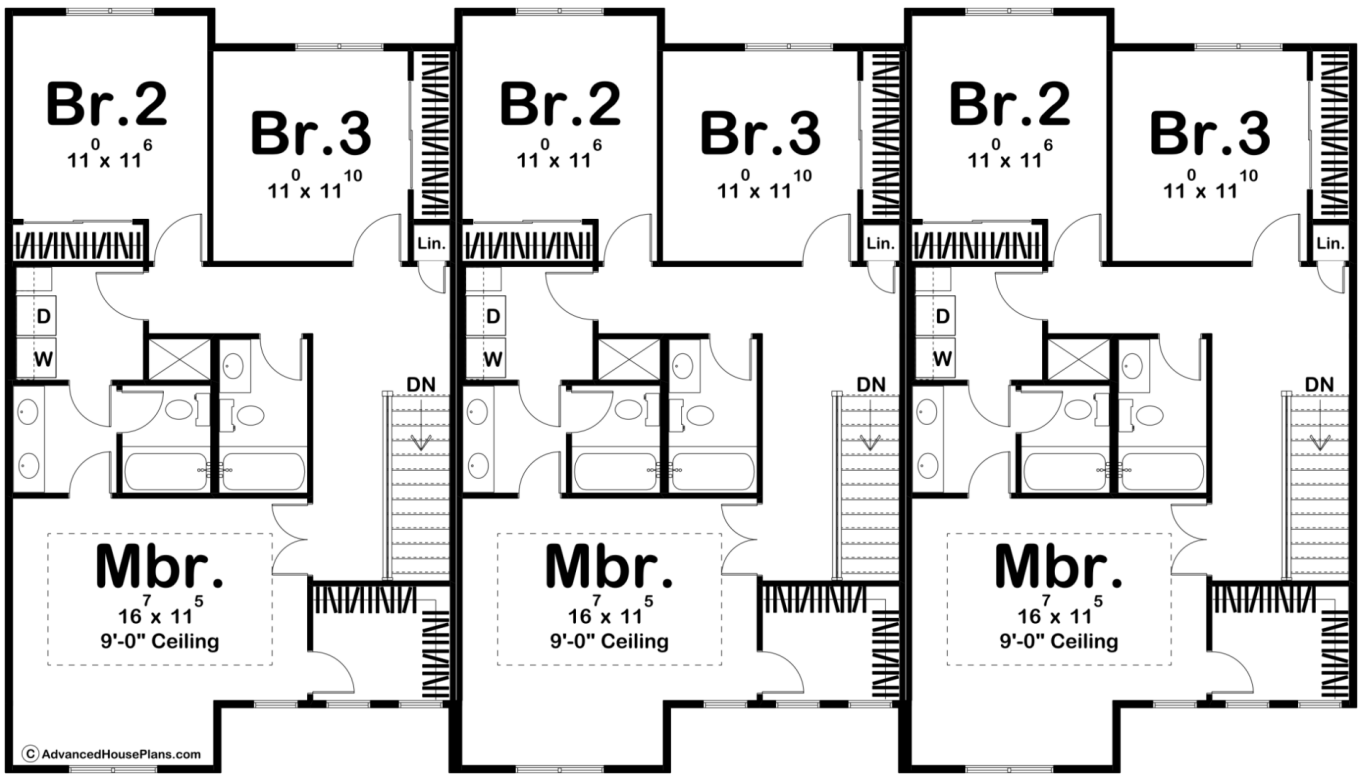
HOUSE PLANS



## 30303 - Brookfield Data Sheet

1711 SQ FT	3 BEDS	3 BATHS	1 BAYS	76' 0" WIDE	43' 0" DEEP
---------------	-----------	------------	-----------	----------------	----------------





## Construction Specs

Layout	
Bedrooms	3
Bathrooms	3
Garage Bays	1
Square Footage	
Main Level	744 Sq. Ft.
Second Level	967 Sq. Ft.
Covered Area	49 Sq. Ft.
Garage	247 Sq. Ft.
Total Finished Area	1711 Sq. Ft.
Exterior Dimensions	
Width	76' 0"
Depth	43' 0"
Default Construction Stats	
<i>Stats are unique to the individual plan.</i>	

Foundation Type	Slab
Exterior Wall Construction	2x4
Roof Pitches	Primary 6/12, Secondary 10/12
Main Wall Height	9'
Second Wall Height	8'

## Plan Description

Our Brookfield plan is a triplex of our Fleetwood. It's a gorgeous modern farmhouse plan with 1711 square feet, 3 bedrooms, and 3 bathrooms. The exterior of this home with board and batten siding, wood accents, metal roofing, and dark windows gives this plan a traditional modern farmhouse feel with uniqueness still throughout. Walking in through the front door just under the covered patio walks you straight into a gorgeous entryway, met with a lovely staircase on the right or office space with a built-in desk on the left. A mudroom with access to the 1-car garage can also be found here, also including a built-in bench with hooks for coats and bags. Continuing throughout the house is when you will find a powder bath, just before stepping into a spacious open concept room, containing the great room with built-in shelving and a fireplace, a dining room, and a kitchen with a walk-in pantry and large kitchen island. Heading upstairs is where all of the bedrooms can be found. The master is complete with a 9' ceiling, walk-in closet, private Hollywood bath with a double vanity, and access to the laundry room. Bedrooms 2 and 3 can also be found here, which share a hallway bath. We also have a Duplex version (Wood Valley) and a Quadplex version (Millsdale).