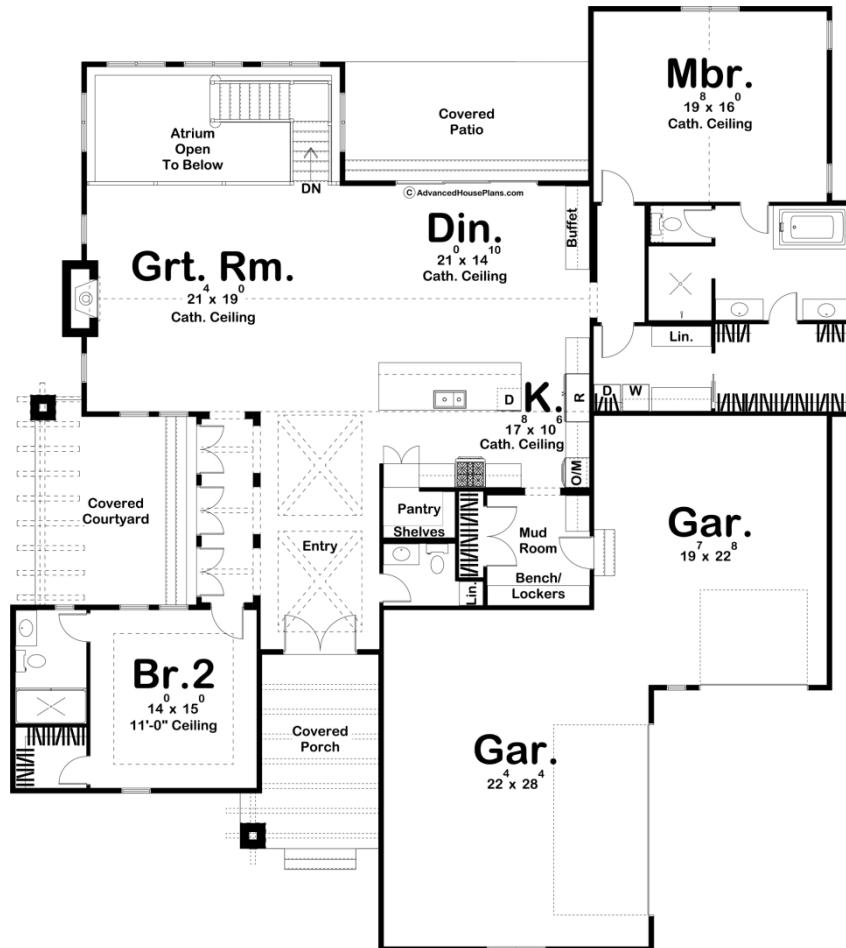
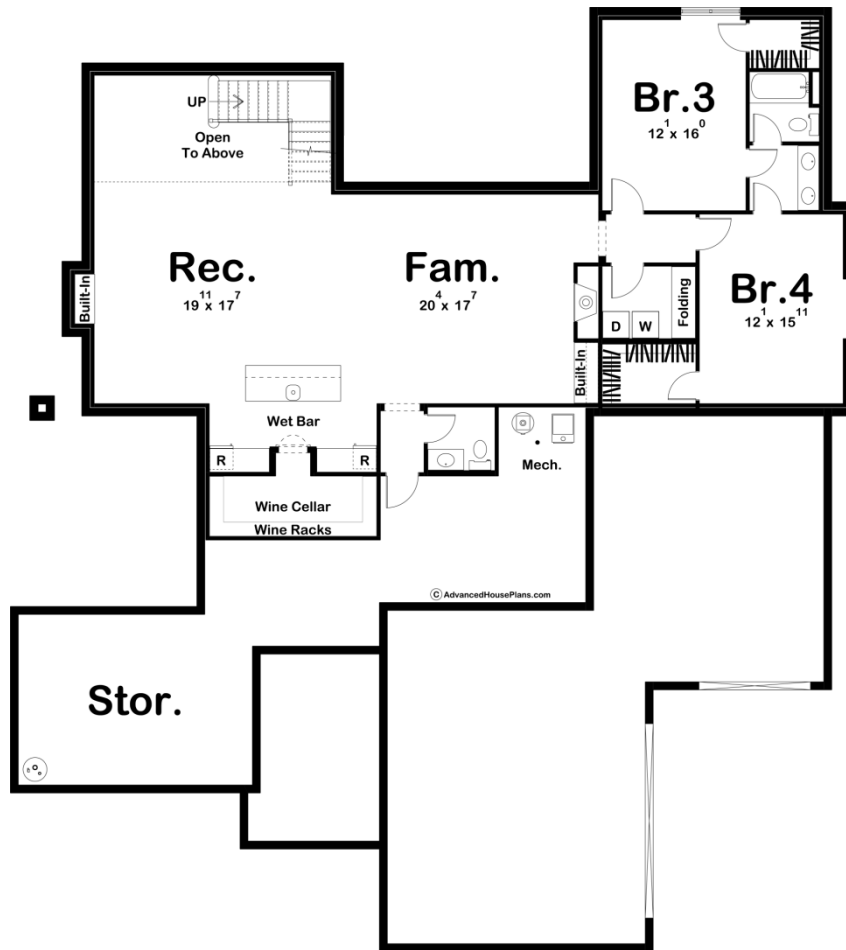




29928 - Broadmoor Data Sheet

2546 SQ FT	2 BEDS	3 BATHS	3 BAYS	71' 0" WIDE	80' 0" DEEP
---------------	-----------	------------	-----------	----------------	----------------





Construction Specs

Layout

Bedrooms	2
Bathrooms	3
Garage Bays	3

Square Footage

Main Level	2546 Sq. Ft.
Garage	1084 Sq. Ft.
Total Finished Area	2546 Sq. Ft.

Exterior Dimensions

Width	71' 0"
Depth	80' 0"

Default Construction Stats

Stats are unique to the individual plan.

Foundation Type	Basement
Exterior Wall Construction	2x4

Roof Pitches	6/12 Primary, 12/12 Secondary
Foundation Wall Height	9'
Main Wall Height	10'

Plan Description

The Broadmoor is an ultra-modern farmhouse plan. White stucco provides a stark contrast with the black metal roof with zero overhangs. Three separate outdoor spaces make this home perfect for outdoor entertainment. On the front of the house, there is a large covered porch under a built-in pergola. On the side of the house, you'll find a large covered courtyard with its own pergola. On the rear of the house, you'll find a large covered patio that is perfect for grilling. One step inside the home, you'll be blown away by the large entry with its exposed beams. The great room and dining room flow in an open floor plan and lie under a soaring cathedral ceiling. The home's beautiful kitchen includes a large walk-in pantry and a large island. An atrium off the rear of the living room leads down to the optional finished basement. The master suite lies under its own cathedral ceiling and includes a soaking tub, his/her vanities, and a large walk-in closet with laundry room access. A second bedroom on the main floor has access to its own bathroom. An optional finished basement can add 1878 sq ft to the home and includes 2 additional bedrooms, a family room, a rec area, and a stunning wet bar with a wine cellar.