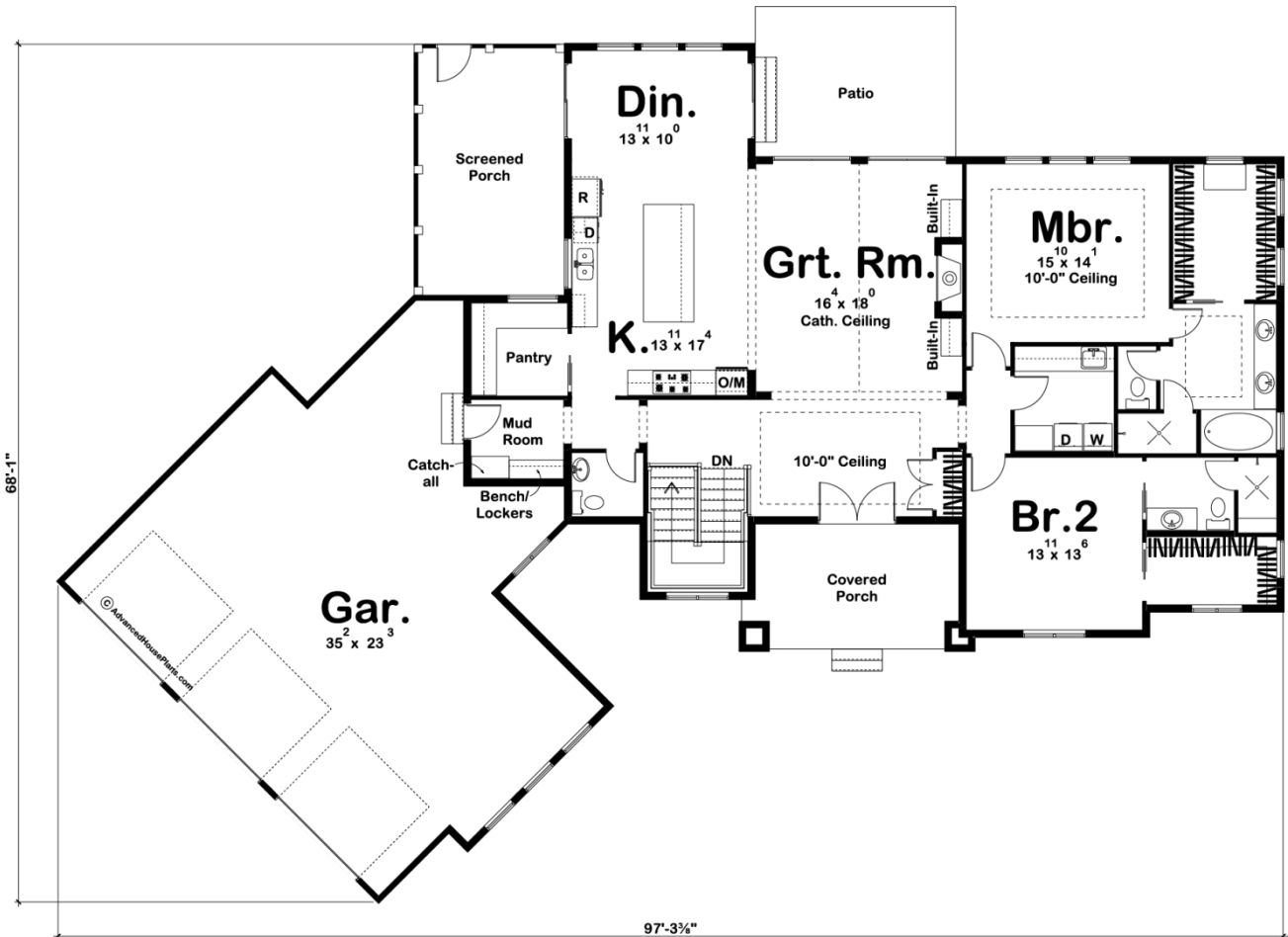




## 29409 - Bridgetown Data Sheet

2172 SQ FT	2 BEDS	3 BATHS	3 BAYS	98' 0" WIDE	69' 0" DEEP
---------------	-----------	------------	-----------	----------------	----------------



## Construction Specs

Layout

Bedrooms

Bathrooms	3
Garage Bays	3
<b>Square Footage</b>	
Main Level	2172 Sq. Ft.
Garage	1095 Sq. Ft.
Total Finished Area	2172 Sq. Ft.
<b>Exterior Dimensions</b>	
Width	98' 0"
Depth	69' 0"
Ridge Height	24'
<i>Calculated from main floor line</i>	
<b>Default Construction Stats</b>	
<i>Stats are unique to the individual plan.</i>	
Foundation Type	Basement
Exterior Wall Construction	2x4
Roof Pitches	8/12 Primary 10/12, Secondary
Foundation Wall Height	9'
Main Wall Height	9'

## Plan Description

Classic Craftsman styling and an angled footprint contribute to this 1-story house plan's outstanding curb appeal. Double doors within a deep covered front porch open to an entry hall with 10-foot-high ceilings and coat closet. Straight ahead, the great room, residing beneath a cathedral ceiling, showcases a fireplace flanked by built-in book/display cases. This home plans kitchen and dining area openly interact with the great room for easy entertaining. The kitchen features a large island work area and a roomy walk-in pantry. Entertaining options are expanded by the adjacent dining area, which accesses both a rear patio and a screened porch. Just off the kitchen, a mudroom with built-in bench, lockers, and catch-all access the home's angled 3-car garage. Additional space in the garage awaits use as a work area or for storage. On the opposite side of the home, the master suite features a well-appointed bath area that includes dual sinks, soaking tub, walk-in shower, compartmented toilet and roomy walk-in closet. A nearby secondary bedroom with private bath and walk-in closet is separated from the master bedroom by the laundry room. This bedroom could easily be utilized and appreciated as a guest suite or in-law suite. As always any Advanced House Plans home plan can be customized to fit your needs with our alteration department. Whether you need to add another garage stall, change the front elevation, stretch the home larger or just make the home plan more affordable for your budget we can do that and more for you at Ahp.