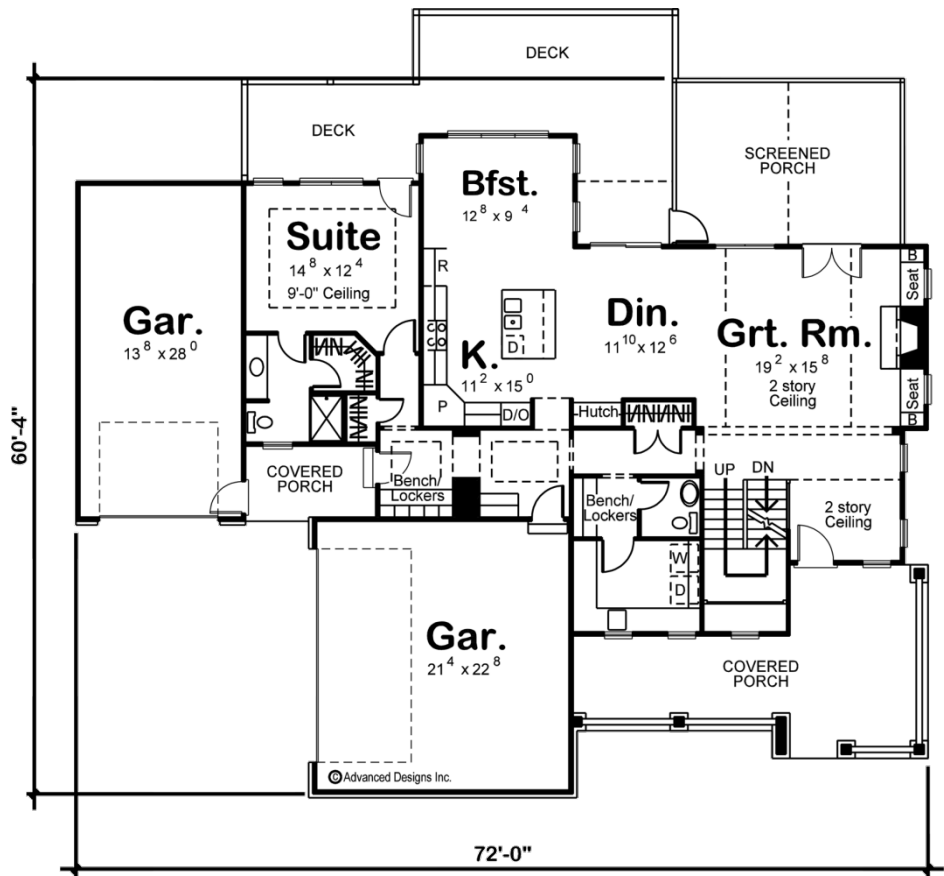


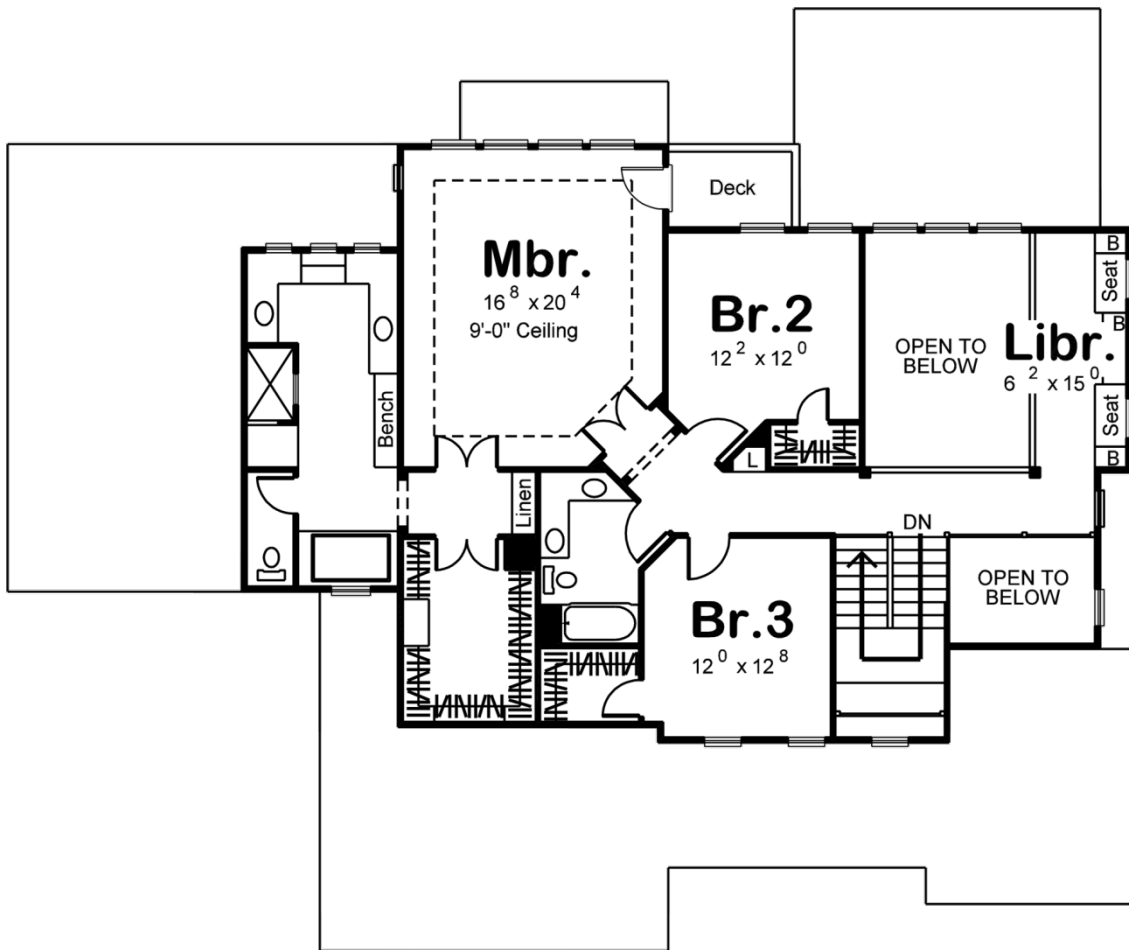


29196 - Brekinridge Data Sheet

3114 SQ FT	3 BEDS	4 BATHS	2 BAYS	72' 0" WIDE	61' 0" DEEP
---------------	-----------	------------	-----------	----------------	----------------



29196
Brekinridge
M.L. 1690[^]
S.L. 1424[^]
Total 3114[^]



Construction Specs

Layout

Bedrooms	3
Bathrooms	4
Garage Bays	2

Square Footage

Main Level	1690 Sq. Ft.
Second Level	1424 Sq. Ft.
Garage	920 Sq. Ft.
Total Finished Area	3114 Sq. Ft.

Exterior Dimensions

Width	72' 0"
Depth	61' 0"

Default Construction Stats

Stats are unique to the individual plan.

Foundation Type	Basement
-----------------	----------

Exterior Wall Construction	2x4
Foundation Wall Height	9'
Main Wall Height	9'
Second Wall Height	8'

Plan Description

A seemingly endless array of enticing amenities are found in this 2-story, Craftsman-style house plan. A deep, covered front porch greets guests, who upon entering the home, are treated to views of the great room from a two-story-high entry hall. The great room captivates its occupants with a fireplace that is flanked by built-in seats and bookshelves, a soaring two-story-high ceiling and direct access to a screened porch that expands entertaining options to the outside. A rear deck is accessed from the dining area for outdoor dining or simply relaxing. The kitchen, with breakfast island workspace and walk-in pantry, accesses a fabulously practical utility area that includes a mudroom with bench and lockers, a powder bath -- adjacent to additional benches and lockers -- and a generously sized laundry with ample counter space and soaking sink. Adjacent to the kitchen is a "mother-in-law suite" with its own entrance from a covered porch. This private suite accesses the rear deck, and includes a bath with shower and walk-in closet. Flanking the suite's covered porch are two garage areas -- a single-car garage to the side and a two-car garage to the front. On the second level, a sprawling master suite with its own private deck, features a large walk-in closet, linen closet and pampering bath with his and her vanities, shower, soaking tub and shower. Bedrooms 2 and 3 share a centrally located hall bath with dual sinks. A few steps down the hall lead to the library with built-in window seats and views to the great room below.