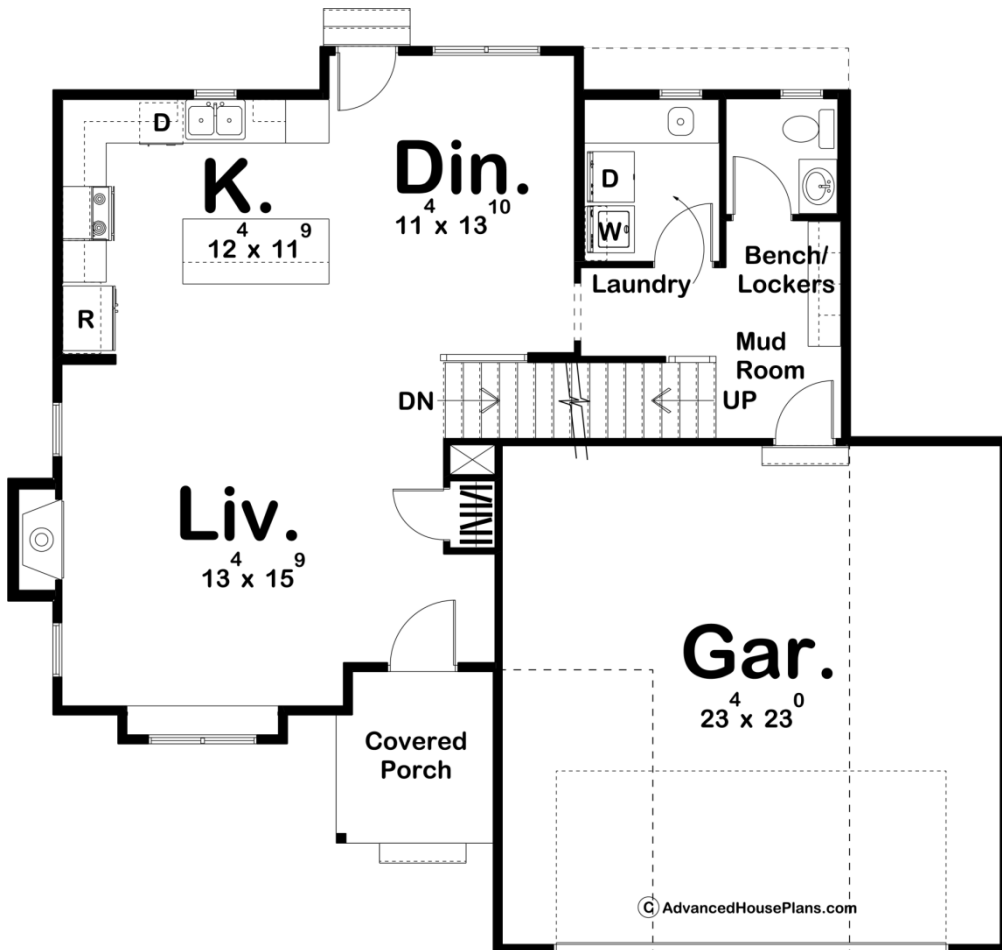
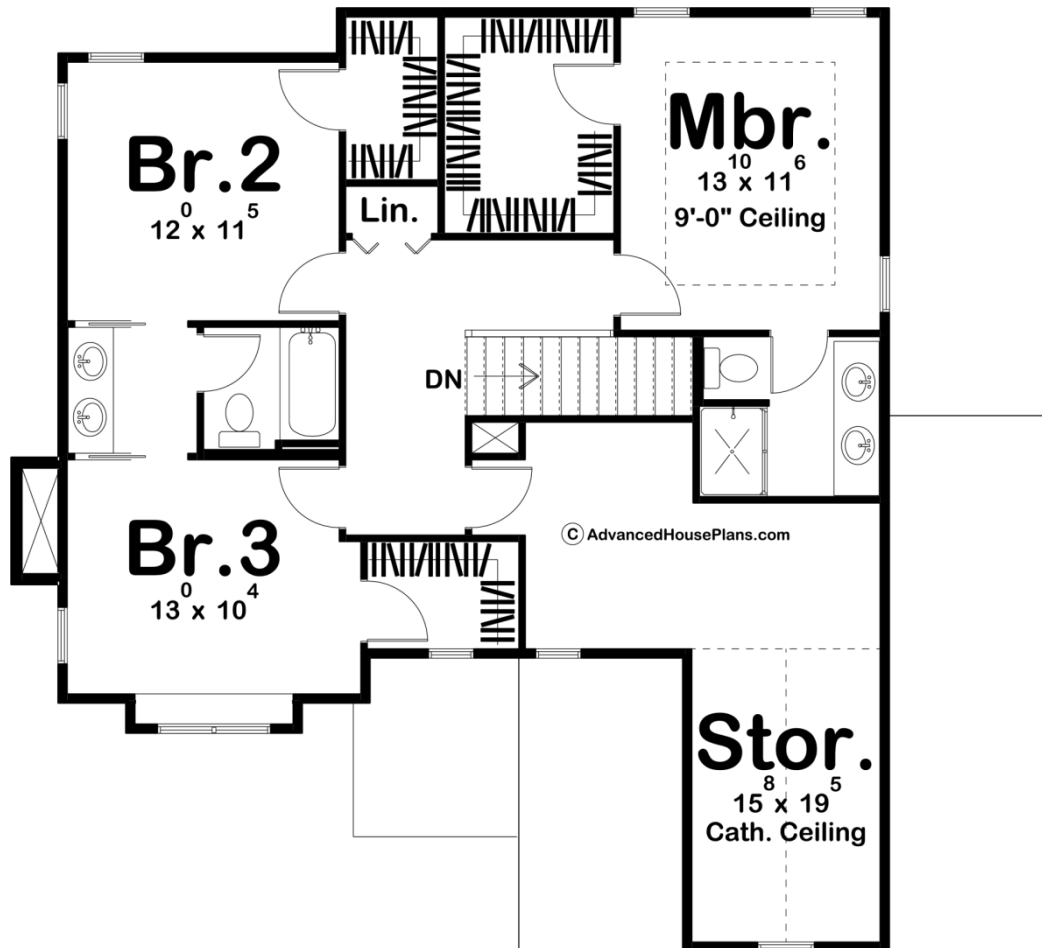




**29703 - Bradley Farms Data Sheet**

|               |           |            |           |                |                |
|---------------|-----------|------------|-----------|----------------|----------------|
| 1753<br>SQ FT | 3<br>BEDS | 3<br>BATHS | 2<br>BAYS | 46' 0"<br>WIDE | 41' 8"<br>DEEP |
|---------------|-----------|------------|-----------|----------------|----------------|





## Construction Specs

### Layout

|             |   |
|-------------|---|
| Bedrooms    | 3 |
| Bathrooms   | 3 |
| Garage Bays | 2 |

### Square Footage

|                     |              |
|---------------------|--------------|
| Main Level          | 885 Sq. Ft.  |
| Second Level        | 868 Sq. Ft.  |
| Garage              | 557 Sq. Ft.  |
| Total Finished Area | 1753 Sq. Ft. |

### Exterior Dimensions

|       |        |
|-------|--------|
| Width | 46' 0" |
| Depth | 41' 8" |

### Default Construction Stats

*Stats are unique to the individual plan.*

|                 |          |
|-----------------|----------|
| Foundation Type | Basement |
|-----------------|----------|

|                            |                                   |
|----------------------------|-----------------------------------|
| Exterior Wall Construction | 2x4                               |
| Roof Pitches               | 6/12 Primary, 6/12 4/12 Secondary |
| Foundation Wall Height     | 9'                                |
| Main Wall Height           | 9'                                |
| Second Wall Height         | 8'                                |

## Plan Description

The appearance of this family-friendly, Modern Farmhouse style, 2-story house plan imparts a sense of solidity and simpler times. Inside from the covered front porch, guests are received into the openly defined living room with its warming fireplace. A few steps farther in reveal the island kitchen and adjacent dining area with access to the outdoors. A utility area hosts the staircase to the upper level and includes a laundry room, powder bath and mudroom with a built-in bench -- which accesses the 2-car garage. Upstairs, the master suite is separated from the secondary bedrooms for privacy. The master bath includes a walk-in shower, along with a sizeable walk-in closet. Bedrooms 2 and 3 share a jack and jill bath. Across from bedroom 3, an unfinished storage area adds the potential of 260 sq. ft. of usable space, where the possibilities are endless.