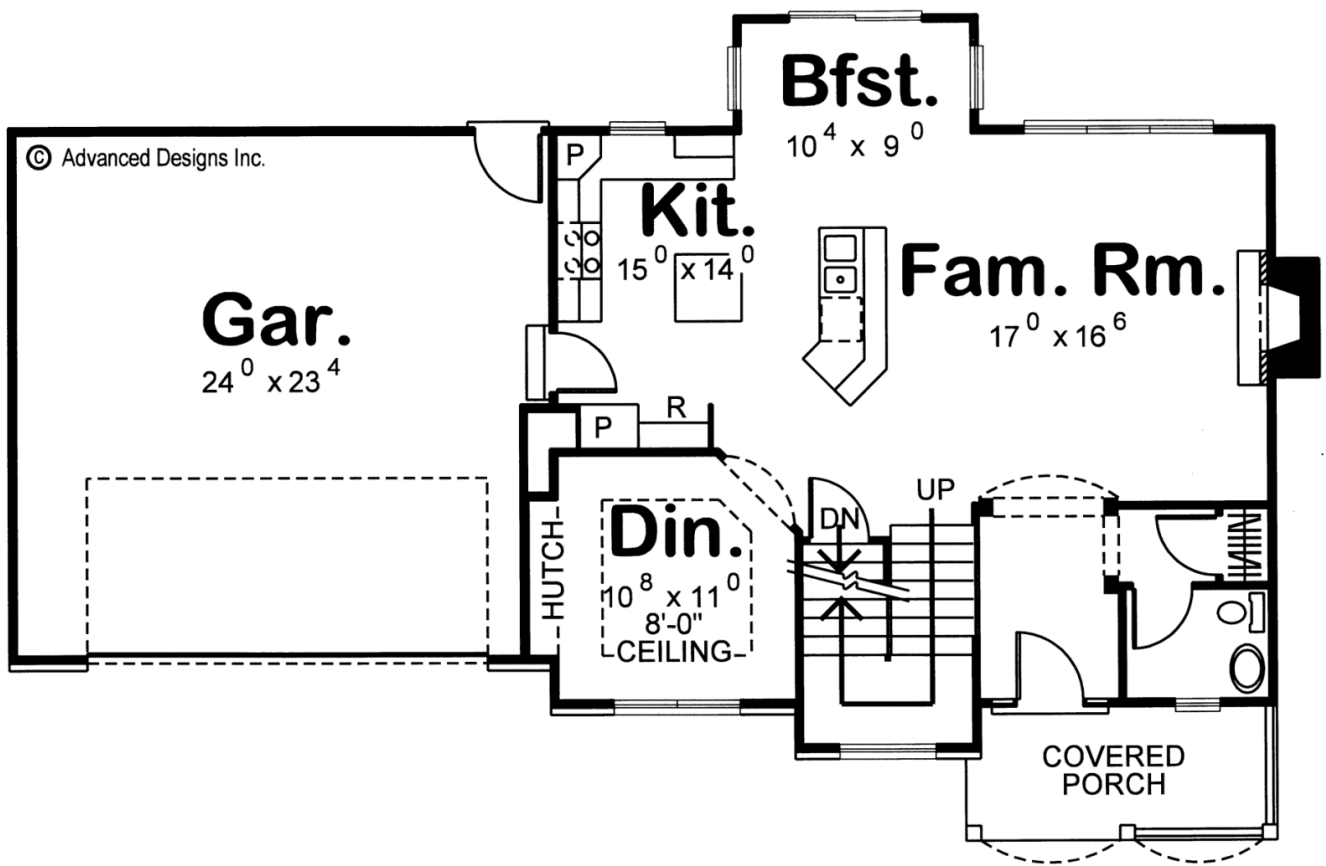


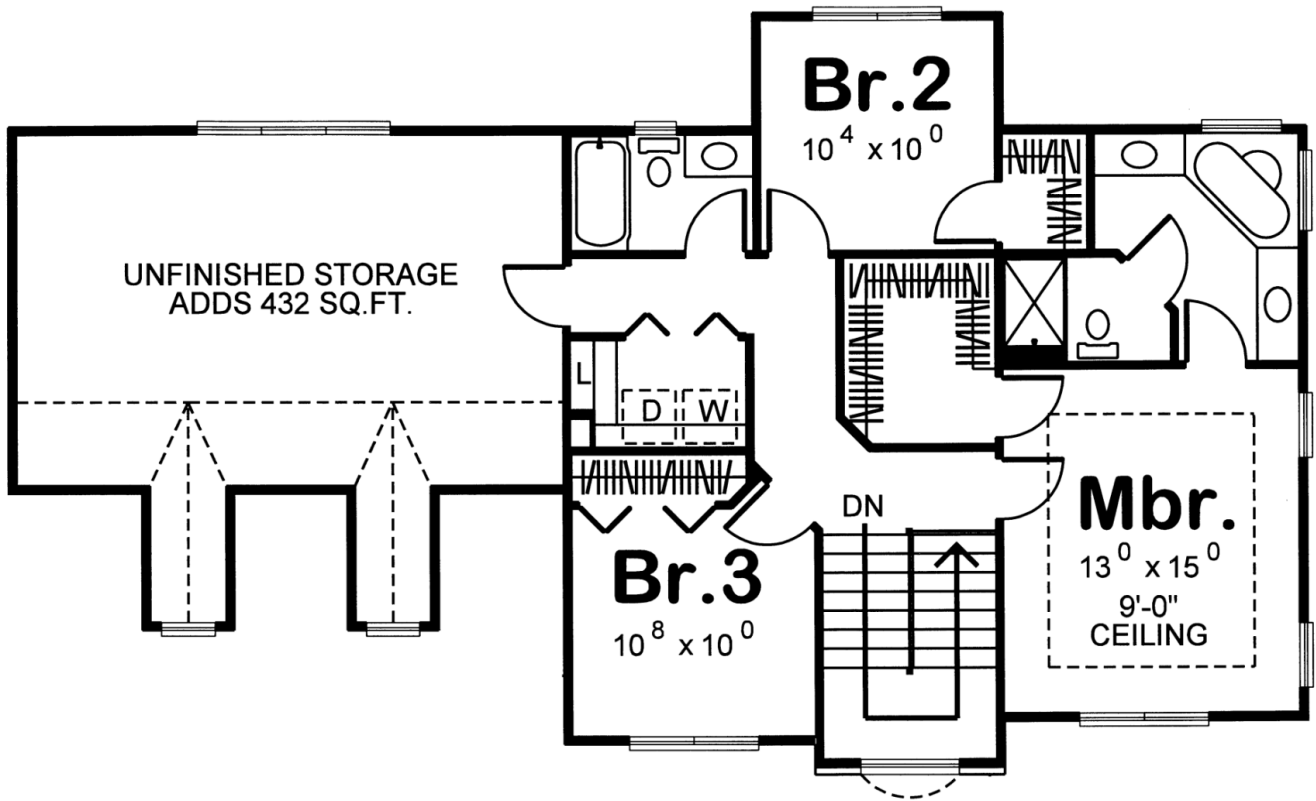
ADVANCED
HOUSE PLANS



29128 - Brackett Data Sheet

1783 SQ FT	3 BEDS	3 BATHS	2 BAYS	57' 0" WIDE	37' 0" DEEP
---------------	-----------	------------	-----------	----------------	----------------





Construction Specs

Layout

Bedrooms	3
Bathrooms	3
Garage Bays	2

Square Footage

Main Level	931 Sq. Ft.
Second Level	852 Sq. Ft.
Garage	562 Sq. Ft.
Total Finished Area	1783 Sq. Ft.

Exterior Dimensions

Width	57' 0"
Depth	37' 0"
Ridge Height	29'
<i>Calculated from main floor line</i>	

Default Construction Stats

Stats are unique to the individual plan.

Foundation Type	Basement
Exterior Wall Construction	2x4
Roof Pitches	Primary 9/12, Secondary 10/12
Foundation Wall Height	9'
Main Wall Height	9'
Second Wall Height	8'

Plan Description

At less than 1,800 square feet, this family-friendly, traditional-style, 2-story house plan offers practical room arrangements and an abundance of additional space. The front of the home radiates a sense of solid, established warmth with brick details, roof dormers and a covered front porch. Inside, the entry hall opens to a comfortable family room with fireplace and generous views to the rear. The open arrangement between the family room, breakfast area and kitchen creates an inviting atmosphere for entertaining guests or just hanging out with the family. Adjacent to the kitchen, a formal dining room -- with an optional expanded design -- stands ready to host memorable meals. Upstairs, the master suite includes a bath with walk-in closet, corner tub, his and her vanities and a compartmented toilet. Bedrooms 2 and 3 share a hall bath that lies just across from the laundry. An unfinished area above the garage offers an extra 432 sq. ft. of space with unlimited uses -- storage, studio, hobbies/crafts, playroom, etc.