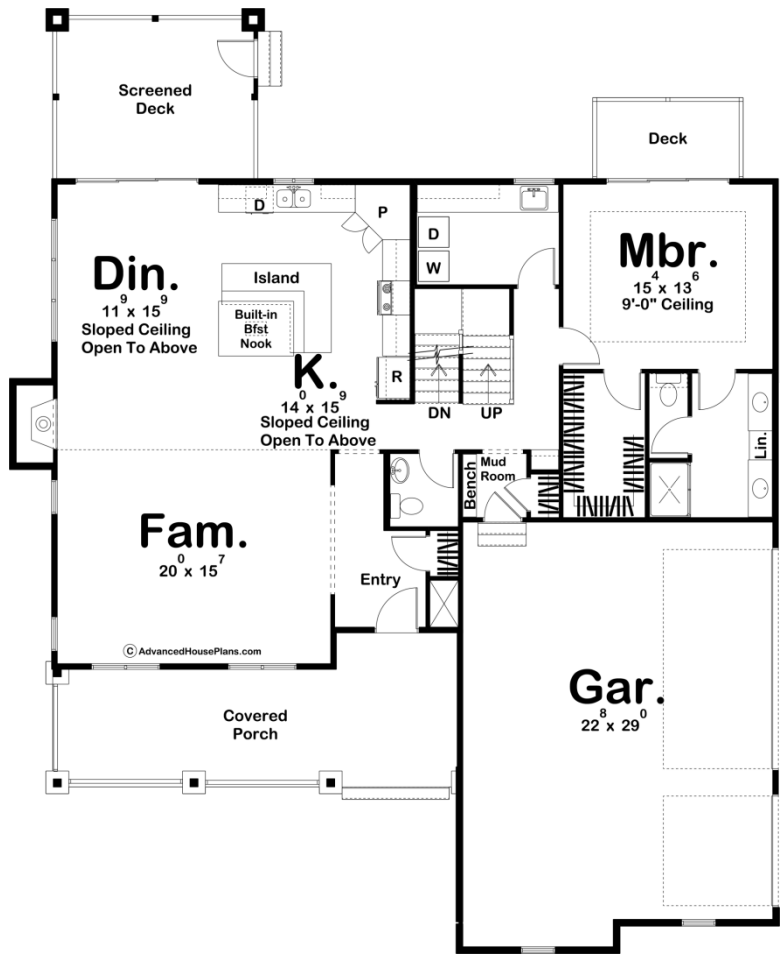


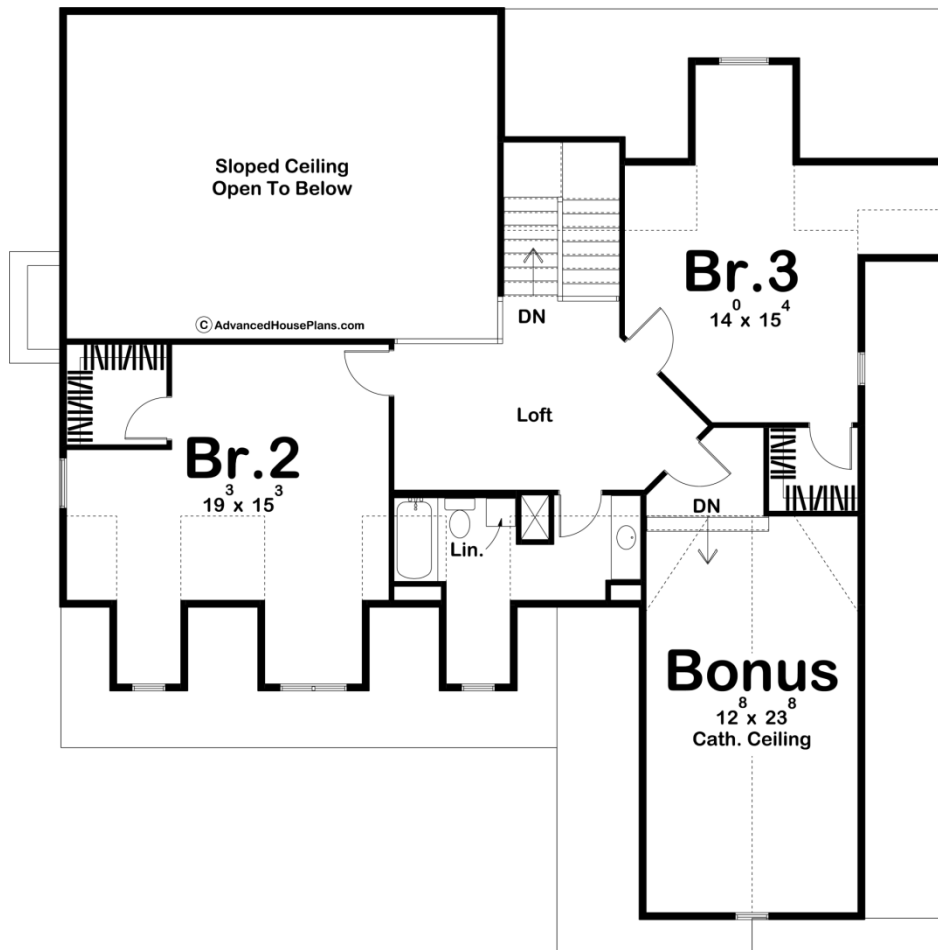


29162 - Bostwick Data Sheet

2614 SQ FT	3 BEDS	3 BATHS	3 BAYS	56' 0" WIDE	57' 0" DEEP
---------------	-----------	------------	-----------	----------------	----------------



© AdvancedHousePlans.com



Construction Specs

Layout

Bedrooms	3
Bathrooms	3
Garage Bays	3

Square Footage

Main Level	1622 Sq. Ft.
Second Level	992 Sq. Ft.
Garage	543 Sq. Ft.
Total Finished Area	2614 Sq. Ft.

Exterior Dimensions

Width	56' 0"
Depth	57' 0"
Ridge Height	25'
<i>Calculated from main floor line</i>	

Default Construction Stats

Stats are unique to the individual plan.

Foundation Type	Basement
Exterior Wall Construction	2x4
Roof Pitches	8/12 F-B, 12/12 S-S
Foundation Wall Height	9'
Main Wall Height	9'
Second Wall Height	8'

Plan Description

A trio of dormers, set above a front covered porch, enhance the comfortable, country charm of this 1.5-story house plan. Entry to the home reveals immediate views of a family room with fireplace, which lies open to the cathedral-ceilinged dining area and kitchen. The kitchen itself offers ample counter space, a corner pantry, and an angled breakfast island. Access to a screened-in rear deck just steps away, expands dining and entertaining options to the outdoors. A secluded master suite, with its own rear deck, ensures privacy from the main-floor living areas. Its bath area includes a sizeable walk-in closet, corner bath, and corner shower. On the second level, both secondary bedrooms are graced by dormered window seats and walk-in closets. A central loft area accesses a shared bath, and an expansive, unfinished storage area offers unlimited possibilities for future use.