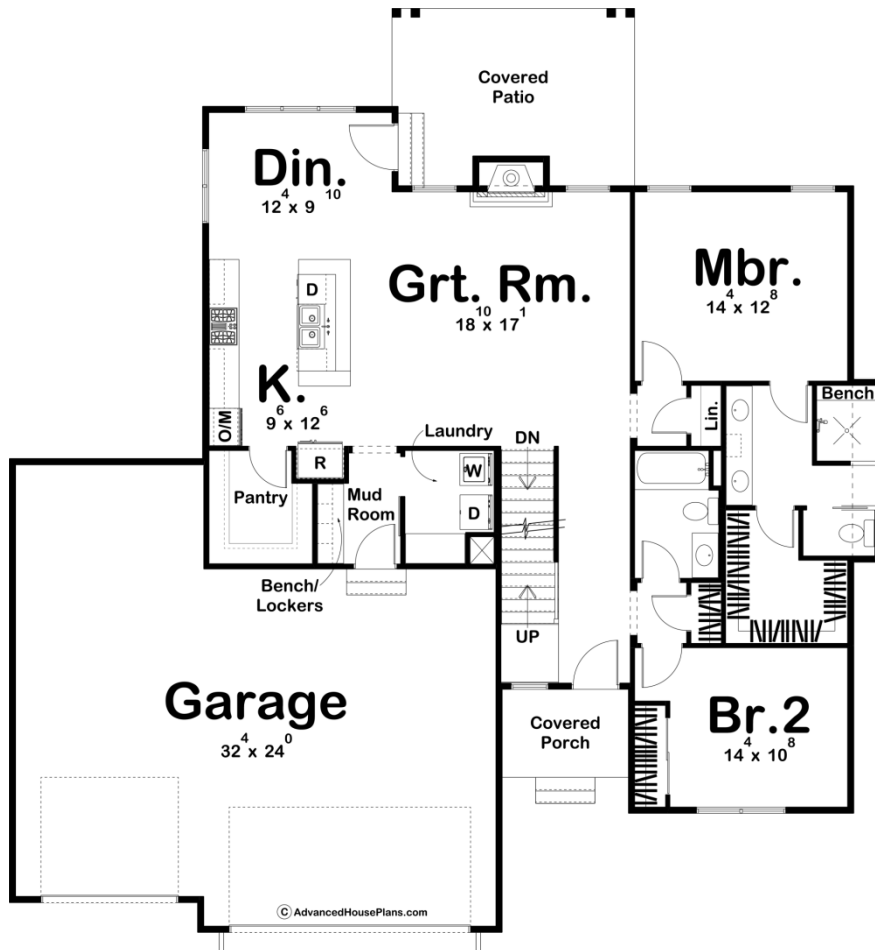
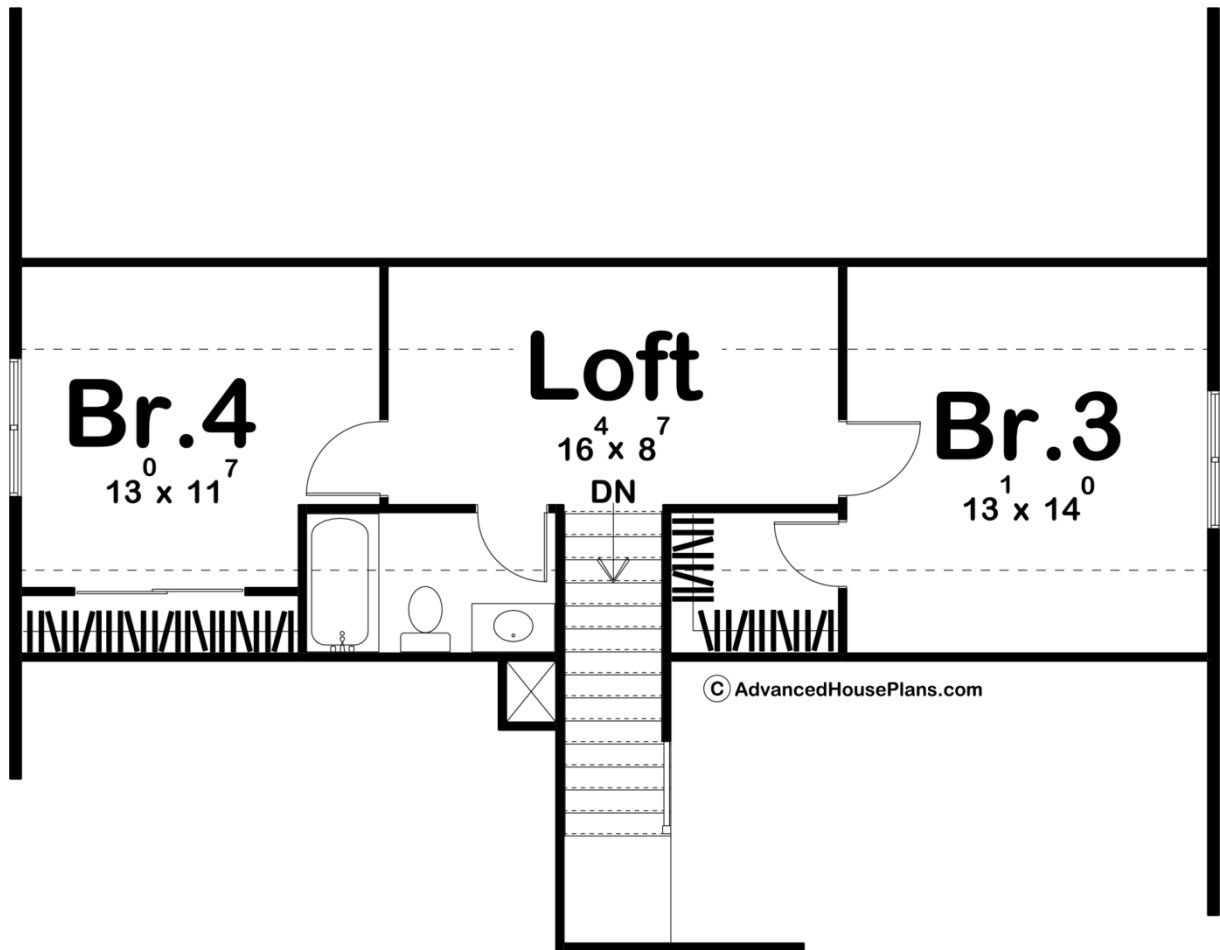




29697 - Blair Data Sheet

2148 SQ FT	4 BEDS	3 BATHS	3 BAYS	59' 0" WIDE	62' 0" DEEP
---------------	-----------	------------	-----------	----------------	----------------





Construction Specs

Layout

Bedrooms	4
Bathrooms	3
Garage Bays	3

Square Footage

Main Level	1531 Sq. Ft.
Second Level	617 Sq. Ft.
Garage	870 Sq. Ft.
Total Finished Area	2148 Sq. Ft.

Exterior Dimensions

Width	59' 0"
Depth	62' 0"

Default Construction Stats

Stats are unique to the individual plan.

Foundation Type	Basement
-----------------	----------

Exterior Wall Construction	2x4
Roof Pitches	8/12 Primary, 9/12 Secondary
Foundation Wall Height	9'
Main Wall Height	9'

Plan Description

A covered front porch and board and batten siding establish a sense of comfort on this 2148 sq. ft., 1.5-story house plan. Inside, a few steps bring guests into the great room, with its fireplace, views to the rear and boundary-defining cathedral ceiling. The kitchen and dinette lie open to the great room for comfortable entertaining. The kitchen itself is well-appointed, with an island work station with a snack bar and shelves and a walk-in pantry. The dinette has access to a covered patio off the rear of the home. Just off the kitchen, a mud room with bench and lockers accesses the home's 3-car, front-load garage. The master suite resides on the other side of the home and is tucked away for privacy. Its bath area features his-and-her vanities, a compartmented toilet, and a sizeable walk-in closet. Bedrooms 2 and 3 are upstairs separated from the master suite for privacy. Both secondary bedrooms share a central hall bath. There is also a loft that is great for a kids space upstairs.