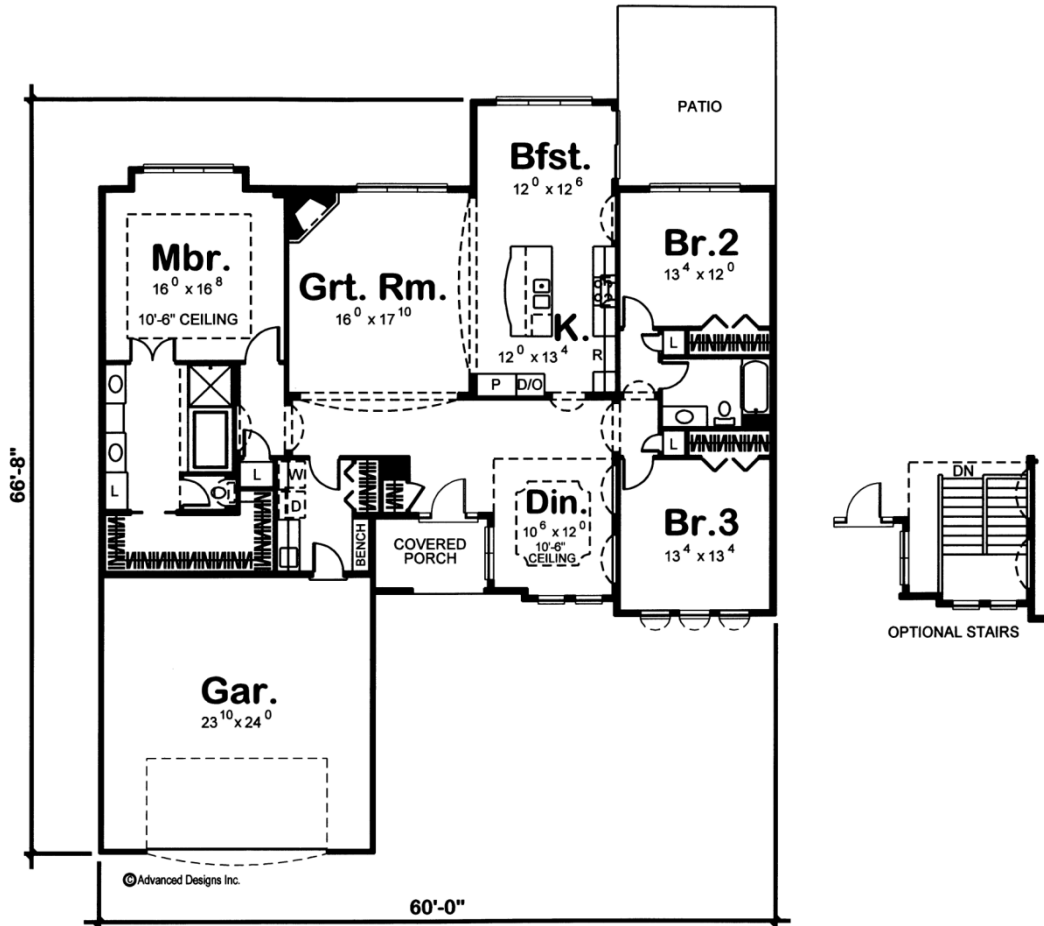




29076 - Biltmore Data Sheet

2212 SQ FT	3 BEDS	2 BATHS	2 BAYS	60' 0" WIDE	67' 0" DEEP
---------------	-----------	------------	-----------	----------------	----------------



Construction Specs

Layout

Bedrooms

Bathrooms	2
Garage Bays	2

Square Footage

Main Level	2212 Sq. Ft.
Garage	596 Sq. Ft.
Total Finished Area	2212 Sq. Ft.

Exterior Dimensions

Width	60' 0"
Depth	67' 0"
Ridge Height <i>Calculated from main floor line</i>	17'

Default Construction Stats

Stats are unique to the individual plan.

Foundation Type	Basement
Exterior Wall Construction	2x4
Roof Pitches	4/12
Foundation Wall Height	10'
Main Wall Height	10'

Plan Description

Gracefully arched details are repeated throughout the interior and exterior of this 2,212 sq. ft., Mediterranean-style, 1-story house plan. Tasteful, faux column detailing frames the covered front porch, where guests are welcomed to discover immediate views into the open formal dining room, with elegant wall and ceiling details -- as well as views into the great room with its sweeping arched openings and corner fireplace. The sense of open space continues to the great room and the kitchen and breakfast area. In the kitchen, an island work area with breakfast bar gracefully echoes the interior's arched theme. The breakfast area itself enjoys views to the rear, as well as access to a rear covered patio. The master suite is secluded for privacy, where the bedroom enjoys expansive views to the rear, beneath a 10'-6"-high ceiling. Double doors open to the bath area, which features his-and-her vanities, soaking tub, shower, compartmented toilet and a large walk-in closet. On the opposite side of the home, Bedrooms 2 and 3 enjoy views to the rear and front, respectively, and share a central hall bath. Just off the alcove that leads to the master suite, a laundry area/mud room with soaking sink, coat closet, and built-in bench, intercepts foot traffic from the home's 2-car, front-load garage.