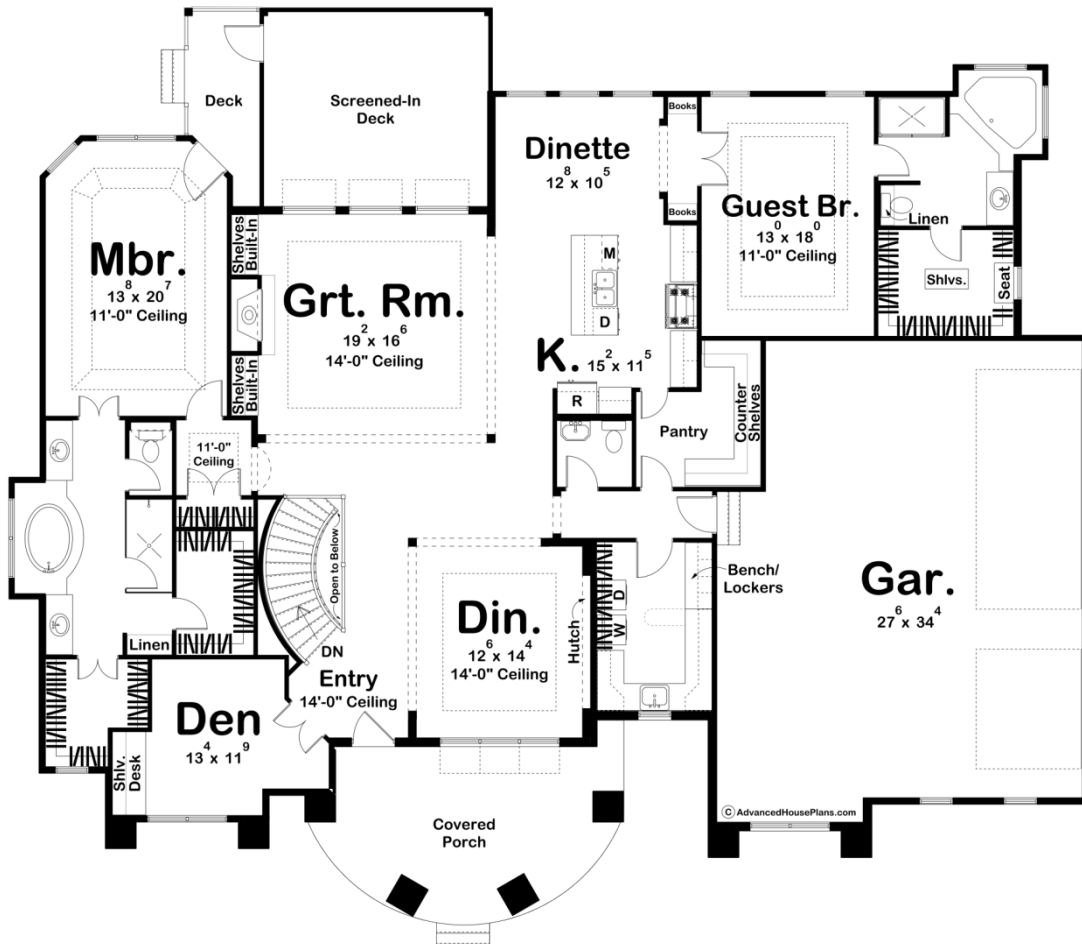




29068 - Bellamare Data Sheet

2856 SQ FT	2 BEDS	3 BATHS	3 BAYS	82' 0" WIDE	69' 0" DEEP
---------------	-----------	------------	-----------	----------------	----------------



Construction Specs

Layout

Bedrooms

Bathrooms	3
-----------	---

Garage Bays	3
-------------	---

Square Footage

Main Level	2856 Sq. Ft.
------------	--------------

Garage	949 Sq. Ft.
--------	-------------

Total Finished Area	2856 Sq. Ft.
---------------------	--------------

Exterior Dimensions

Width	82' 0"
-------	--------

Depth	69' 0"
-------	--------

Ridge Height	24'
--------------	-----

Calculated from main floor line

Default Construction Stats

Stats are unique to the individual plan.

Foundation Type	Basement
-----------------	----------

Exterior Wall Construction	2x4
----------------------------	-----

Roof Pitches	6/12
--------------	------

Foundation Wall Height	9'
------------------------	----

Main Wall Height	10'
------------------	-----

Plan Description

A sophisticated array of columns adorn a gracefully arced covered front porch on this lovely Mediterranean style 1-story house plan. Inside, a banquet of delicious amenities await. The entry area opens to a formal dining room with built-in hutch, adjacent to double doors that access a study with built-in desk. Dividing these two spaces, a graceful curved stairway leads to the home's lower level. A few steps farther inside lead to the great room with 14-foot-high ceiling and a fireplace flanked by built-in entertainment centers. A trio of windows offers views through the rear screened porch. Entertaining is made easy, as the breakfast area and kitchen lie open to the great room. The breakfast area accesses the rear covered porch to take dining options outside. The kitchen has ample workspace and features a generously sized walk-in pantry. Nearby, a laundry/mudroom with counters, soaking sink and bench offers plenty of utility space and accesses the 3-car garage. A secluded suite -- possibly for a live-in relative -- features a bath with corner tub, shower, and large walk-in closet. On the opposite side of the home, a pampering master suite includes beautiful ceiling details and has access to a private deck. The luxurious master bath presents an oval tub flanked by his and her vanities, walk-in shower, compartmented toilet, and his and her walk-in closets.