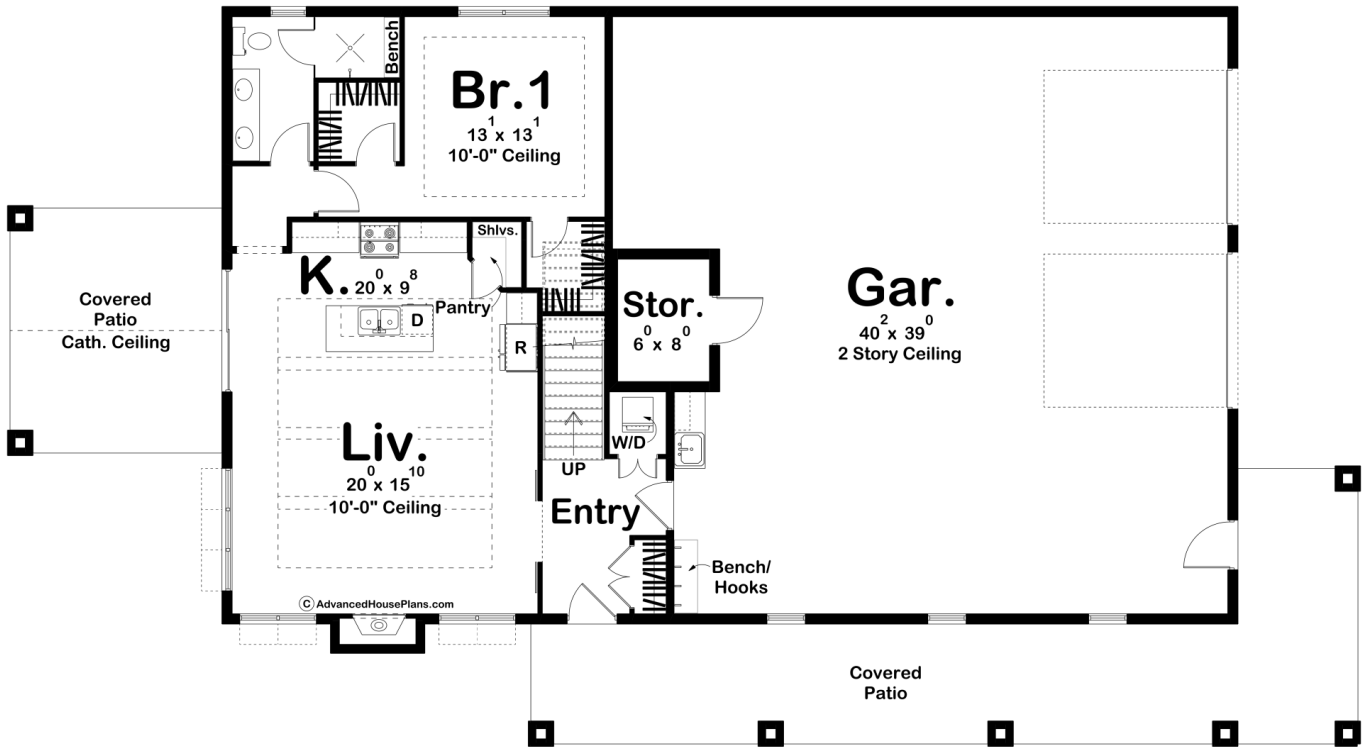
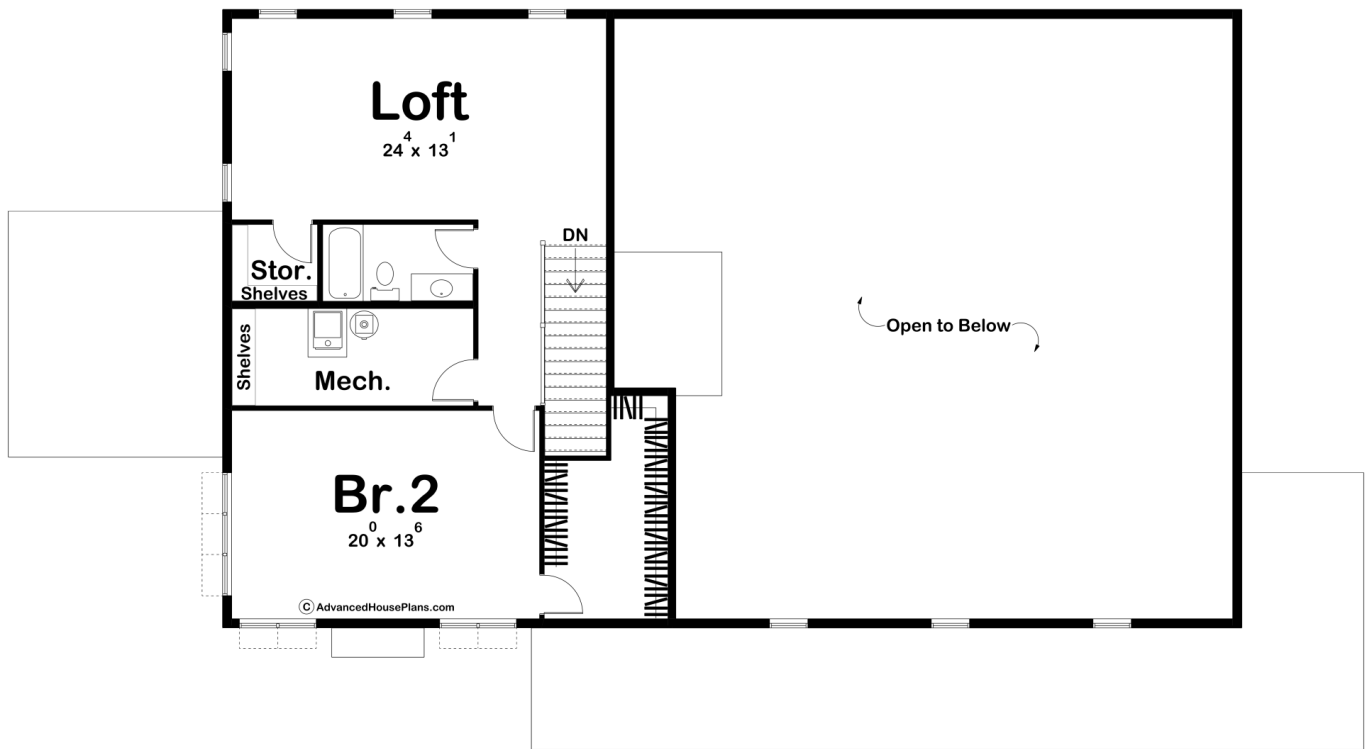




**30224 - Batenhorst Data Sheet**

2096 SQ FT	2 BEDS	2 BATHS	2 BAYS	88' 0" WIDE	48' 0" DEEP
---------------	-----------	------------	-----------	----------------	----------------





## Construction Specs

### Layout

Bedrooms	2
Bathrooms	2
Garage Bays	2

### Square Footage

Main Level	1076 Sq. Ft.
Second Level	1020 Sq. Ft.
Covered Area	736 Sq. Ft.
Garage	1513 Sq. Ft.
Total Finished Area	2096 Sq. Ft.

### Exterior Dimensions

Width	88' 0"
Depth	48' 0"

### Default Construction Stats

*Stats are unique to the individual plan.*

Foundation Type	Slab
Exterior Wall Construction	2x6
Roof Pitches	Primary 8/12, Secondary 4/12
Main Wall Height	10'
Second Wall Height	8'

## Plan Description

The Batenhorst Barndominium is a unique take on a mix of traditional materials and large barndominium spacing. This 2096 square foot home is 1513 square feet of garage, giving the traditional barndominium aspect. Enter the home through the two car garage, or head on in from the covered patio, either option greets you with a beautiful entryway and mudroom. Upon entering the home, you can find a large living room with ten foot ceilings, as well as a large, open concept kitchen. The built-in fireplace or breakfast bar are two great spaces to connect with family or friends while entertaining. Just around the corner, you can find the first bedroom that has two walk-in closets, as well as a full sized bathroom. Upstairs, you can find an additional bedroom and bathroom, as well as a loft area that overlooks the living room below. Hangout here or head outside to the additional covered patio on the main floor and truly soak in those special moments and spectacular views.