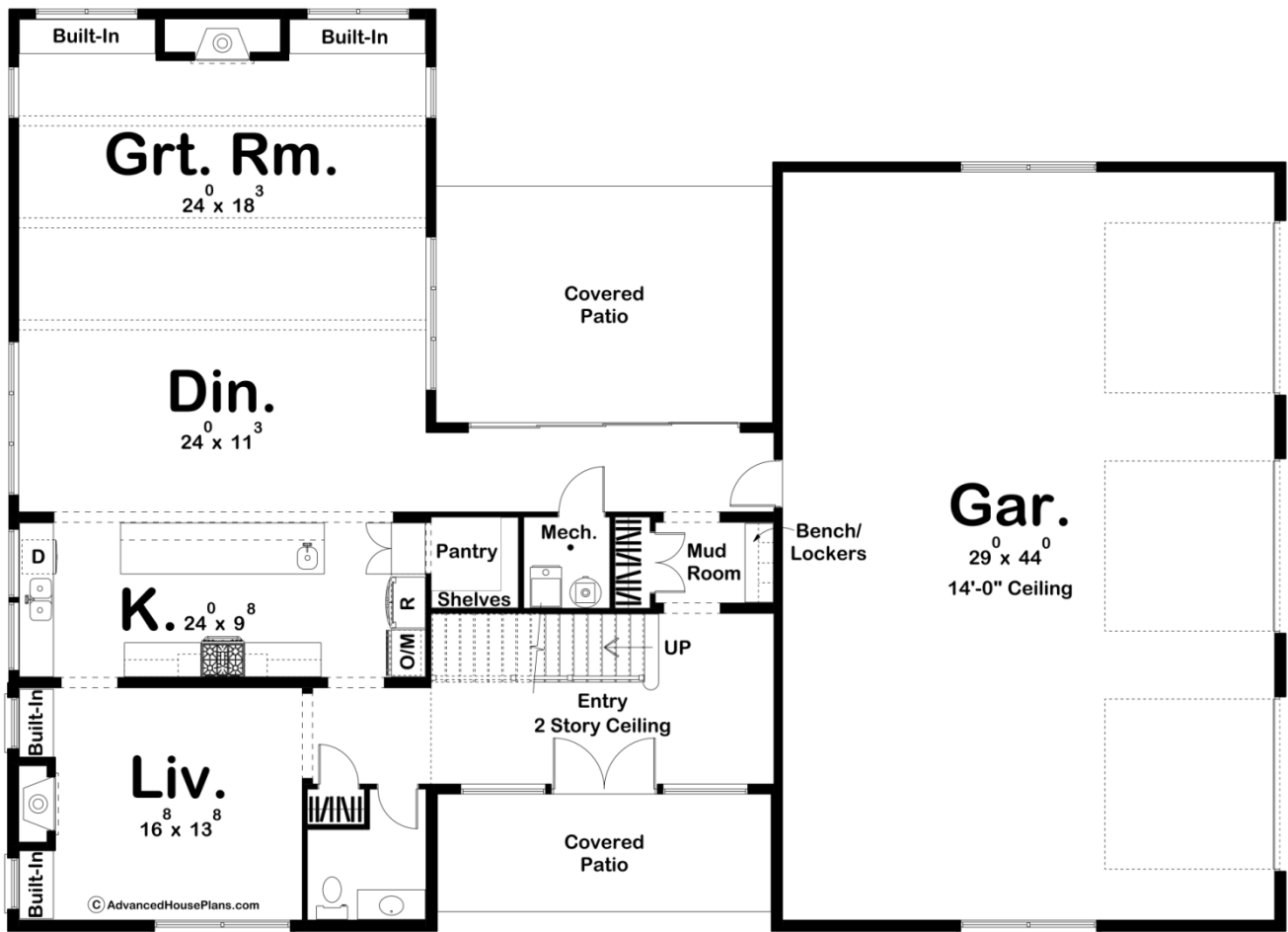
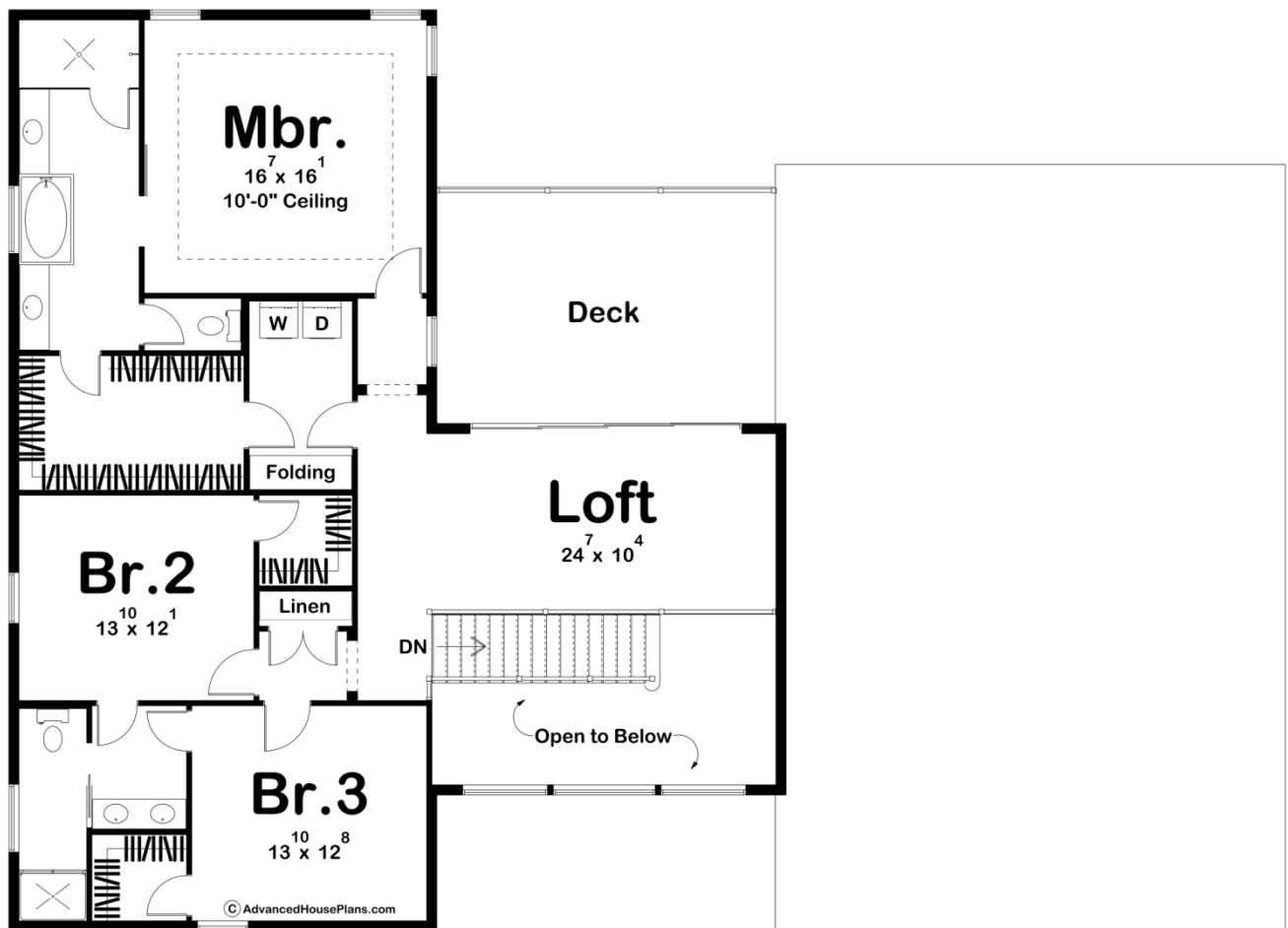




30169 - Barton Creek Data Sheet

3362 SQ FT	3 BEDS	3 BATHS	3 BAYS	75' 0" WIDE	54' 0" DEEP
---------------	-----------	------------	-----------	----------------	----------------





## Construction Specs

### Layout

Bedrooms	3
Bathrooms	3
Garage Bays	3

### Square Footage

Main Level	1794 Sq. Ft.
Second Level	1568 Sq. Ft.
Covered Area	420 Sq. Ft.
Garage	1367 Sq. Ft.
Total Finished Area	3362 Sq. Ft.

### Exterior Dimensions

Width	75' 0"
Depth	54' 0"

### Default Construction Stats

*Stats are unique to the individual plan.*

Foundation Type	Slab
Exterior Wall Construction	2x6
Roof Pitches	6/12 Primary, 10/12 Secondary
Main Wall Height	9'
Second Wall Height	9'

## Plan Description

The Barton Creek is an exciting Barndominium style house plan. The exterior showcases a beautiful array of windows mixed with board and batten siding and light-colored stone. A front covered porch invites guests into the grand entry that lies under a soaring 2-story ceiling. On the left side of the home, you'll find the kitchen, dining room, and great room all arranged in an open layout. The kitchen includes a large island with a prep sink and a walk-in pantry. The great room is warmed by a fireplace that is flanked by built-in bookshelves and lies under exposed wood beams. A formal living room has its own fireplace. On the second level, you'll find 3 bedrooms including an amazing master suite. The master bedroom features a decorative trayed ceiling. The master bathroom includes a soaking tub, his/her vanities, a walk-in shower, and a large walk-in closet. The master closet has convenient access to the home's laundry room. Bedrooms 2 and 3 share a jack and jill bathroom and each has its own walk-in closet. A wonderful loft has access to a large deck through a huge sliding glass door. Back on the main floor, the Barndominium homes oversized 3 car garage accesses the home through a convenient mud room with a bench and lockers.