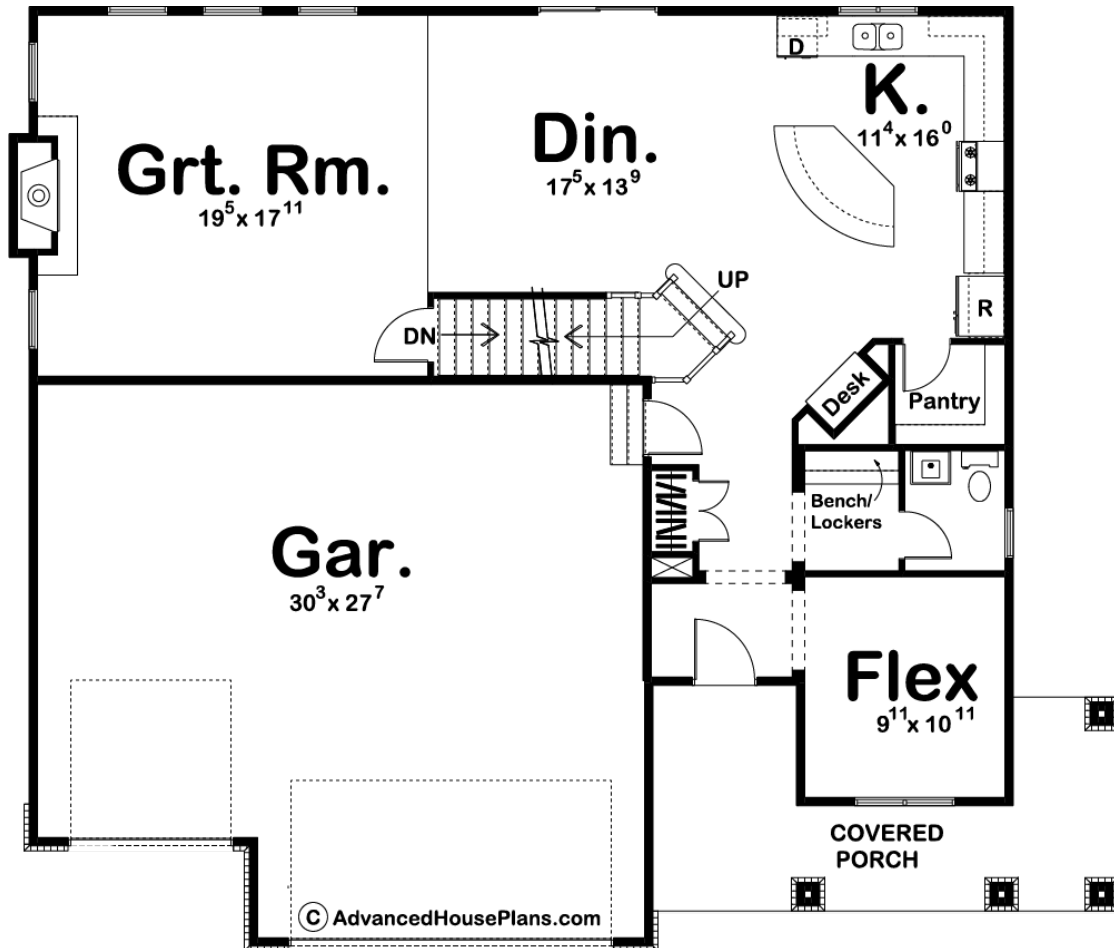


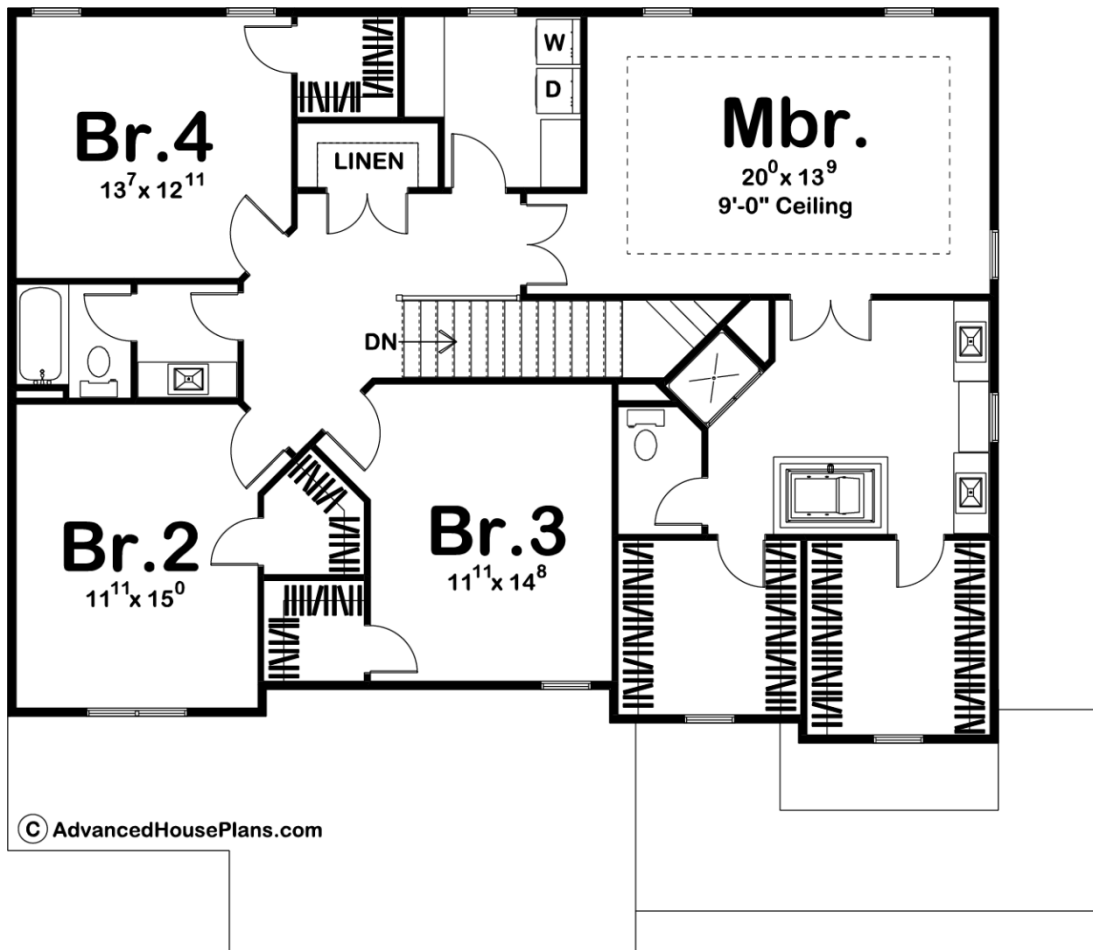


©WWW.ADVANCEDHOUSEPLANS.COM

29321 - Baker Data Sheet

|               |           |            |           |                |                |
|---------------|-----------|------------|-----------|----------------|----------------|
| 2906<br>SQ FT | 4<br>BEDS | 3<br>BATHS | 3<br>BAYS | 54' 0"<br>WIDE | 47' 0"<br>DEEP |
|---------------|-----------|------------|-----------|----------------|----------------|





## Construction Specs

### Layout

|             |   |
|-------------|---|
| Bedrooms    | 4 |
| Bathrooms   | 3 |
| Garage Bays | 3 |

### Square Footage

|                     |              |
|---------------------|--------------|
| Main Level          | 1255 Sq. Ft. |
| Second Level        | 1651 Sq. Ft. |
| Garage              | 813 Sq. Ft.  |
| Total Finished Area | 2906 Sq. Ft. |

### Exterior Dimensions

|  |        |
|--|--------|
| Width                                  | 54' 0" |
| Depth                                  | 47' 0" |
| Ridge Height                           | 30'    |
| <i>Calculated from main floor line</i> |        |

### Default Construction Stats

*Stats are unique to the individual plan.*

|                            |          |
|----------------------------|----------|
| Foundation Type            | Basement |
| Exterior Wall Construction | 2x4      |
| Roof Pitches               | 6/12     |
| Foundation Wall Height     | 9'       |
| Main Wall Height           | 9'       |
| Second Wall Height         | 8'       |

## Plan Description

Traditional styling, enhanced by sturdy columns, a wrapping front porch and plenty of storage space, makes this 4-bedroom, 2-story house plan a great choice for growing families. Just inside the entry, a flex room offers unlimited options for use. A few additional steps reveal the dining area and kitchen with angled island work area, pantry, and built-in desk. The great room interacts openly with the kitchen and dining area and features a fireplace and plenty of natural light from five windows. A 3-car garage accesses the home adjacent to where a handy coat closet resides in the entry hall. Upstairs, the master suite boasts a sizeable bath area with his-and-her vanities, soaking tub, shower, compartmented toilet and a pair of roomy walk-in closets. Bedrooms 2, 3 and 4 each have a walk-in closet and they share a centrally located hall bath. In the hallway, a laundry room and linen closet serve all bedrooms.