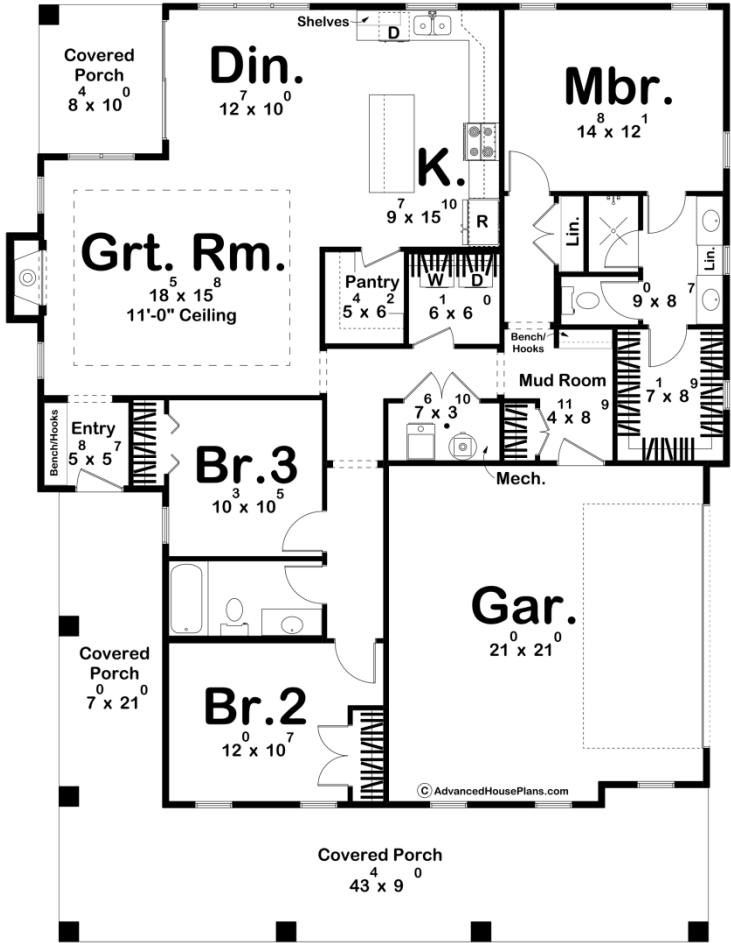




30403 - Bainbridge Data Sheet

| | | | | | |
|---------------|-----------|------------|-----------|----------------|----------------|
| 1653 SQ FT | 3 BEDS | 2 BATHS | 2 BAYS | 48' 0" WIDE | 62' 4" DEEP |
|---------------|-----------|------------|-----------|----------------|----------------|



Construction Specs

Layout

Bedrooms

| | |
|--|-------------------------------------|
| Bathrooms | 2 |
| Garage Bays | 2 |
| Square Footage | |
| Main Level | 1653 Sq. Ft. |
| Covered Area | 629 Sq. Ft. |
| Garage | 474 Sq. Ft. |
| Total Finished Area | 1653 Sq. Ft. |
| Exterior Dimensions | |
| Width | 48' 0" |
| Depth | 62' 4" |
| Default Construction Stats <i>Stats are unique to the individual plan.</i> | |
| Foundation Type | Slab |
| Exterior Wall Construction | 2x4 |
| Roof Pitches | Primary 8/12, Secondary 4/12, 12/12 |
| Main Wall Height | 10' |

Plan Description

Introducing the Southern Style House Plan – Bainbridge – a perfect blend of traditional charm and modern comfort. This meticulously designed home embodies the warmth, hospitality, and elegance that defines Southern architecture. With its inviting facade and thoughtful layout, this residence promises an ideal blend of cozy family living and gracious entertaining. As you approach this picturesque dwelling, you are immediately drawn to the wrap-around covered porch, featuring classic round columns that offer both shade and a welcoming space to enjoy lazy afternoons and evenings. The porch is the perfect spot for sipping sweet tea and catching up with neighbors, all while immersing yourself in the tranquility of Southern living. Upon entering through the front door, you'll find yourself in the heart of the home, the great room. The great room is the epitome of comfort, with a central fireplace as its focal point, creating a cozy ambiance on cooler evenings. A tray ceiling adds a touch of elegance, making this room ideal for both relaxation and hosting gatherings with friends and family. The open-concept design seamlessly connects the dining and kitchen areas. The dining space is bathed in natural light, creating an inviting atmosphere for family meals and special occasions. The kitchen boasts modern amenities and a functional layout, complete with a walk-in pantry for storing your cooking essentials. The openness of this space promotes a sense of togetherness, perfect for both cooking and socializing. Located in a private corner of the home, the master bedroom is a serene retreat, offering a peaceful sanctuary for the homeowners. It features a walk-in closet to keep your attire organized and easily accessible. The ensuite bathroom provides the utmost in comfort and convenience, allowing you to unwind in luxury after a long day. Additionally, this house plan includes two charming bedrooms, which share a hall bathroom. These bedrooms are perfect for family members or guests, providing privacy and comfort. For the practical side of life, this house plan incorporates a two-car garage, conveniently connected to the house via a mudroom. This thoughtful design element ensures that daily routines remain convenient and organized, even on the muddiest of days. In summary, this Southern-style house plan marries the best of tradition

and modernity, creating a comfortable, inviting, and practical home. The wrap-around porch, great room with a fireplace, open dining and kitchen, and a private master suite make this residence a haven for Southern hospitality and comfortable living. It's a place where cherished memories are made.