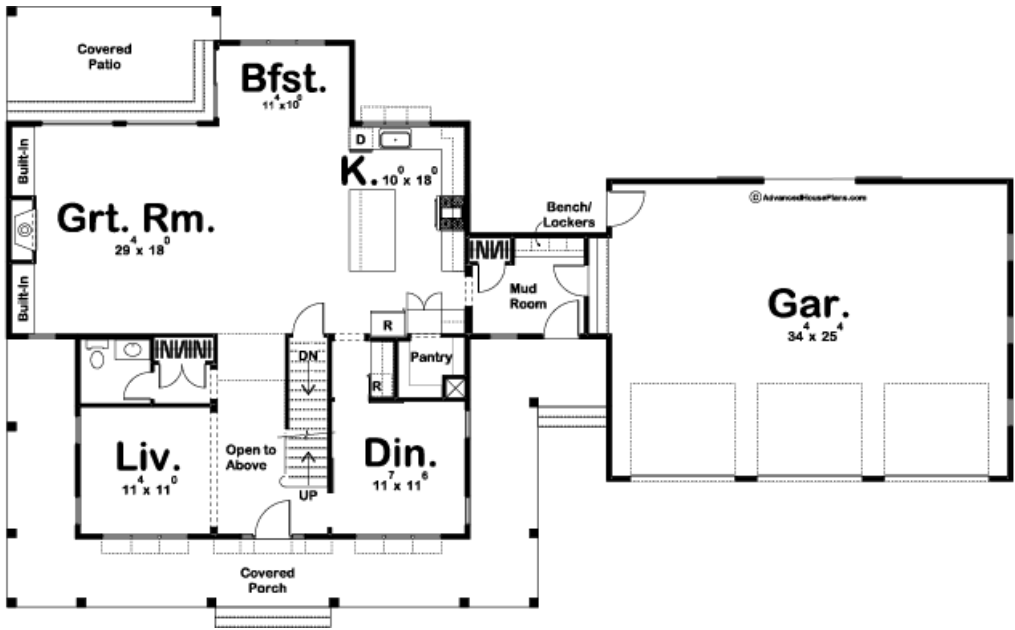
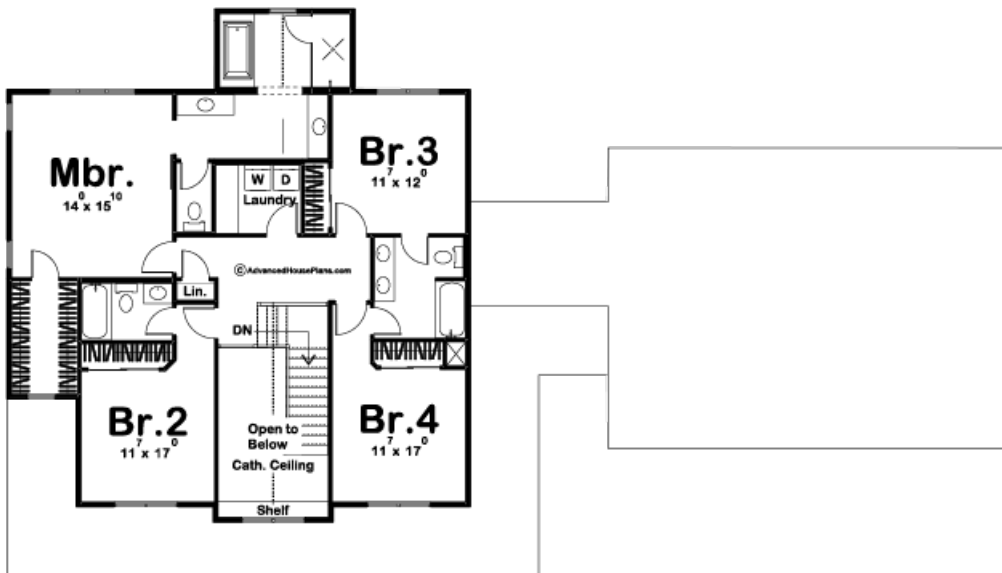




29728 - Austin Data Sheet

2835 SQ. FT.	4 BEDS	4 BATHS	3 BAYS	87' 0" WIDE	52' 0" DEEP
-----------------	-----------	------------	-----------	----------------	----------------





Construction Specs

Layout

Bedrooms	4
Bathrooms	4
Garage Bays	3

Square Footage

Main Level	1513 Sq. Ft.
Second Level	1322 Sq. Ft.
Garage	935 Sq. Ft.
Total Finished Area	2835 Sq. Ft.

Exterior Dimensions

Width	87' 0"
Depth	52' 0"

Default Construction Stats

Stats are unique to the individual plan.

Foundation Type	Basement
-----------------	----------

Exterior Wall Construction	2x4
Roof Pitches	8/12 Primary, 4/12 6/12 Secondary
Foundation Wall Height	9'
Main Wall Height	9'
Second Wall Height	8'

Plan Description

If you are looking for curb appeal, look no further than the Austin plan. The exterior screams modern farmhouse with its wrap-around porch and attached barn style garage. Inside, the entryway is flanked by both the dining room and living room and has a 2 story ceiling. Further, into the home, an open kitchen and great room provide a great space for entertaining guests. The kitchen includes a farm sink, an island with a flush snack bar, and a walk-in pantry. The great room is warmed by a beautiful brick fireplace that is flanked by built-in cabinets. A wonderful dinette leads to a covered patio that is perfect for outdoor entertainment. On the upper level of this 2 story house, you will find 4 amazing bedrooms. The master suite includes a beautiful master bathroom complete with a walk-in shower, his/her vanities, and a whirlpool tub. Bedroom 2 has its own bathroom while bedrooms 3 and 4 share a convenient jack and jill bath. Back on the main level, the absolutely beautiful barn style 3-car garage includes ample space and has a barn door that leads to the back yard. It accesses the home through a mudroom, complete with bench, lockers and a coat closet.