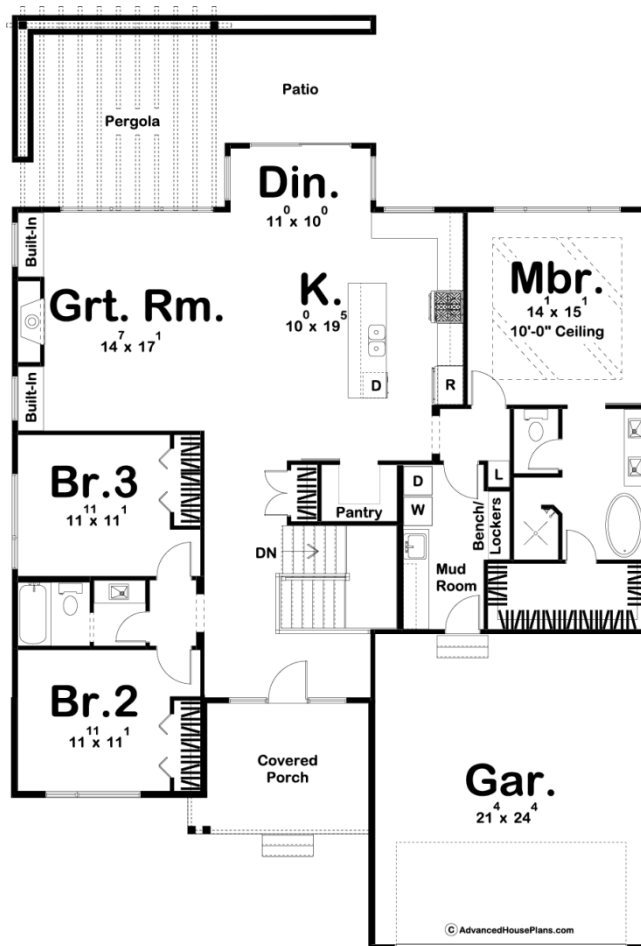




29811 - Atlanta Heights Data Sheet

1986 SQ FT	3 BEDS	2 BATHS	2 BAYS	50' 0" WIDE	73' 0" DEEP
---------------	-----------	------------	-----------	----------------	----------------



Construction Specs

Layout

Bedrooms

Bathrooms	2
-----------	---

Garage Bays	2
-------------	---

Square Footage

Main Level	1986 Sq. Ft.
------------	--------------

Garage	545 Sq. Ft.
--------	-------------

Total Finished Area	1986 Sq. Ft.
---------------------	--------------

Exterior Dimensions

Width	50' 0"
-------	--------

Depth	73' 0"
-------	--------

Ridge Height	21' 0"
--------------	--------

Calculated from main floor line

Default Construction Stats

Stats are unique to the individual plan.

Foundation Type	Basement
-----------------	----------

Exterior Wall Construction	2x4
----------------------------	-----

Roof Pitches	4/12 Primary
--------------	--------------

Foundation Wall Height	9'
------------------------	----

Main Wall Height	9'
------------------	----

Plan Description

Our Atlanta Heights plan is a great Modern style ranch plan. The exterior combines stucco, wood, and commercial glass to give the home excellent curb appeal. Once inside the home, you'll be amazed at the open floor plan. The great room is warmed by a fireplace that is flanked by built-in bookshelves. The kitchen includes an island with a snack bar. The dining room leads to a great outdoor space with a pergola. The master suite has a beautiful tray ceiling with exposed beams and includes his/her vanities and a walk-in closet. The homes 2 car garage accesses the home through a convenient mudroom that includes a bench and lockers.