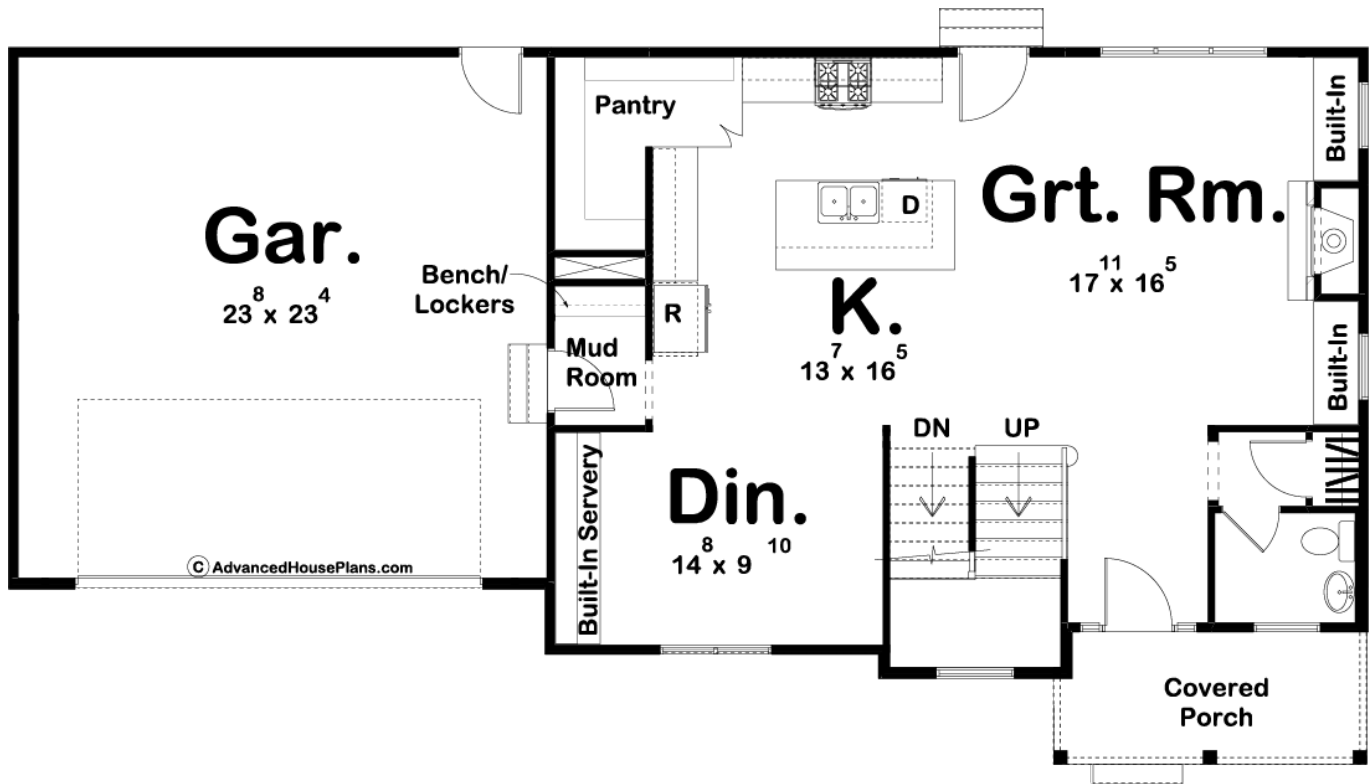


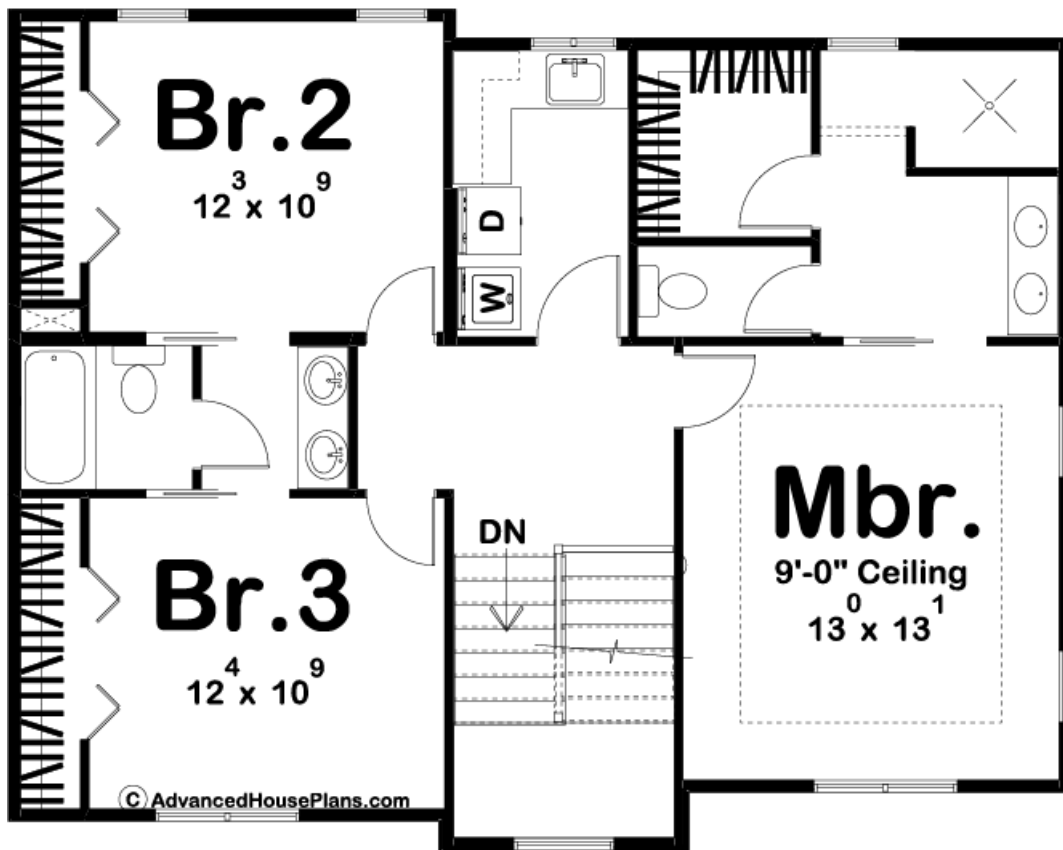
ADVANCED  
HOUSE PLANS



### 29637 - Aspen Data Sheet

1910 SQ FT	3 BEDS	3 BATHS	2 BAYS	60' 8" WIDE	32' 0" DEEP
---------------	-----------	------------	-----------	----------------	----------------





## Construction Specs

### Layout

Bedrooms	3
Bathrooms	3
Garage Bays	2

### Square Footage

Main Level	985 Sq. Ft.
Second Level	925 Sq. Ft.
Garage	576 Sq. Ft.
Total Finished Area	1910 Sq. Ft.

### Exterior Dimensions

Width	60' 8"
Depth	32' 0"

### Default Construction Stats

*Stats are unique to the individual plan.*

Foundation Type	Basement
-----------------	----------

Exterior Wall Construction	2x4
Roof Pitches	10/12 Primary, 6/12 Secondary
Foundation Wall Height	9'
Main Wall Height	9'
Second Wall Height	8'

## Plan Description

At less than 2,000 square feet, this family-friendly, Craftsman Style, 2-story house plan offers practical room arrangements and an abundance of additional space. The front of the home radiates a sense of solid, established warmth with stone details, wood beams, and a covered front porch. Inside, the entry hall opens to a comfortable family room with fireplace and built-in cabinets. The open arrangement between the family room and the kitchen creates an inviting atmosphere for entertaining guests or just hanging out with the family. Adjacent to the kitchen, a formal dining room -- with a built-in servery -- stands ready to host memorable meals. Upstairs, the master suite includes a bath with walk-in closet, walk-in shower, his and her vanities and a compartmented toilet. Bedrooms 2 and 3 share a Jack and Jill bath. Upstairs there is a large laundry room that has a folding counter and soaking sink.