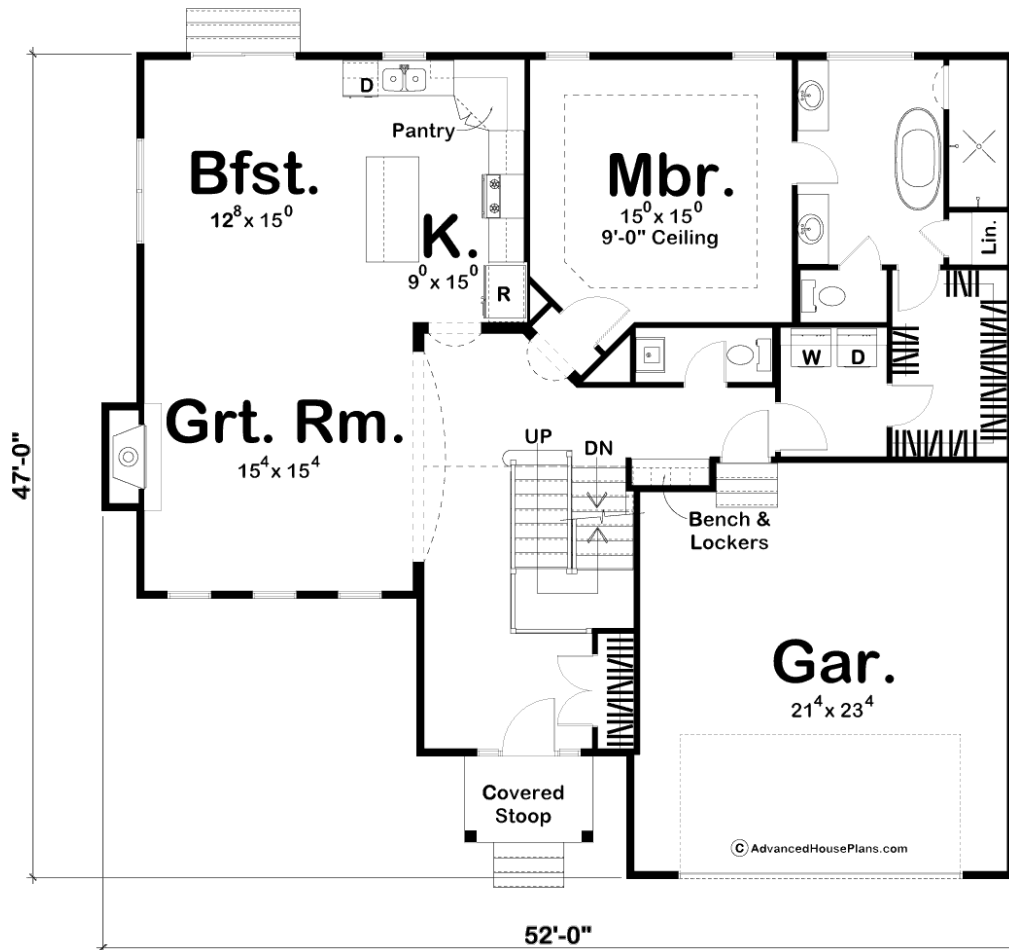
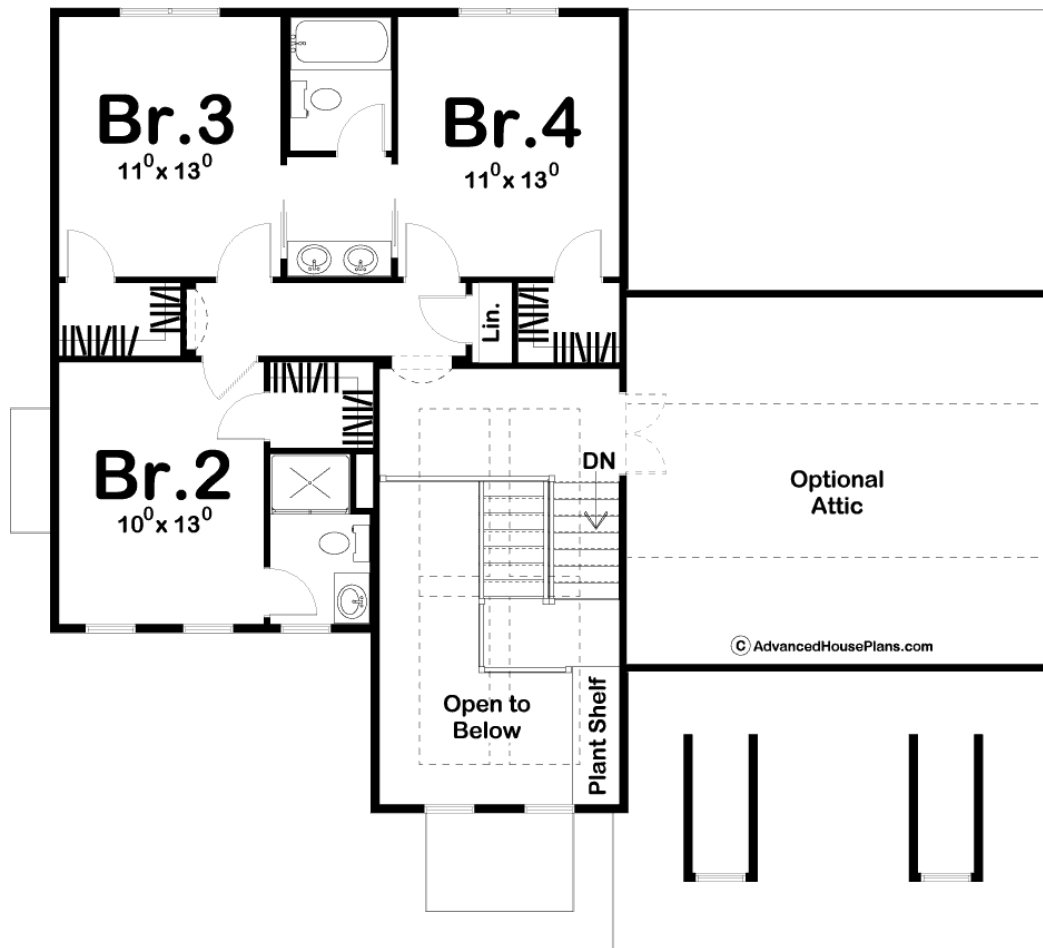




**29320 - Ashworth Data Sheet**

2317 SQ FT	4 BEDS	4 BATHS	2 BAYS	52' 0" WIDE	47' 0" DEEP
---------------	-----------	------------	-----------	----------------	----------------





## Construction Specs

### Layout

Bedrooms	4
Bathrooms	4
Garage Bays	2

### Square Footage

Main Level	1508 Sq. Ft.
Second Level	809 Sq. Ft.
Garage	506 Sq. Ft.
Total Finished Area	2317 Sq. Ft.

### Exterior Dimensions

Width	52' 0"
Depth	47' 0"
Ridge Height	29'
<i>Calculated from main floor line</i>	

## Default Construction Stats

*Stats are unique to the individual plan.*

Foundation Type	Basement
Exterior Wall Construction	2x4
Roof Pitches	6/12
Foundation Wall Height	9'
Main Wall Height	9'
Second Wall Height	8'

## Plan Description

Traditional styling, accented by charming dormers, conveys a welcoming appearance to this efficiently designed, 1.5-story home plan. Entry through the front covered stoop reveals an open arrangement of the great room, breakfast area, and kitchen. The great room is warmed by a fireplace and brightened by a trio of windows on the front wall. The kitchen itself includes a breakfast island and convenient corner pantry. The main-floor master suite is entered through an entry cove and features a 9-foot-high boxed ceiling. Its bath area features his and her vanities, walk-in shower, compartmented toilet and a walk-in closet. The walk-in closet also accesses a utility area that includes the laundry, powder bath, and mud area, featuring a bench and lockers. On a practical note, this utility area intercepts debris from the outside, as it accesses the home's 2-car garage. On the second level, three bedrooms all enjoy their own walk-in closets. Bedroom 2 has its own bath, complete with shower, while bedrooms 3 and 4 share a Jack-n-Jill bath. An optional attic area offers expansive storage space, along with countless other options for its use. As always any Advanced House Plans home plan can be customized to fit your needs with our alteration department. Whether you need to add another garage stall, change the front elevation, stretch the home larger or just make the home plan more affordable for your budget we can do that and more for you at Ahp.