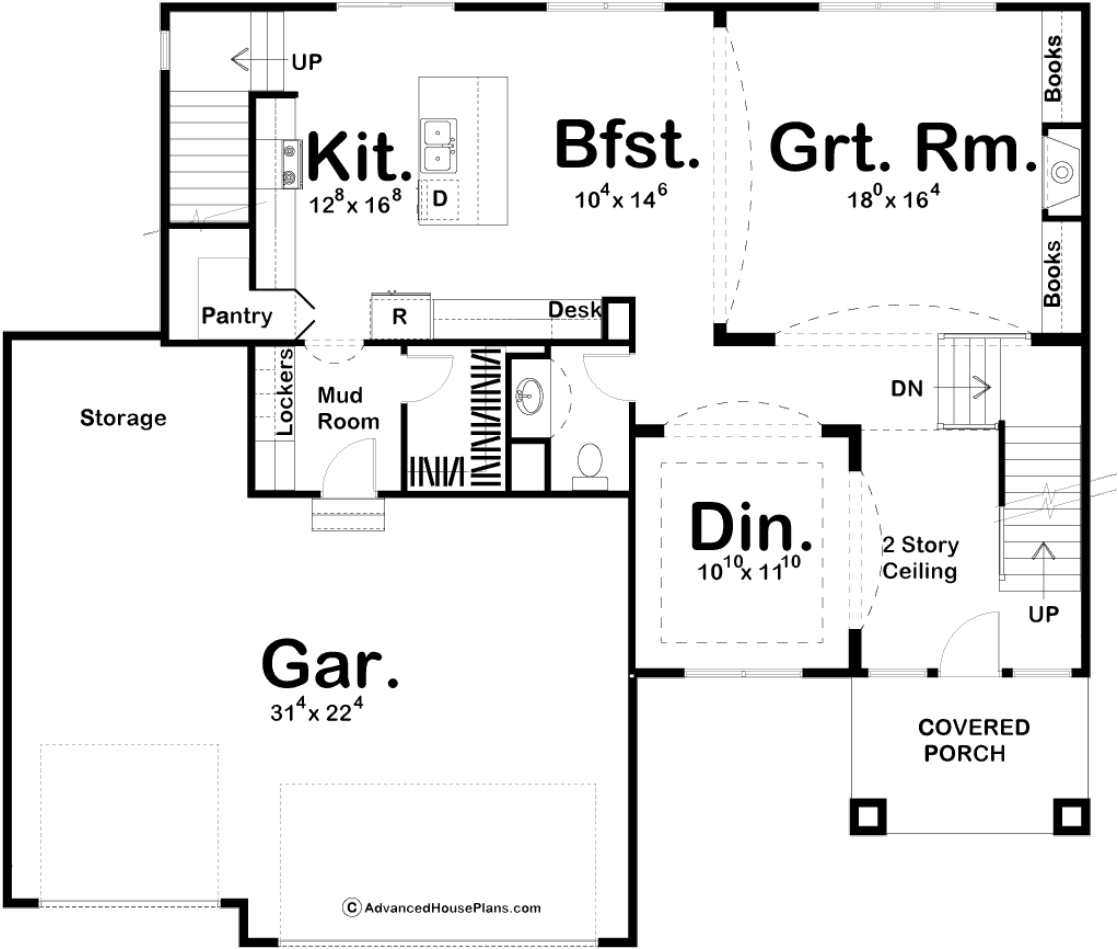
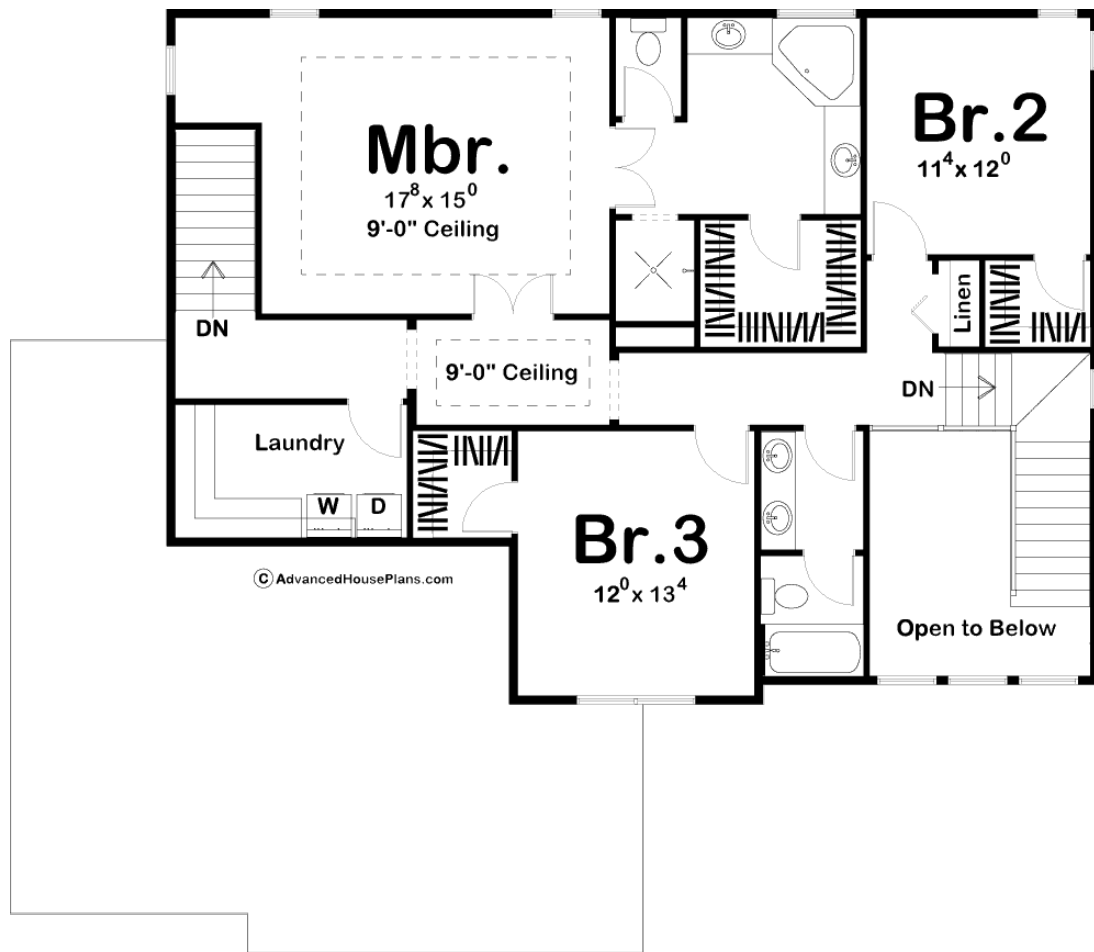




29046 - Alison Data Sheet

2633 SQ FT	3 BEDS	3 BATHS	3 BAYS	55' 0" WIDE	48' 0" DEEP
---------------	-----------	------------	-----------	----------------	----------------





Construction Specs

Layout

Bedrooms	3
Bathrooms	3
Garage Bays	3

Square Footage

Main Level	1354 Sq. Ft.
Second Level	1279 Sq. Ft.
Garage	805 Sq. Ft.
Total Finished Area	2633 Sq. Ft.

Exterior Dimensions

Width	55' 0"
Depth	48' 0"
Ridge Height	28'
<i>Calculated from main floor line</i>	

Default Construction Stats
Stats are unique to the individual plan.

Foundation Type	Basement
Exterior Wall Construction	2x4
Roof Pitches	Primary 4/12, Secondary 6/12
Foundation Wall Height	9'
Main Wall Height	9'
Second Wall Height	8'

Plan Description

Clean lines and shallow angles speak the unmistakable language of Mediterranean styling on this family-sized, 2-story house plan. Tall columns highlight the covered front porch. Upon entering the home, guests are greeted by a two-story-high entry hall with views into the formal dining room. A few steps farther inside reveal a spacious great room with a fireplace flanked by built-in bookcases. Adjacent to the great room, the breakfast area lies open to the kitchen with its breakfast island, walk-in pantry and built-in desk. Just off the kitchen, a mudroom with walk-in closet and built-in lockers accesses the three-car garage. The garage features a storage area that could opt as space for a workshop. A secondary rear stairway leads from the kitchen area to the second level. Upstairs, the master bedroom features a cozy, but naturally lit sitting area -- perfect for reading. The master bath offers pampering features that include his and her vanities, a corner tub, walk-in closet and compartmented toilet. Bedrooms 2 and 3 have walk-in closets and share a centrally located hall bath. A second-level laundry conveniently serves all bedrooms with plenty of counter space for folding clothes.