

26910

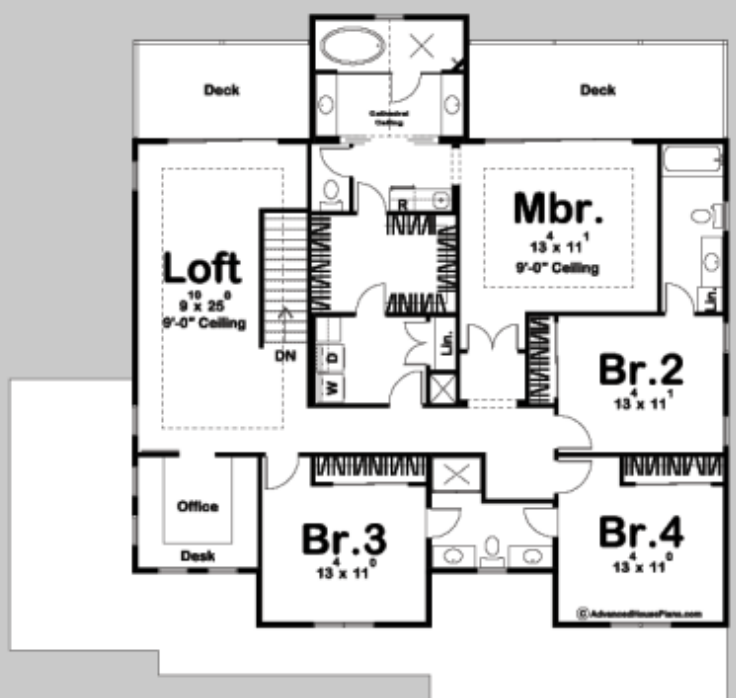
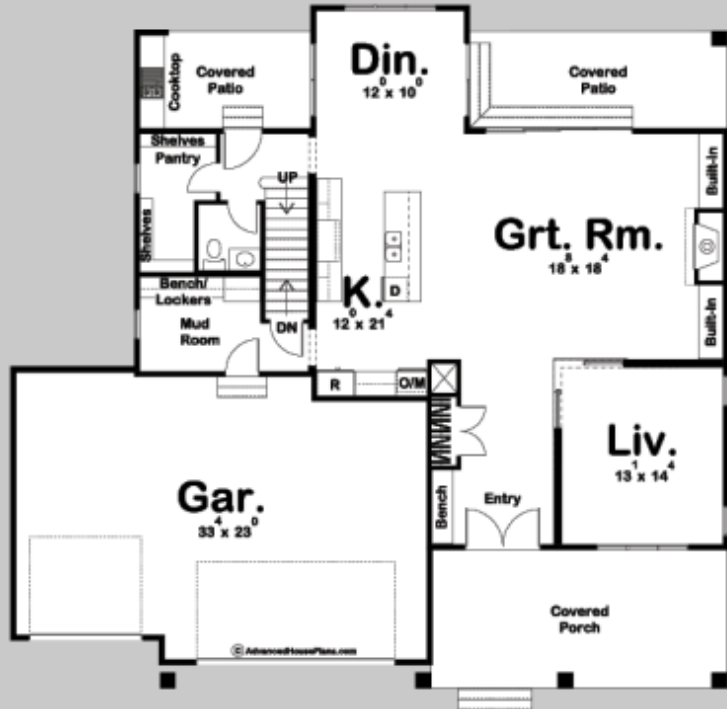


POPLAR VIEW

4 BED, 4 BATH, 3 CAR GARAGE

MAIN LEVEL:	1441 SQ FT
SECOND LEVEL:	1886 SQ FT
TOTAL FINISHED:	3327 SQ FT

EXTERIOR DIMENSIONS
58' - 0" WIDE
55' - 4" DEEP



FINISHED BASEMENT AVAILABLE ON WEBSITE

TO ORDER THIS PLAN VISIT WWW.ADVANCEDHOUSEPLANS.COM