

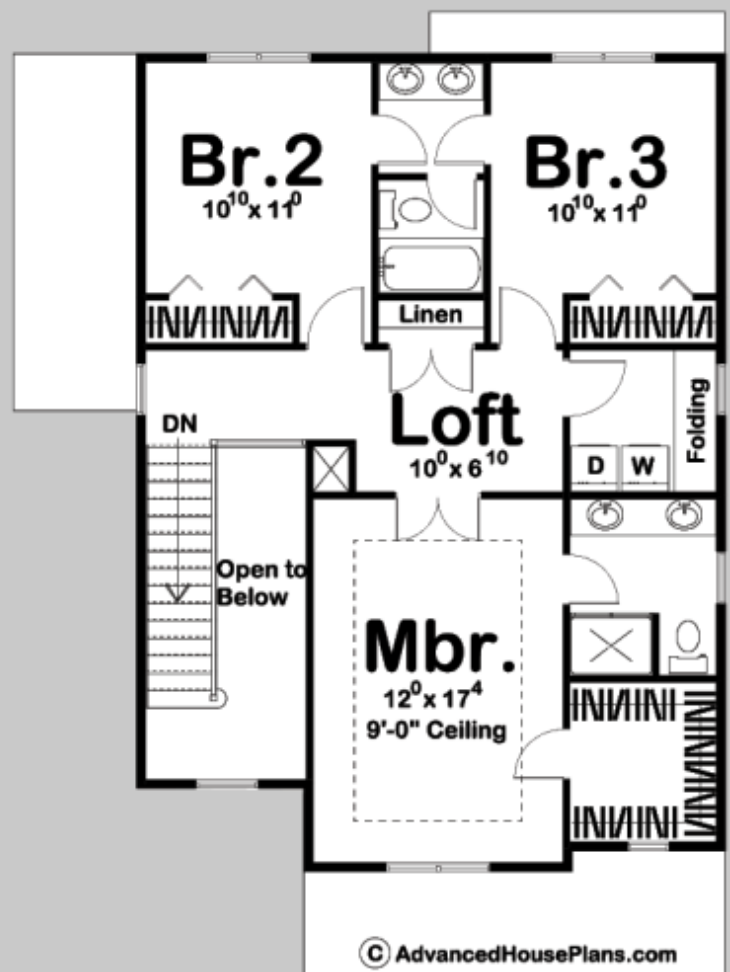
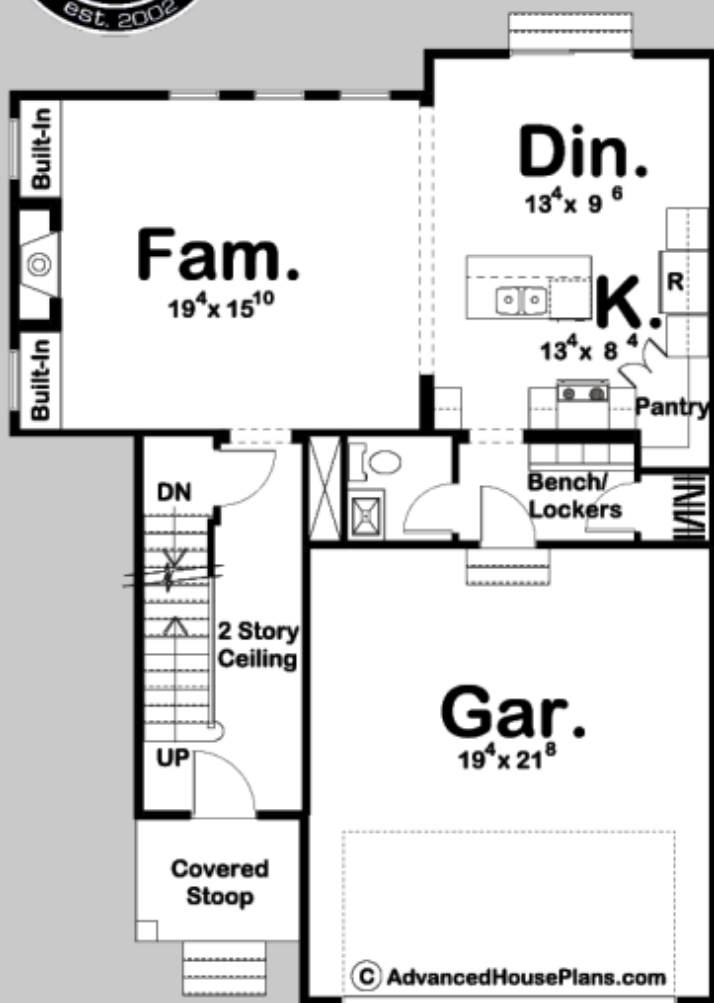
29794



**STALBIRD**  
3 BED, 3 BATH, 2 CAR GARAGE

MAIN LEVEL: 858 SQ FT  
SECOND LEVEL: 925 SQ FT  
TOTAL FINISHED: 1783 SQ FT

EXTERIOR DIMENSIONS  
34' - 4" WIDE  
46' - 0" DEEP



FINISHED BASEMENT AVAILABLE ON WEBSITE

TO ORDER THIS PLAN VISIT [WWW.ADVANCEDHOUSEPLANS.COM](http://WWW.ADVANCEDHOUSEPLANS.COM)