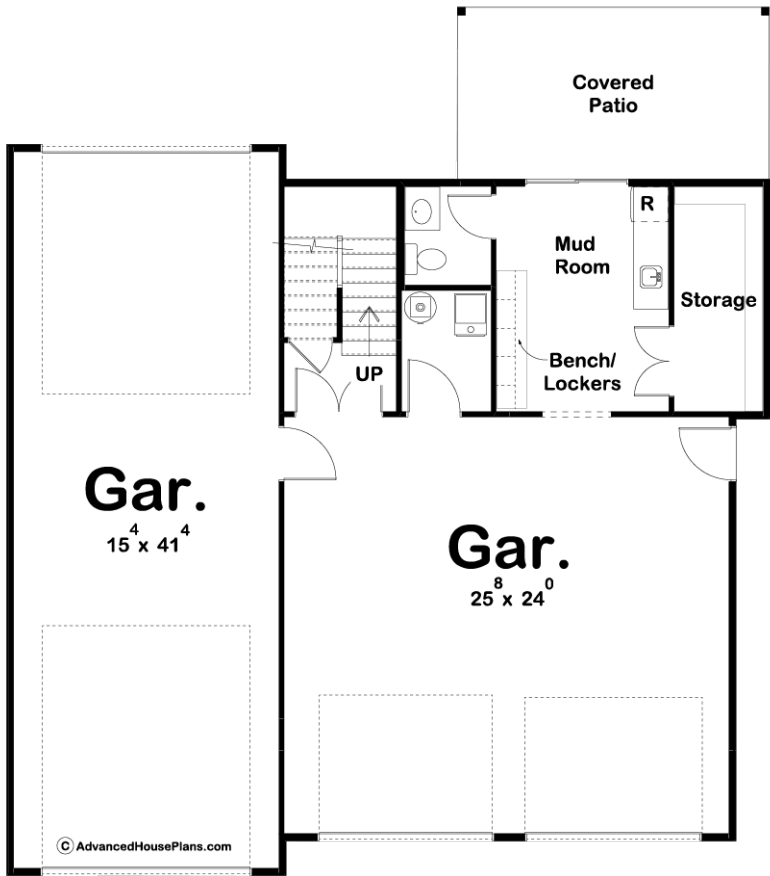
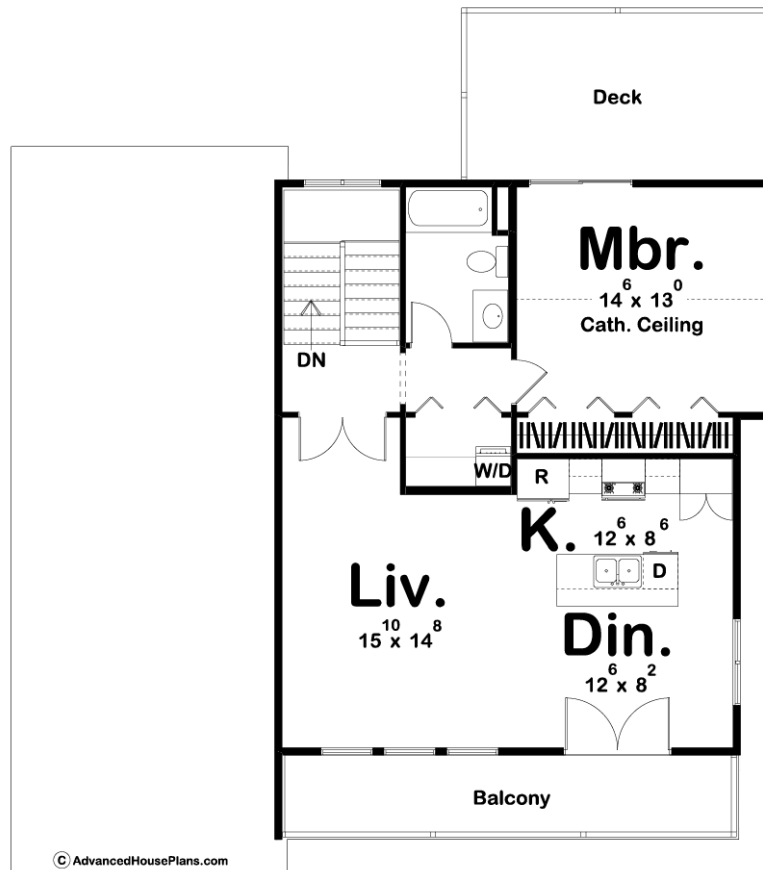




29733 - Windsor Data Sheet

1144 SQ FT	1 BEDS	2 BATHS	3 BAYS	44' 0" WIDE	50' 0" DEEP
---------------	-----------	------------	-----------	----------------	----------------





Construction Specs

Layout

Bedrooms	1
Bathrooms	2
Garage Bays	3

Square Footage

Main Level	295 Sq. Ft.
Second Level	849 Sq. Ft.
Garage	1310 Sq. Ft.
Total Finished Area	1144 Sq. Ft.

Exterior Dimensions

Width	44' 0"
Depth	50' 0"

Default Construction Stats

Stats are unique to the individual plan.

Foundation Type	Slab
-----------------	------

Exterior Wall Construction	2x4
Roof Pitches	6/12 Primary, 10/12 Secondary
Main Wall Height	9'
Second Wall Height	9'

Plan Description

Whether you are looking for a guest house or a place to park your RV, the Windsor is the perfect plan for you. The craftsman exterior gives this apartment garage a rustic feel. On the main level, you'll find a 2 car garage and a pull through RV garage. Also on the main floor is a wet bar that has a bench and lockers for storage. On the upper level of this garage, you will find an efficient apartment that has a full kitchen. The kitchen includes an island with a flush snack bar. Enjoy your outdoor space with a large balcony off of the front of the apartment.