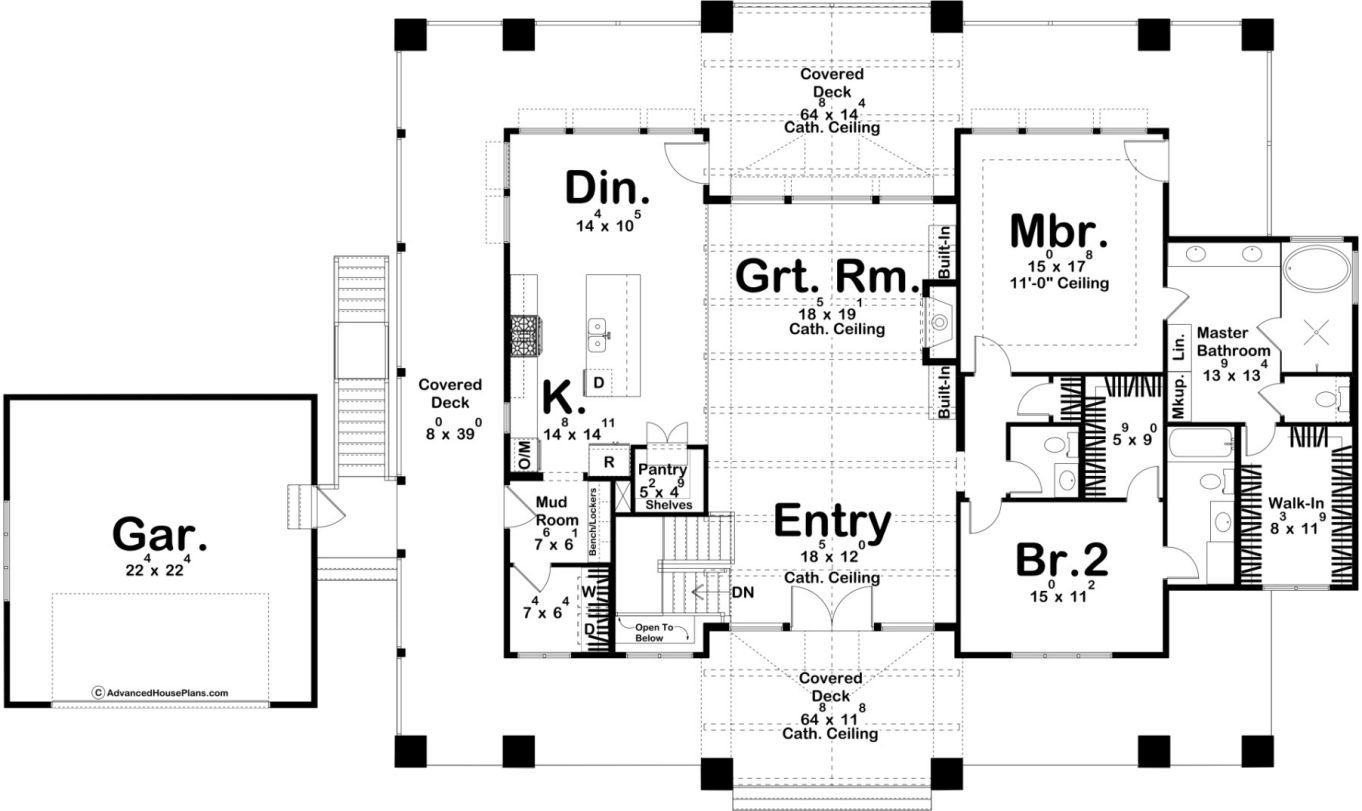
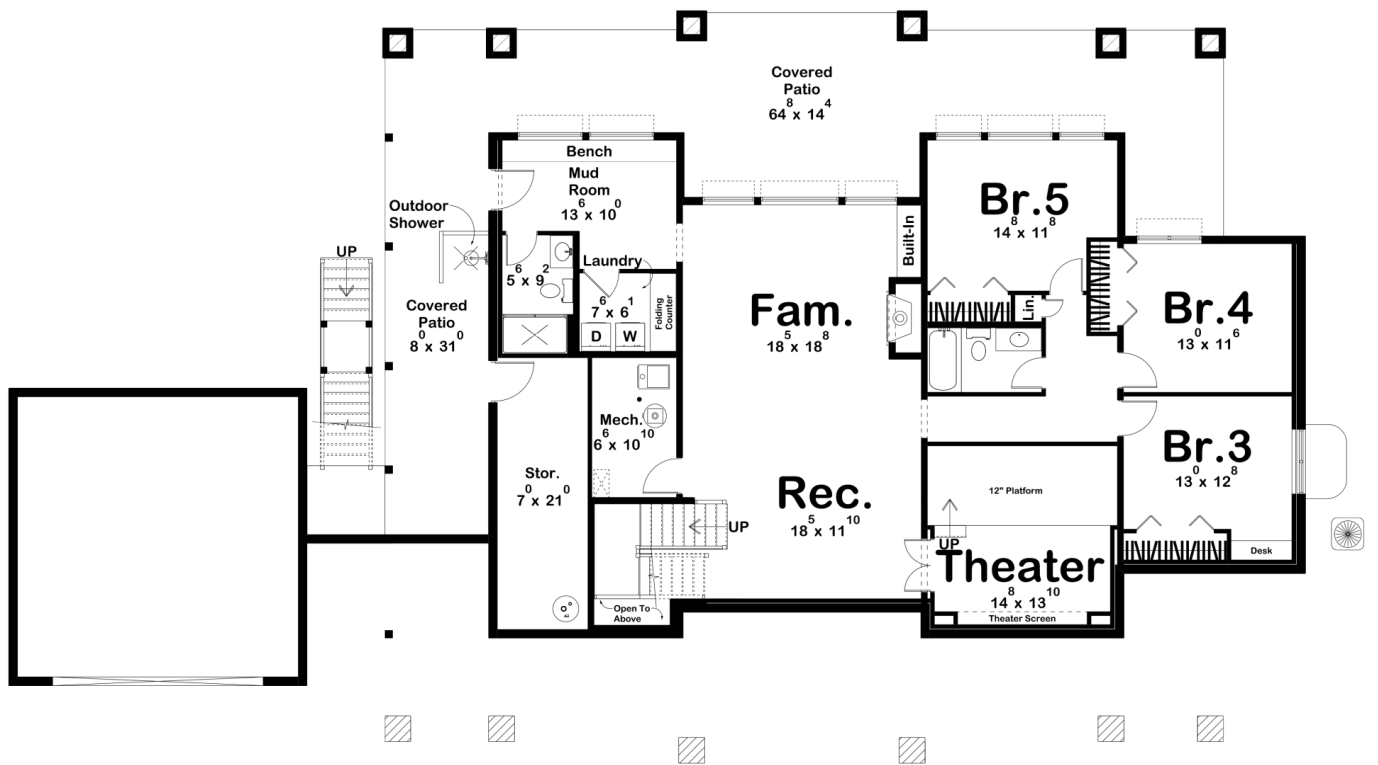




30320 - Whitewater Data Sheet

|               |           |            |           |                 |                |
|---------------|-----------|------------|-----------|-----------------|----------------|
| 2146<br>SQ FT | 2<br>BEDS | 3<br>BATHS | 2<br>BAYS | 100' 0"<br>WIDE | 58' 0"<br>DEEP |
|---------------|-----------|------------|-----------|-----------------|----------------|





## Construction Specs

### Layout

|             |   |
|-------------|---|
| Bedrooms    | 2 |
| Bathrooms   | 3 |
| Garage Bays | 2 |

### Square Footage

|                     |              |
|---------------------|--------------|
| Main Level          | 2146 Sq. Ft. |
| Covered Area        | 1684 Sq. Ft. |
| Garage              | 529 Sq. Ft.  |
| Total Finished Area | 2146 Sq. Ft. |

### Exterior Dimensions

|       |         |
|-------|---------|
| Width | 100' 0" |
| Depth | 58' 0"  |

### Default Construction Stats

*Stats are unique to the individual plan.*

|                 |         |
|-----------------|---------|
| Foundation Type | Walkout |
|-----------------|---------|

|                            |                                     |
|----------------------------|-------------------------------------|
| Exterior Wall Construction | 2x4                                 |
| Roof Pitches               | Primary 8/12, Secondary 10/12, 3/12 |
| Foundation Wall Height     | 9'                                  |
| Main Wall Height           | 10'                                 |

## Plan Description

Welcome to the picturesque 1-story beach lake house, a harmonious blend of elegance and tranquility. Nestled amidst nature's splendor, this stunning retreat boasts a walkout foundation at the rear, seamlessly integrating with the surrounding landscape. With its captivating design, it is sure to capture your heart from the moment you lay eyes on it. Approaching the front of the house, you are greeted by a charming combination of stone and wood columns that exude a timeless appeal. A sprawling, wrap-around covered deck envelops the front, offering the perfect spot to savor breathtaking views and the gentle caress of the summer breeze. This outdoor oasis is ideal for entertaining guests or simply unwinding in the embrace of nature. The exterior siding of the house showcases an exquisite shake design, enhancing its coastal charm. As you enter through the large covered entryway, your eyes are drawn to the exposed curved trusses that grace the ceiling, creating a sense of openness and grandeur. The heart of the home is the spacious open kitchen, dining, and great room. This area serves as a central hub, allowing for seamless interaction and connection. The kitchen is a chef's dream, equipped with top-of-the-line appliances, ample counter space, and an island that doubles as a breakfast bar. The dining area is bathed in natural light, offering a picturesque setting for shared meals and memorable conversations. The great room is a haven of comfort, with its generous proportions and warm ambiance, inviting relaxation and quality time with loved ones. Continuing through the great room, the cathedral ceiling spans continuously from the front covered porch to the rear covered deck, accentuated by exposed trusses. This architectural feature adds an element of drama and sophistication, creating a truly unforgettable atmosphere. The beach lake house accommodates a luxurious master suite, a sanctuary where you can retreat and rejuvenate. The master bedroom offers ample space, and the bathroom boasts lavish amenities, including a spa-like soaking tub, a walk-in shower, and elegant fixtures. A guest bedroom with its own bath provides a comfortable haven for visitors, ensuring they feel right at home. Completing the house's design is a 2-car garage, conveniently attached via the covered deck. With its seamless integration of nature, stunning architectural features, and well-appointed interior spaces, the 1-story beach lake house is a dream come true for those seeking an idyllic retreat by the water. Come and immerse yourself in the tranquility and beauty that this extraordinary home has to offer.