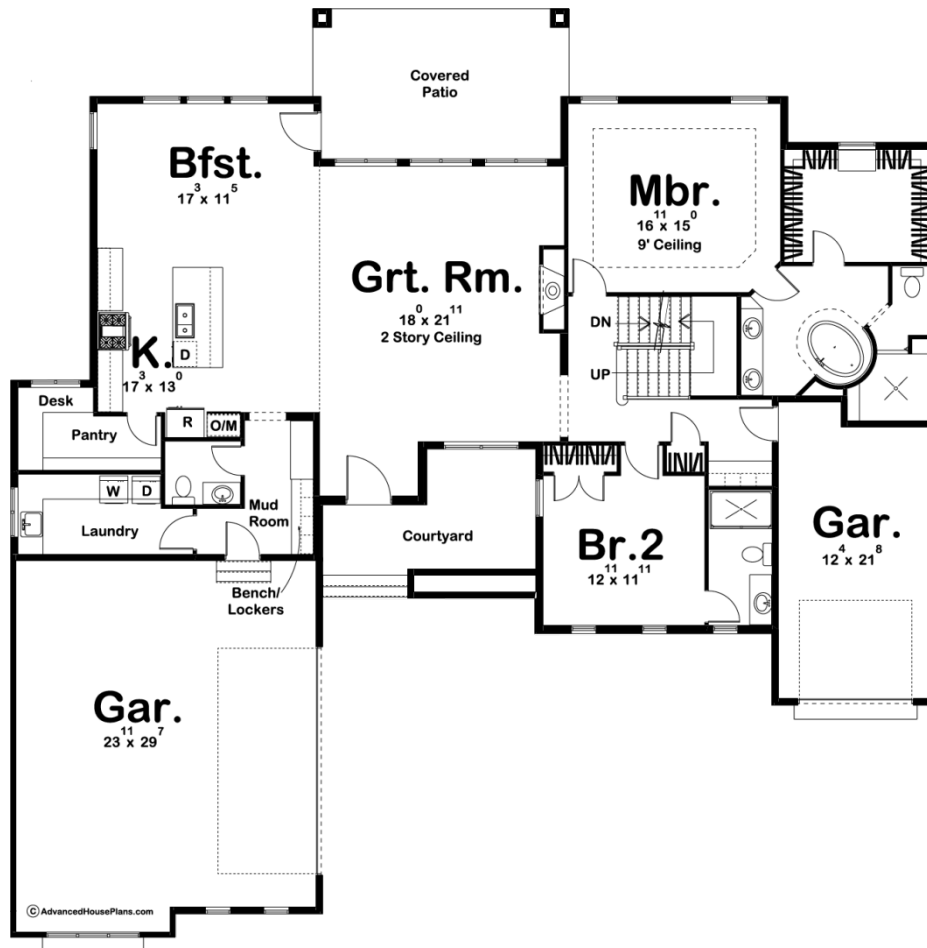
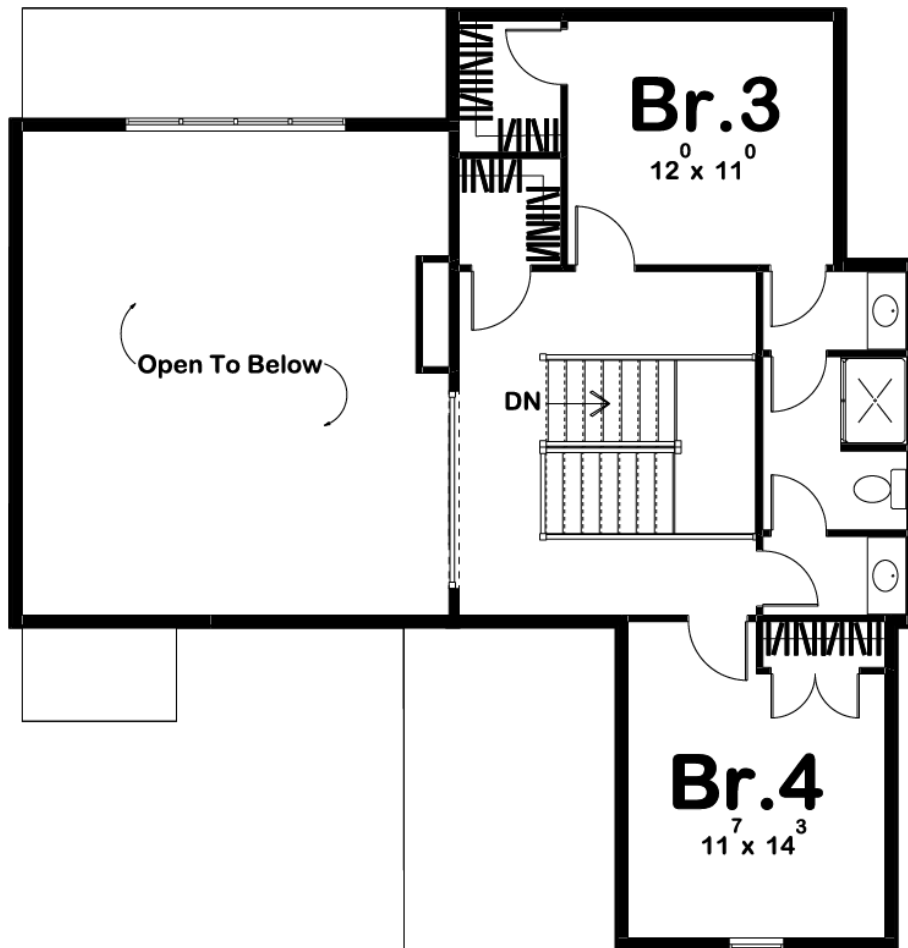




2969	4	4	3	74' 0"	74' 0"
SQ FT	BEDS	BATHS	BAYS	WIDE	DEEP





Construction Specs

Layout

Bedrooms	4
Bathrooms	4
Garage Bays	3

Square Footage

Main Level	2298 Sq. Ft.
Second Level	671 Sq. Ft.
Garage	1007 Sq. Ft.
Total Finished Area	2969 Sq. Ft.

Exterior Dimensions

Width	74' 0"
Depth	74' 0"
Ridge Height	29'
<i>Calculated from main floor line</i>	

Default Construction Stats
Stats are unique to the individual plan.

Foundation Type	Basement
Exterior Wall Construction	2x4
Roof Pitches	Primary 8/12, Secondary 4/12
Foundation Wall Height	9'
Main Wall Height	9'
Second Wall Height	8'

Plan Description

An appealing blend of textures enhance the exterior of this Craftsman style 1.5-story house plan. Upon entry, you have private access to an enjoyable courtyard that over looks the front drives. Inside, guests are welcomed by a 2-story-high entry that opens to the kitchen and breakfast area. Inside the pantry is a built in work station where all the kitchen recipes can be stored. On the opposite side of the first floor, a generously sized master suite is tucked away for privacy. The well-appointed master bath includes a freestanding tub, walk-in shower, compartmented toilet and walk-in closet. Also on the main floor plan of this 1.5 story house plan is a guest suite, the suite enjoys its own private bath. Two additional bedrooms occupy the second level, which offers a birds-eye view of the great room and entry area below. Bedrooms 3 and 4 share a Hollywood bath. Back on the main floor, the split 3-car garages entry into the home with easy access to separate mud rooms. What a fantastic Family Centered House Plan!