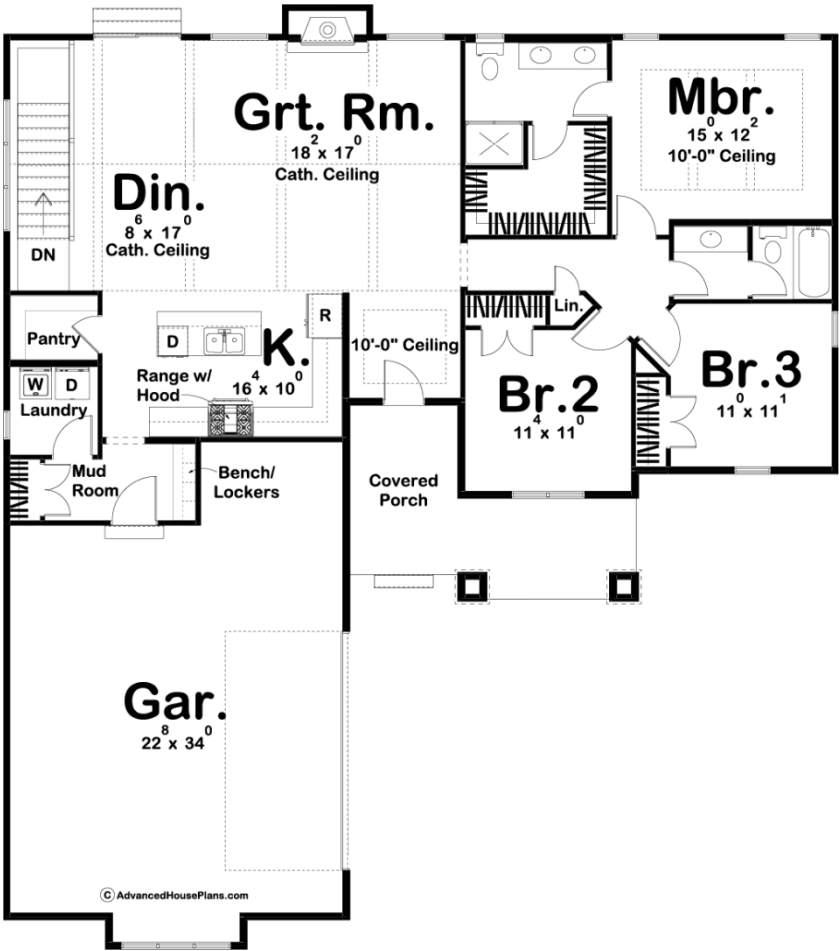




29692 - Thornton Data Sheet

1693 SQ FT	3 BEDS	2 BATHS	2 BAYS	57' 0" WIDE	64' 0" DEEP
---------------	-----------	------------	-----------	----------------	----------------



Construction Specs

Layout

Bedrooms

Bathrooms	2
Garage Bays	2
<b>Square Footage</b>	
Main Level	1693 Sq. Ft.
Garage	698 Sq. Ft.
Total Finished Area	1693 Sq. Ft.
<b>Exterior Dimensions</b>	
Width	57' 0"
Depth	64' 0"
<b>Default Construction Stats</b>	
<i>Stats are unique to the individual plan.</i>	
Foundation Type	Basement
Exterior Wall Construction	2x4
Roof Pitches	8/12 Primary, 4/12 Secondary
Foundation Wall Height	9'
Main Wall Height	9'

## Plan Description

An appealing blend of textures enhances the exterior of this Craftsman style 1-story house plan. Once inside you will find a beautifully arranged open floor plan. The great room is warmed by a fireplace and has a cathedral ceiling with exposed beams. Cooking will be a breeze in the kitchen that includes a large island with a breakfast bar and a walk-in pantry. The master suite includes his/her vanities and a walk-in closet. Bedrooms 2 and 3 share a conveniently located bathroom in the hall. The 2 car garage accesses the home through a mud room complete with bench and lockers.