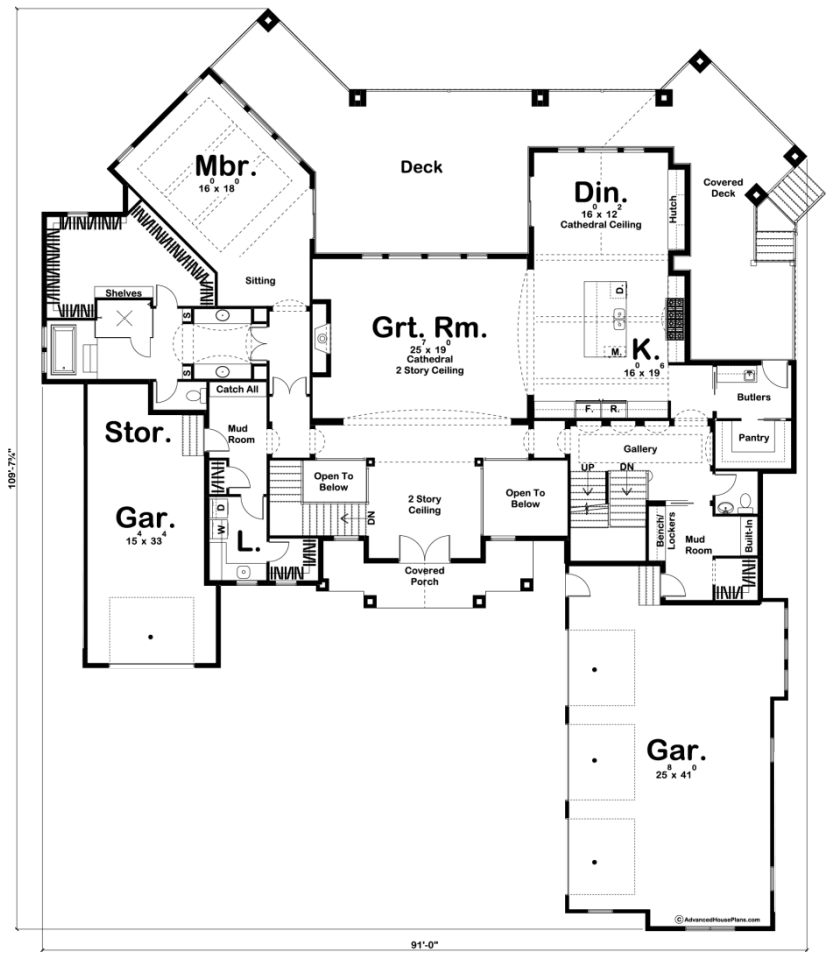
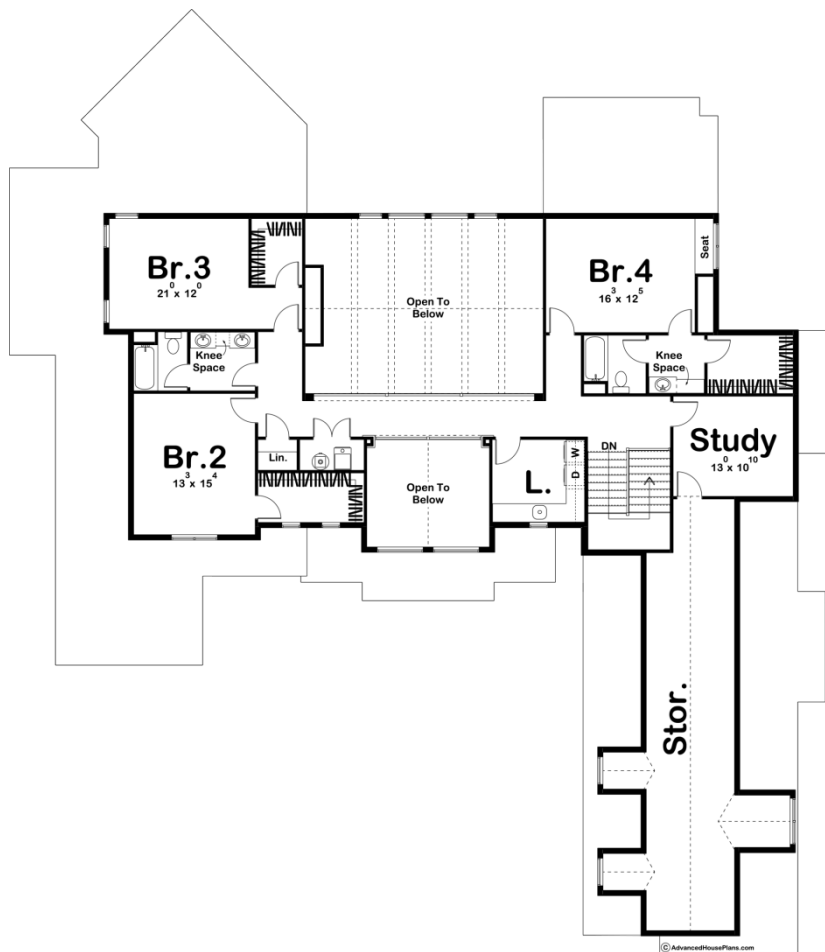




29527 - Southdale Data Sheet

| | | | | | |
|---------------|-----------|------------|-----------|----------------|-----------------|
| 4910 SQ FT | 4 BEDS | 4 BATHS | 4 BAYS | 91' 0" WIDE | 110' 0" DEEP |
|---------------|-----------|------------|-----------|----------------|-----------------|





Construction Specs

Layout

| | |
|-------------|---|
| Bedrooms | 4 |
| Bathrooms | 4 |
| Garage Bays | 4 |

Square Footage

| | |
|---------------------|--------------|
| Main Level | 3290 Sq. Ft. |
| Second Level | 1620 Sq. Ft. |
| Garage | 1454 Sq. Ft. |
| Total Finished Area | 4910 Sq. Ft. |

Exterior Dimensions

| | |
|--|---------|
| Width | 91' 0" |
| Depth | 110' 0" |
| Ridge Height | 35' |
| <i>Calculated from main floor line</i> | |

Default Construction Stats
Stats are unique to the individual plan.

| | |
|----------------------------|---------------------|
| Foundation Type | Basement |
| Exterior Wall Construction | 2x4 |
| Roof Pitches | 12/12 S-S, 8/12 F-B |
| Foundation Wall Height | 10' |
| Main Wall Height | 10' |
| Second Wall Height | 8' |

Plan Description

Classic Craftsman accents enhance the curb appeal of this remarkable 1.5-story house plan. As you enter through the grand entry, guests are treated to stunning views of a 2 story cathedral ceiling in the great room with a fireplace. The great room flows into a large open kitchen and dining room with a cathedral ceiling. The angled master suite enjoys seclusion from the main floor's living areas. Its bath area includes his and her vanities with a massive walk in closet and a walk in shower. This home is perfect for entertaining large groups with its huge deck area. On the upper level, you will find a study which leads to storage that spans above a 3 car garage. Next to the study is bedroom 4 which has its own bathroom and walk-in closet. As you walk across the catwalk you will have excellent views below to the great room and grand entrance on the way to bedroom 2 and 3. Bedroom 2 and 3 share a bathroom and each has a walk-in closet.