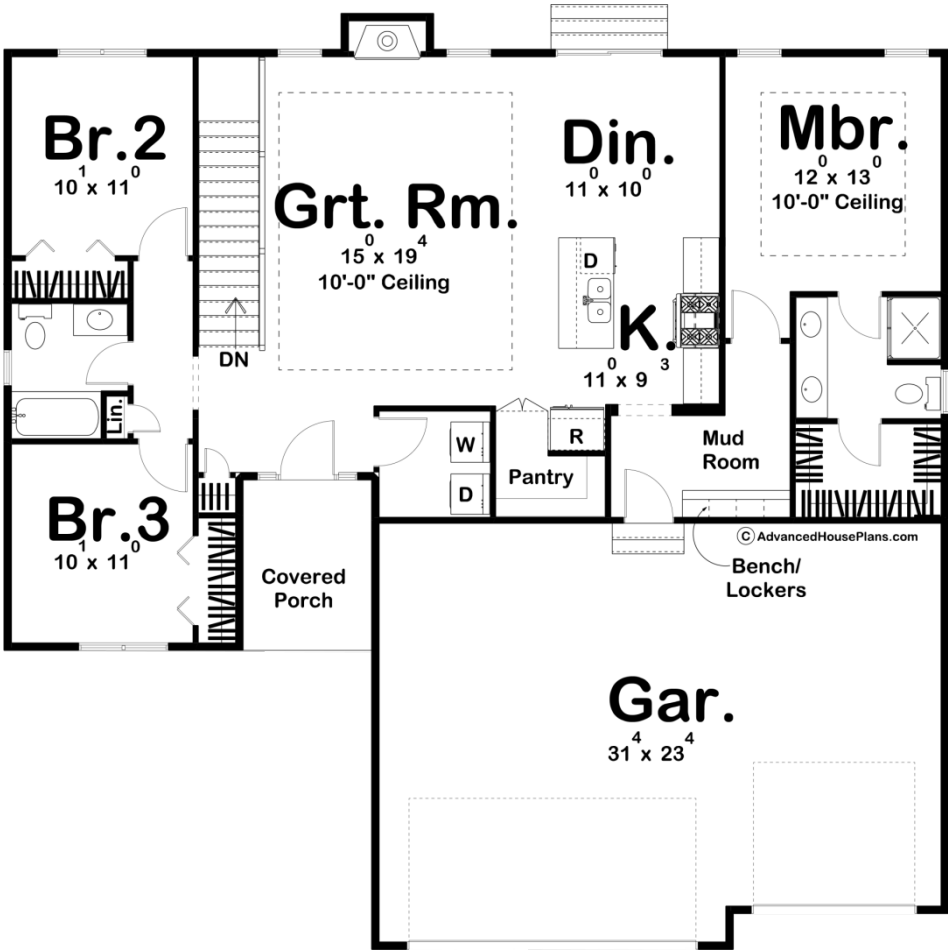




29658 - Sheffield Data Sheet

1457 SQ FT	3 BEDS	2 BATHS	3 BAYS	52' 6" WIDE	52' 0" DEEP
---------------	-----------	------------	-----------	----------------	----------------



Construction Specs

Layout

Bedrooms

Bathrooms	2
Garage Bays	3
Square Footage	
Main Level	1457 Sq. Ft.
Garage	733 Sq. Ft.
Total Finished Area	1457 Sq. Ft.
Exterior Dimensions	
Width	52' 6"
Depth	52' 0"
Ridge Height	23'
<i>Calculated from main floor line</i>	
Default Construction Stats	
<i>Stats are unique to the individual plan.</i>	
Foundation Type	Basement
Exterior Wall Construction	2x4
Roof Pitches	10/12 Primary, 8/12 Secondary
Foundation Wall Height	9'
Main Wall Height	9'

Plan Description

The Sheffield house plan is a Modern Farmhouse Ranch with a functional floor plan and unique exterior. It combines the use of board and batten siding, standing seam metal over the porch, a shed dormer, and an uncluttered look and feel. Doesn't it look great? Sheffield features an open floor plan that feels huge! It's got tons of space in the mudroom to keep your life, and this beautiful home, organized. The Master Suite is generously sized with dual vanities and a spacious walk-in closet. Check out our other small house plans!