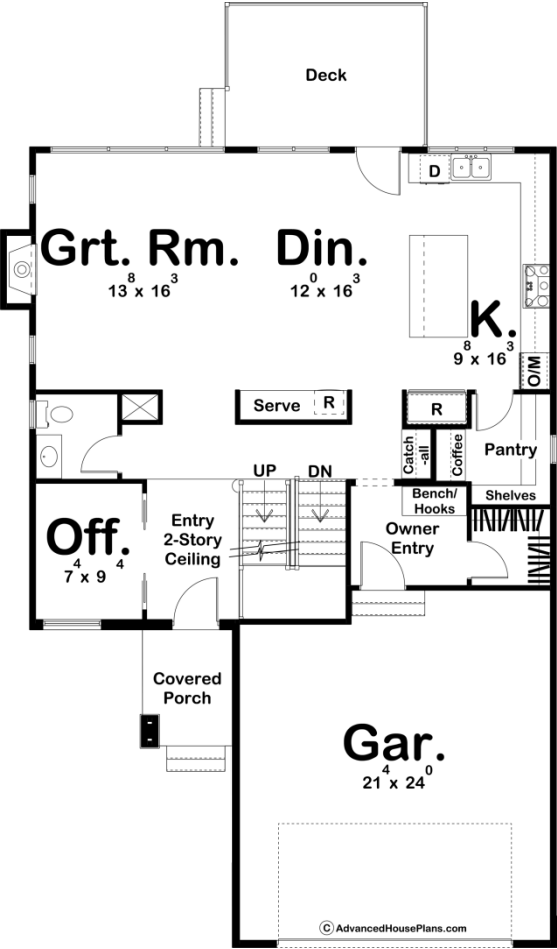
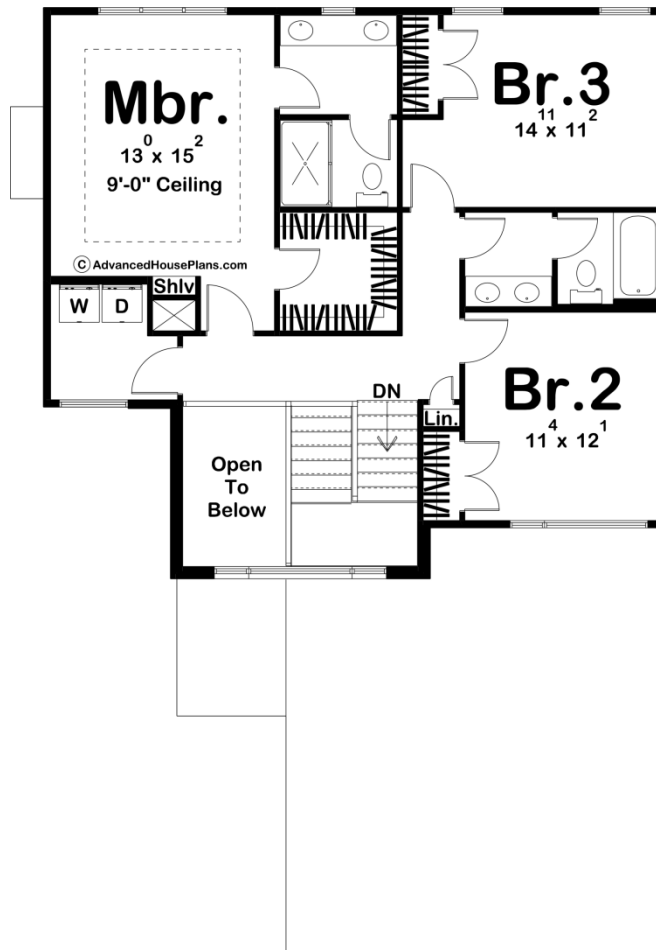




29884 - Russell Data Sheet

2077 SQ FT	3 BEDS	3 BATHS	2 BAYS	38' 0" WIDE	55' 0" DEEP
---------------	-----------	------------	-----------	----------------	----------------





## Construction Specs

### Layout

Bedrooms	3
Bathrooms	3
Garage Bays	2

### Square Footage

Main Level	1143 Sq. Ft.
Second Level	934 Sq. Ft.
Garage	517 Sq. Ft.
Total Finished Area	2077 Sq. Ft.

### Exterior Dimensions

Width	38' 0"
Depth	55' 0"

### Default Construction Stats

*Stats are unique to the individual plan.*

Foundation Type	Basement
-----------------	----------

Exterior Wall Construction	2x4
Roof Pitches	4/12 Primary
Foundation Wall Height	9'
Main Wall Height	9'
Second Wall Height	8'

## Plan Description

The Russell plan is an elegant Modern Prairie style house plan. The exterior is highlighted by a combination of stone, brick, stucco, and cedar that create a wonderful facade. Inside the home, a pocket office is situated right off of the 2 story entry. Further, into the home, the great room, dining room, and kitchen are arranged in a wonderful open floor plan. The kitchen includes a large kitchen island and a walk-in pantry with a coffee bar. A deck is accessed off the rear of the home for your outdoor entertainment. The second floor includes 3 bedrooms including the master suite that features a walk-in closet and his/her vanities.