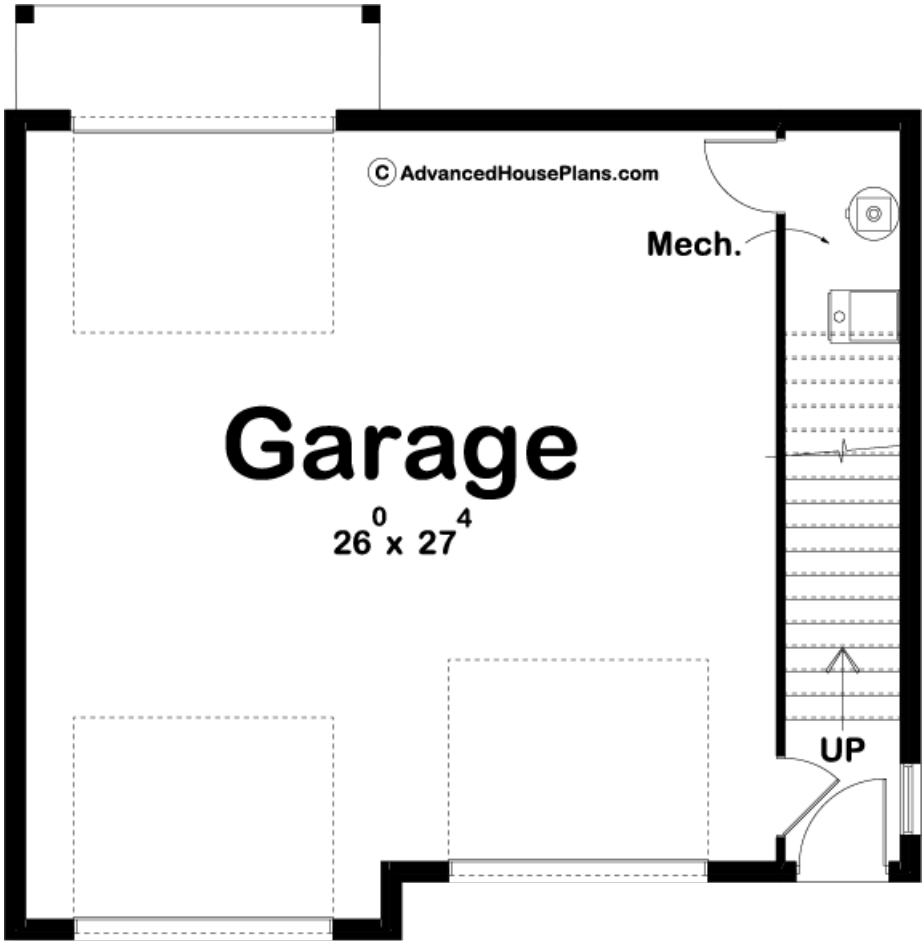
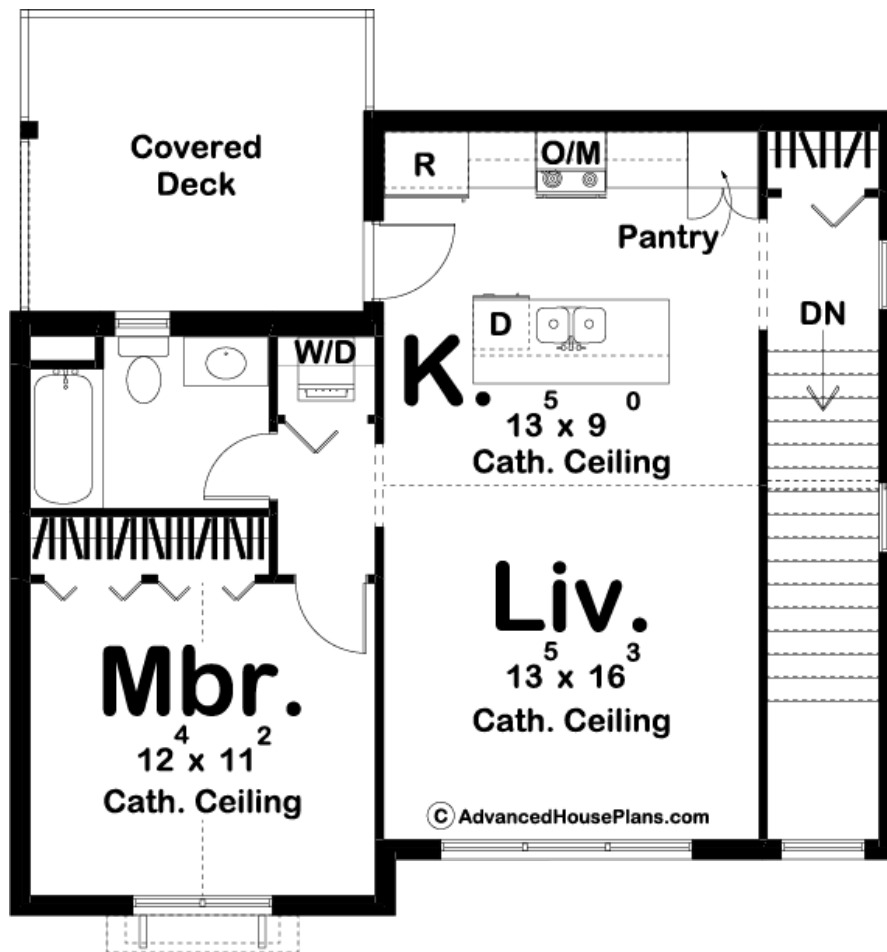




29749 - Riesling Data Sheet

716 SQ FT	1 BEDS	1 BATHS	2 BAYS	31' 0" WIDE	32' 0" DEEP
--------------	-----------	------------	-----------	----------------	----------------





## Construction Specs

### Layout

Bedrooms	1
Bathrooms	1
Garage Bays	2

### Square Footage

Second Level	716 Sq. Ft.
Garage	832 Sq. Ft.
Total Finished Area	716 Sq. Ft.

### Exterior Dimensions

Width	31' 0"
Depth	32' 0"

### Default Construction Stats

*Stats are unique to the individual plan.*

Foundation Type	Slab
Exterior Wall Construction	2x4

Roof Pitches	6/12 Primary, 10/12 Secondary
Main Wall Height	9'
Second Wall Height	8'

Plan Description

On the main level of this beautiful Carriage House, you will find a 2 car garage that includes a drive-through stall. Upstairs, there is a fantastic 1 bedroom apartment. The cathedral ceilings make the living space and master bedroom feel open. The kitchen includes a pantry and a kitchen island with a snack bar. There is a perfect rear covered deck for outdoor entertainment.