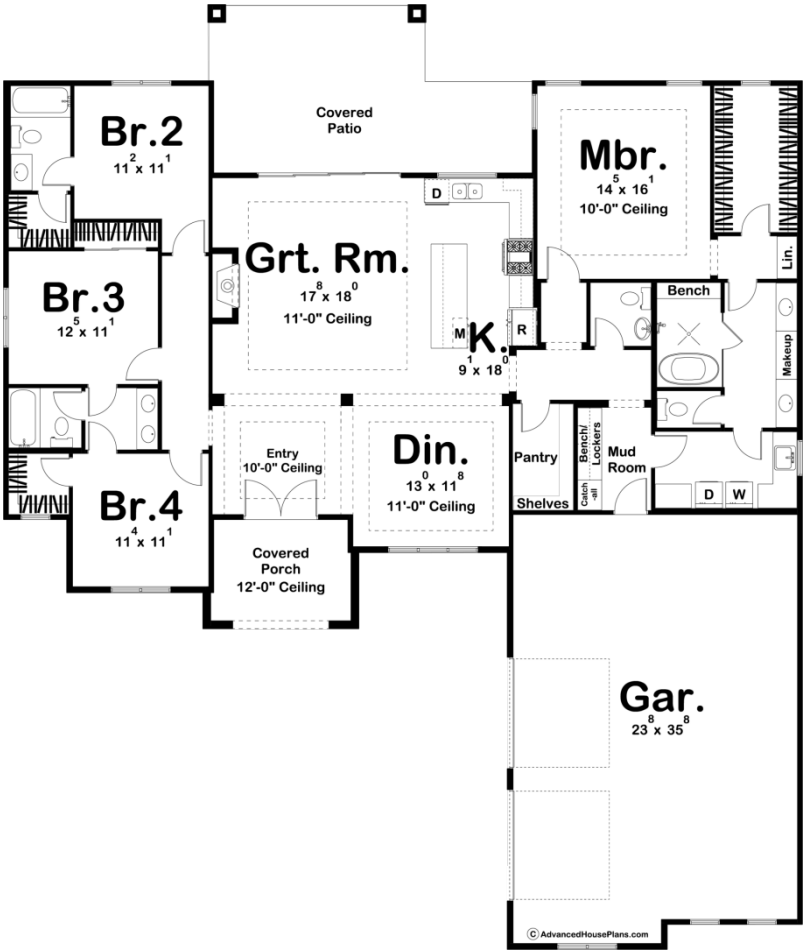




30124 - Palm Harbor Data Sheet

| | | | | | |
|---------------|-----------|------------|-----------|----------------|----------------|
| 2306 SQ FT | 4 BEDS | 4 BATHS | 2 BAYS | 67' 0" WIDE | 79' 0" DEEP |
|---------------|-----------|------------|-----------|----------------|----------------|



Construction Specs

Layout

Bedrooms

| | |
|--|--------------|
| Bathrooms | 4 |
| Garage Bays | 2 |
| Square Footage | |
| Main Level | 2306 Sq. Ft. |
| Covered Area | 426 Sq. Ft. |
| Garage | 852 Sq. Ft. |
| Total Finished Area | 2306 Sq. Ft. |
| Exterior Dimensions | |
| Width | 67' 0" |
| Depth | 79' 0" |
| Default Construction Stats <i>Stats are unique to the individual plan.</i> | |
| Foundation Type | Slab |
| Exterior Wall Construction | 2x4 |
| Roof Pitches | 4/12 Primary |
| Main Wall Height | 9' |

Plan Description

The Palm Harbor is a stunning Mediterranean style 1 story house plan. The amazing exterior showcases stone, stucco, and wood accents to give this house a very Tuscan style feel. A large covered porch with a 12' ceiling leads through a set of French doors into the home. Just off the entry, you'll find an amazing formal dining room that lies under an 11' trayed ceiling. The flow of this floor plan provides a very open feel. The great room lies under its own 11' ceiling and is warmed by a fireplace. A large set of sliding doors opens up from the great room to the rear covered patio. The kitchen includes a large island with a snack bar and a walk-in pantry. Behind the kitchen, on the right side of the home, you'll find the elegant master suite. The master bathroom includes a wet room with a soaking tub, his/her vanities, an enclosed toilet area, a large walk-in closet, and laundry room access. On the left side of the home, bedroom 2 has its own bathroom and bedrooms 3 and 4 share a Jack and Jill bathroom. The homes beautiful oversized 2 car courtyard load garage accesses the home through a convenient mudroom that features a catch-all and a bench with lockers.