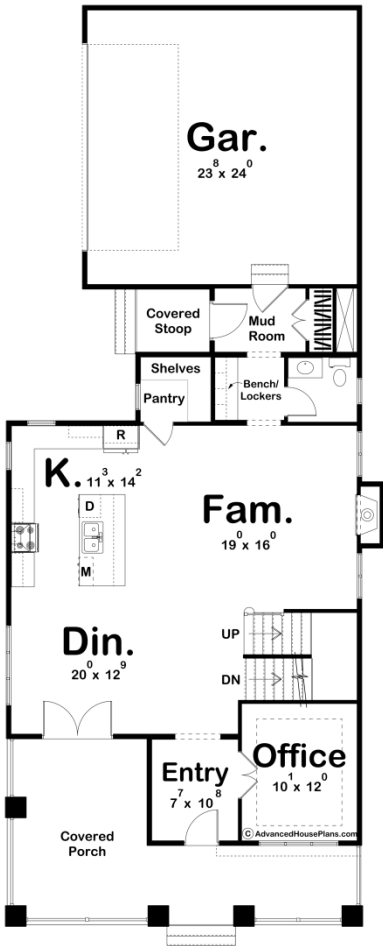
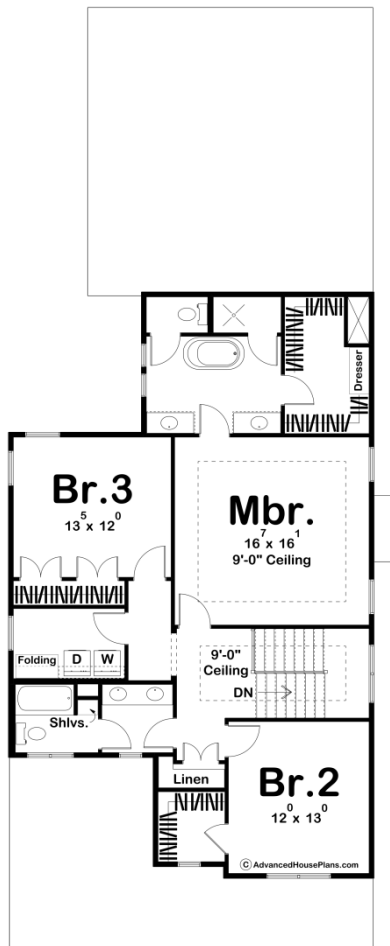




30165 - Oakwood Park Data Sheet

| | | | | | |
|---------------|-----------|------------|-----------|----------------|----------------|
| 2415 SQ FT | 3 BEDS | 3 BATHS | 2 BAYS | 33' 0" WIDE | 80' 4" DEEP |
|---------------|-----------|------------|-----------|----------------|----------------|





Construction Specs

Layout

| | |
|-------------|---|
| Bedrooms | 3 |
| Bathrooms | 3 |
| Garage Bays | 2 |

Square Footage

| | |
|---------------------|--------------|
| Main Level | 1218 Sq. Ft. |
| Second Level | 1197 Sq. Ft. |
| Covered Area | 367 Sq. Ft. |
| Garage | 592 Sq. Ft. |
| Total Finished Area | 2415 Sq. Ft. |

Exterior Dimensions

| | |
|-------|--------|
| Width | 33' 0" |
| Depth | 80' 4" |

Default Construction Stats

Stats are unique to the individual plan.

| | |
|----------------------------|------------------------------|
| Foundation Type | Basement |
| Exterior Wall Construction | 2x4 |
| Roof Pitches | 8/12 Primary, 6/12 Secondary |
| Foundation Wall Height | 9' |
| Main Wall Height | 9' |
| Second Wall Height | 8' |

Plan Description

Oakwood Park is a beautiful Craftsman style 2 story house plan. The excellent exterior highlights include shake siding, a large front covered porch with a metal roof, and wood accents. Just inside the front door, you'll find yourself in the entry. Adjacent to the entry is the amazing home office that is perfect for anyone who works from home. The kitchen, dining, and family room are laid out in a wonderful open layout. The kitchen includes a large island with a snack bar and a walk-in pantry. The family room is warmed by a fireplace and has 2 large windows to allow in natural light. Upstairs you'll find the home's 3 bedrooms. The master suite includes an amazing bathroom. The master bathroom has his/her vanities, a soaking tub, and enclosed toilet area, and a large walk-in closet with a built-in dresser. Bedrooms 2 and 4 share a centrally located hall bathroom. Back on the main level, the home's 2 car garage is situated to the rear of the home. The garage accesses the home through a convenient mud room with a coat closet.