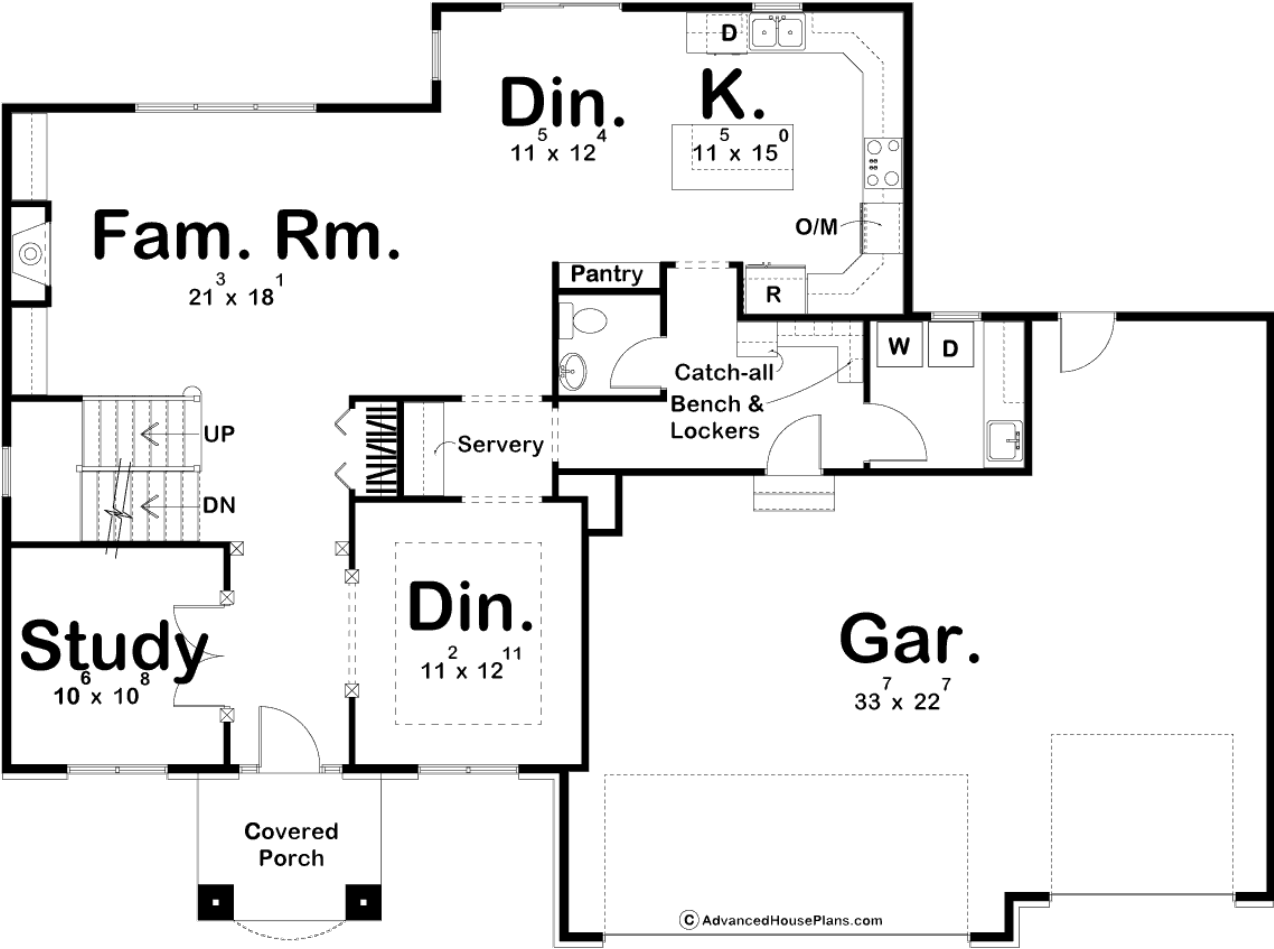
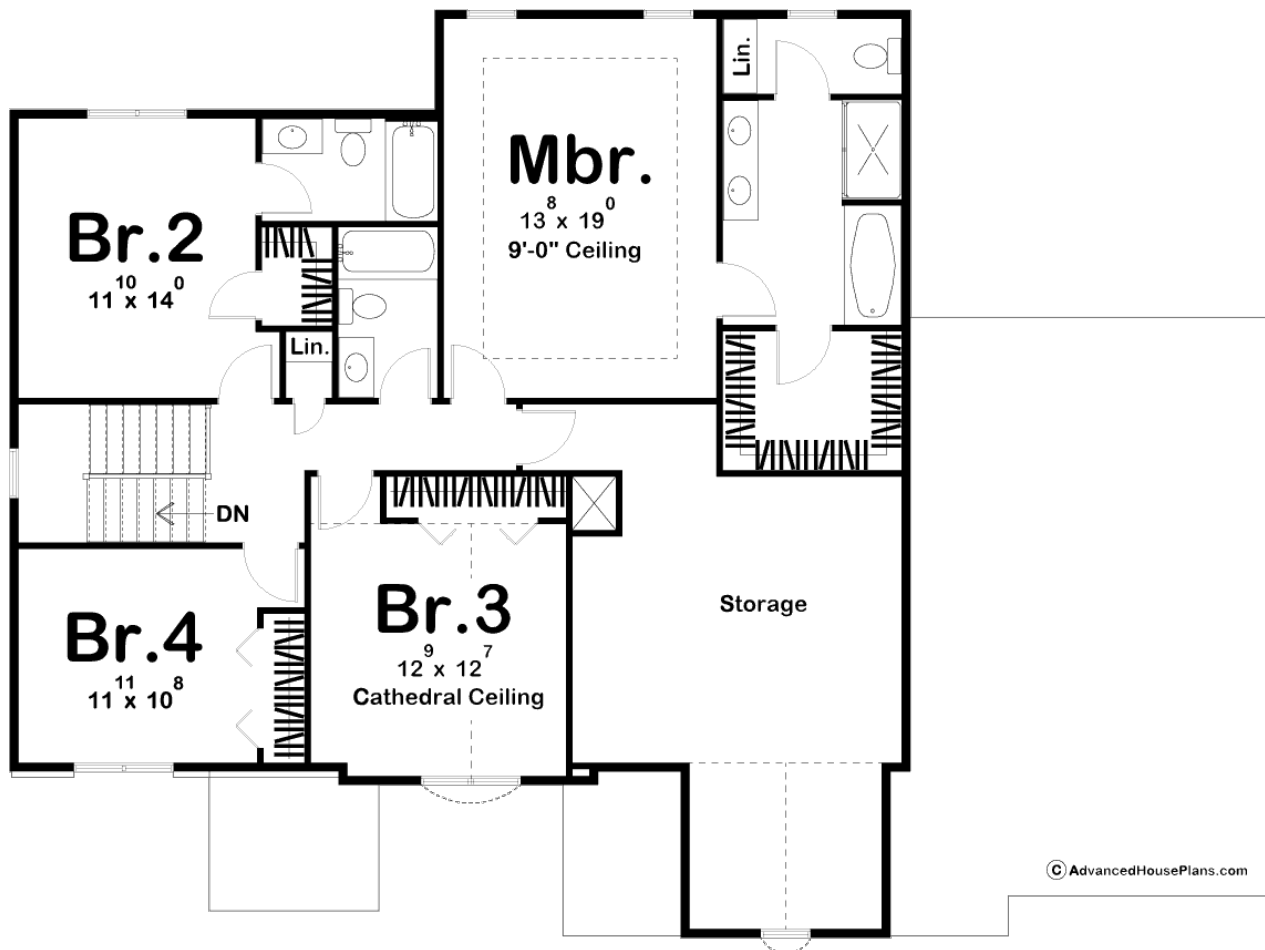




29165 - Lundstrom Data Sheet

2672 SQ FT	3 BEDS	4 BATHS	3 BAYS	63' 0" WIDE	47' 0" DEEP
---------------	-----------	------------	-----------	----------------	----------------





Construction Specs

Layout

Bedrooms	3
Bathrooms	4
Garage Bays	3

Square Footage

Main Level	1420 Sq. Ft.
Second Level	1252 Sq. Ft.
Garage	858 Sq. Ft.
Total Finished Area	2672 Sq. Ft.

Exterior Dimensions

Width	63' 0"
Depth	47' 0"
Ridge Height	32'
<i>Calculated from main floor line</i>	

Default Construction Stats
Stats are unique to the individual plan.

Foundation Type	Basement
Exterior Wall Construction	2x4
Roof Pitches	8/1 Primary, 10/12 Secondary
Foundation Wall Height	9'
Main Wall Height	9'
Second Wall Height	8'

Plan Description

Solid, Traditional styling and family-friendly room arrangements make this 2,672 sq. ft. 2-story house plan a favorite choice for builders and buyers alike. Just inside from the covered front porch, the entry hall is flanked by a den and formal dining room with adjacent servery alcove. Further inside, an expansive great room offers ample space for entertaining family and friends. The great room is granted a sense of warmth from its fireplace and built-in bookshelves. Easy entertaining flows seamlessly into the breakfast area and island kitchen, which features an abundance of wrap-around counter space. Just off the kitchen in this home plan is a practical utility area features a powder bath, laundry room and mudroom with built-in bench. The mudroom accesses the home's 3-car garage, which includes space for a work area or storage. Upstairs, the master suite features a soaking tub, shower, compartmented toilet, and walk-in closet. Bedroom 2 has its own bath, while bedrooms 3 and 4 share a hall bath. An unfinished storage area adds 376 sq. ft. of imaginative space.