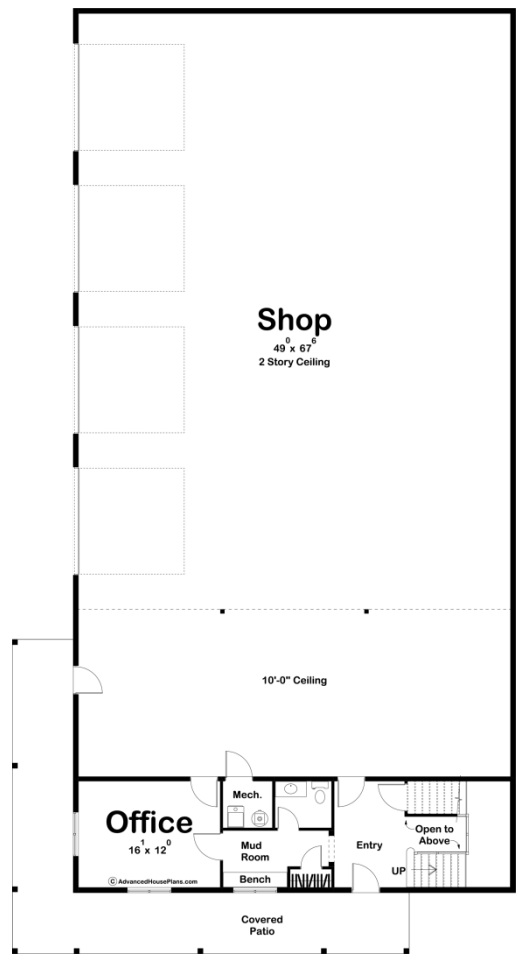
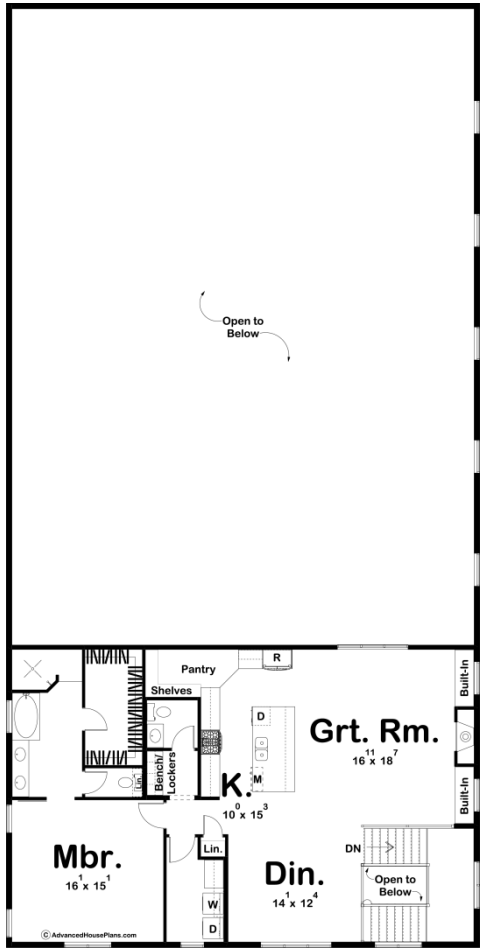




30089 - Louisburg Data Sheet

2057 SQ FT	1 BEDS	3 BATHS	8 BAYS	50' 0" WIDE	107' 0" DEEP
---------------	-----------	------------	-----------	----------------	-----------------





Construction Specs

Layout		
Bedrooms		1
Bathrooms		3
Garage Bays		8
Square Footage		
Main Level		620 Sq. Ft.
Second Level		1437 Sq. Ft.
Garage		4347 Sq. Ft.
Total Finished Area		2057 Sq. Ft.
Exterior Dimensions		
Width		50' 0"
Depth		107' 0"
Default Construction Stats		
Stats are unique to the individual plan.		
Foundation Type		Slab

Exterior Wall Construction	2x6
Roof Pitches	6/12 Primary, 4/12 Secondary
Main Wall Height	10'
Second Wall Height	9'

## Plan Description

If you've ever wondered what a "Shouse" is....it's this plan. A Shouse is a shop and a house under one roof. The Louisburg plan is a massive shop with a fully functional living quarters on the second floor. The shop area comes in at over 4000 sq. ft. and is a great place for any hobbyist or anyone who works in their garage daily. An office is just off the shop area and provides a great space to run your business from. On the second floor, you'll find an absolutely amazing 1 bedroom apartment. The great room is warmed by a fireplace that is flanked by built-in bookshelves. The full kitchen includes a large island and a deep walk-in pantry. The master bedroom includes a walk-in shower, dual vanity, a soaking tub, and a large walk-in closet.