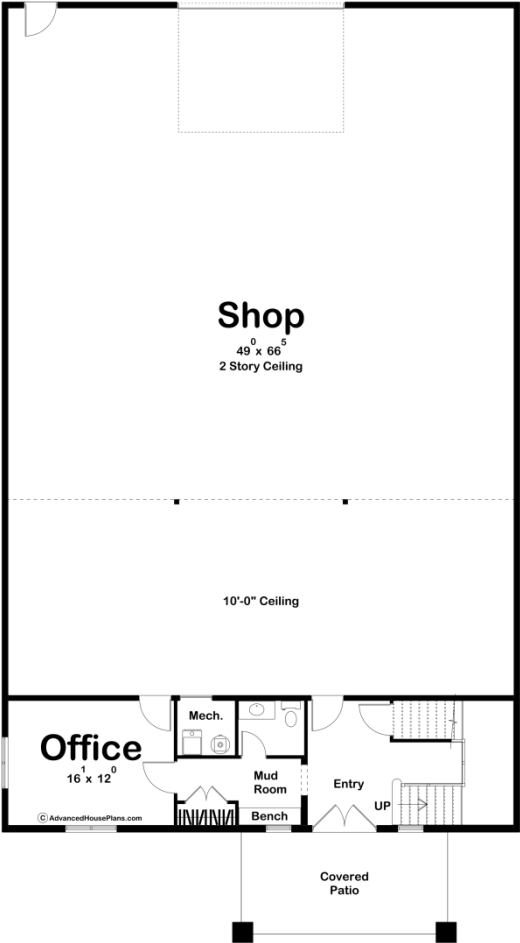
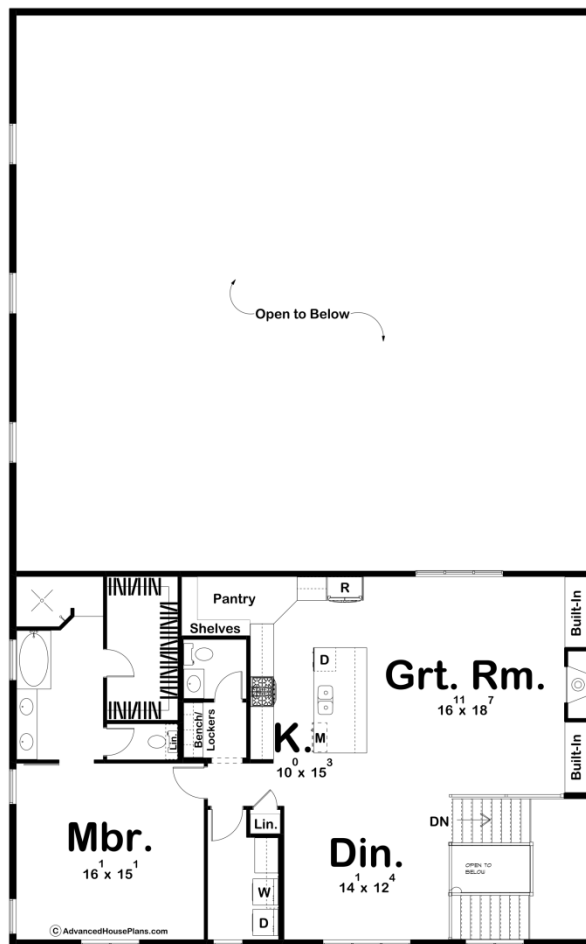




30088 - Lockwood Data Sheet

|               |           |            |           |                |                |
|---------------|-----------|------------|-----------|----------------|----------------|
| 2057<br>SQ FT | 1<br>BEDS | 3<br>BATHS | 6<br>BAYS | 50' 0"<br>WIDE | 90' 0"<br>DEEP |
|---------------|-----------|------------|-----------|----------------|----------------|





## Construction Specs

### Layout

|             |   |
|-------------|---|
| Bedrooms    | 1 |
| Bathrooms   | 3 |
| Garage Bays | 6 |

### Square Footage

|                     |              |
|---------------------|--------------|
| Main Level          | 620 Sq. Ft.  |
| Second Level        | 1437 Sq. Ft. |
| Garage              | 3385 Sq. Ft. |
| Total Finished Area | 2057 Sq. Ft. |

### Exterior Dimensions

|       |        |
|-------|--------|
| Width | 50' 0" |
| Depth | 90' 0" |

### Default Construction Stats

*Stats are unique to the individual plan.*

|                 |      |
|-----------------|------|
| Foundation Type | Slab |
|-----------------|------|

|                            |              |
|----------------------------|--------------|
| Exterior Wall Construction | 2x6          |
| Roof Pitches               | 6/12 Primary |
| Main Wall Height           | 10'          |
| Second Wall Height         | 9'           |

## Plan Description

If you've ever wondered what a "Shouse" is....it's this plan. A Shouse is a shop and a house under one roof. The Lockwood plan is a massive shop with fully functional living quarters on the second floor. The shop area comes in at over 3000 sq. ft. and is a great place for any hobbyist or anyone who works in their garage daily. An office is just off the Barndominium shop area and provides a great space to run your business from. On the Barndominium's second floor, you'll find an absolutely amazing 1 bedroom apartment. The great room is warmed by a fireplace that is flanked by built-in bookshelves. The full kitchen includes a large island and a deep walk-in pantry. The master bedroom includes a walk-in shower, dual vanity, a soaking tub, and a large walk-in closet.