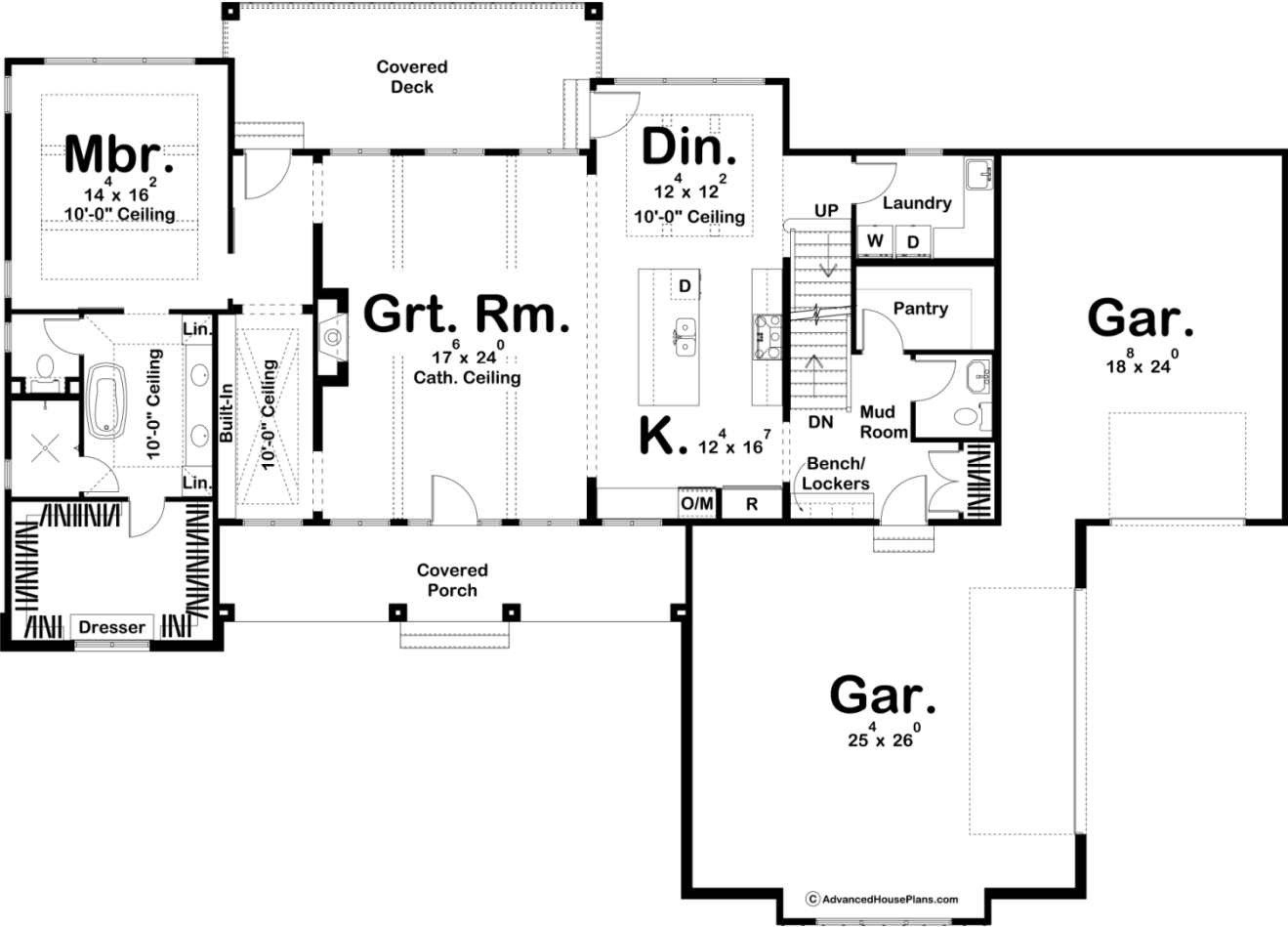
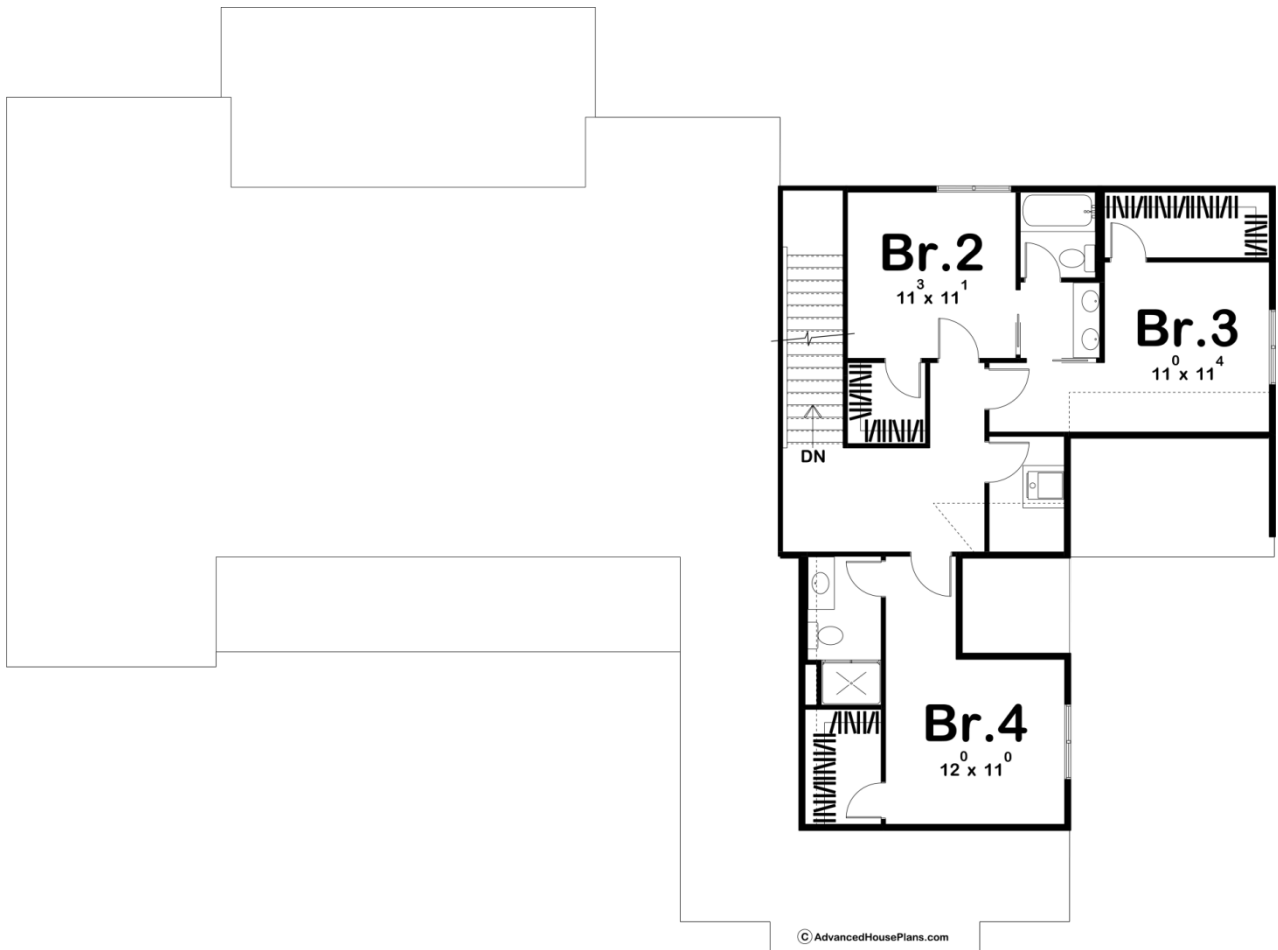




29694 - Keegan Data Sheet

2736 SQ FT	4 BEDS	4 BATHS	3 BAYS	85' 0" WIDE	61' 0" DEEP
---------------	-----------	------------	-----------	----------------	----------------





## Construction Specs

Layout		
Bedrooms		4
Bathrooms		4
Garage Bays		3
Square Footage		
Main Level		1882 Sq. Ft.
Second Level		854 Sq. Ft.
Garage		1129 Sq. Ft.
Total Finished Area		2736 Sq. Ft.
Exterior Dimensions		
Width		85' 0"
Depth		61' 0"
Default Construction Stats		
<i>Stats are unique to the individual plan.</i>		
Foundation Type		Basement

Exterior Wall Construction	2x4
Roof Pitches	12/12 Primary, 8/12 6/12 Secondary
Foundation Wall Height	9'
Main Wall Height	9'
Second Wall Height	8'

## Plan Description

This 1.5-story plan defines Modern Farmhouse style with its mixture of exterior textures including board and batten siding, white brick, and metal roofing. Inside, immediate impressions are made by a soaring wood-beamed cathedral ceiling in the great room. An abundance of windows floods the great room with natural light. The kitchen, with an expansive work island, is open to the dining area. Away from the living areas, the main floor's master suite features a large walk-in closet, and his and her vanities in the bath. Upstairs, bedroom 2 and 3 share a Jack-n-Jill bath while bedroom 4 has its own private bathroom. Back on the main level, the generously proportioned 3-car garage includes ample space. It accesses the home through a mudroom, complete with bench, lockers and a coat closet.