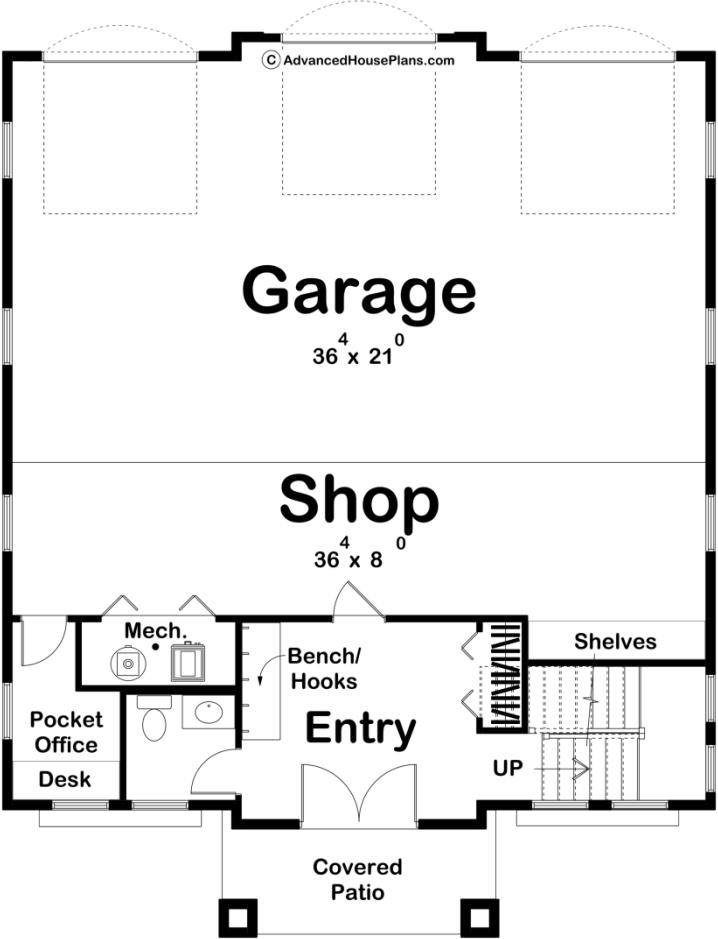
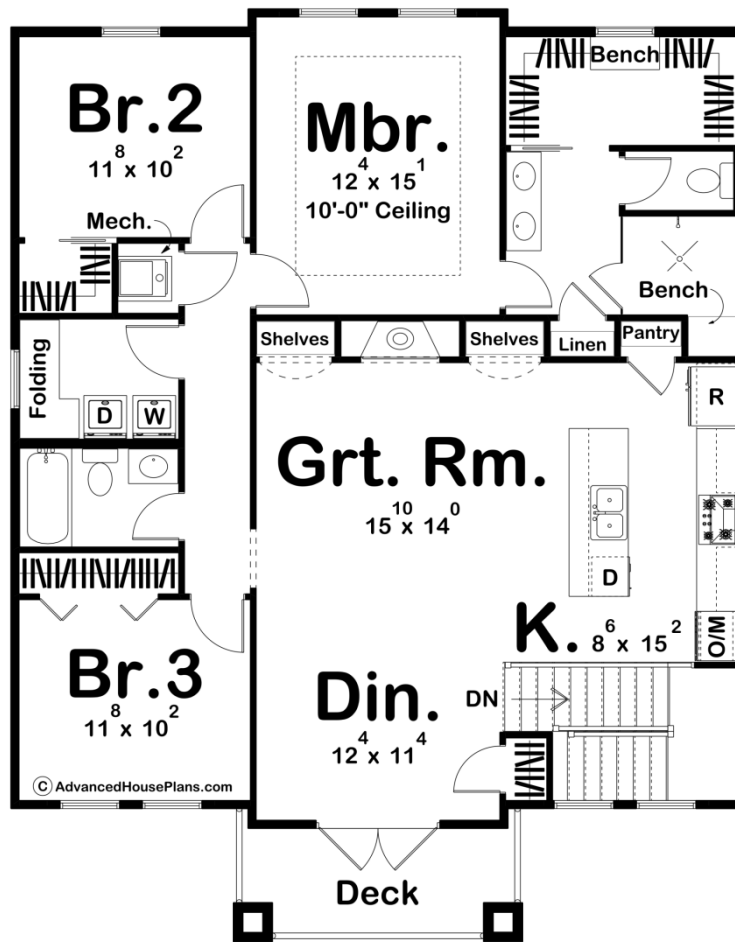




30214 - Jude Data Sheet

1754 SQ FT	3 BEDS	3 BATHS	3 BAYS	37' 0" WIDE	47' 0" DEEP
---------------	-----------	------------	-----------	----------------	----------------





## Construction Specs

### Layout

Bedrooms	3
Bathrooms	3
Garage Bays	3

### Square Footage

Main Level	355 Sq. Ft.
Second Level	1399 Sq. Ft.
Covered Area	83 Sq. Ft.
Garage	1098 Sq. Ft.
Total Finished Area	1754 Sq. Ft.

### Exterior Dimensions

Width	37' 0"
Depth	47' 0"

### Default Construction Stats

*Stats are unique to the individual plan.*

Foundation Type	Slab
Exterior Wall Construction	2x4
Roof Pitches	Primary 8/12, Secondary 14/12
Main Wall Height	10'
Second Wall Height	9'

## Plan Description

The Jude plan is a Modern European Cottage that would fit in, in just about any location you put it. With the touches of a cottage style along with the modern curb appeal, it is a plan that could go coast to coast. This plan has a large three car garage, accompanied by a shop area and office that lead into the entryway. This unique floor plan carries you upstairs to the home, giving the illusion of a multidimensional home while still being practical. Upstairs you will find all the bedrooms, as well as the great room and kitchen. The Jude plan has a great open space for entertaining, but a closed off area for bedrooms. The Master bedroom is connected with two large walk-in closets, as well as a double vanity while bedrooms two and three share a bathroom.