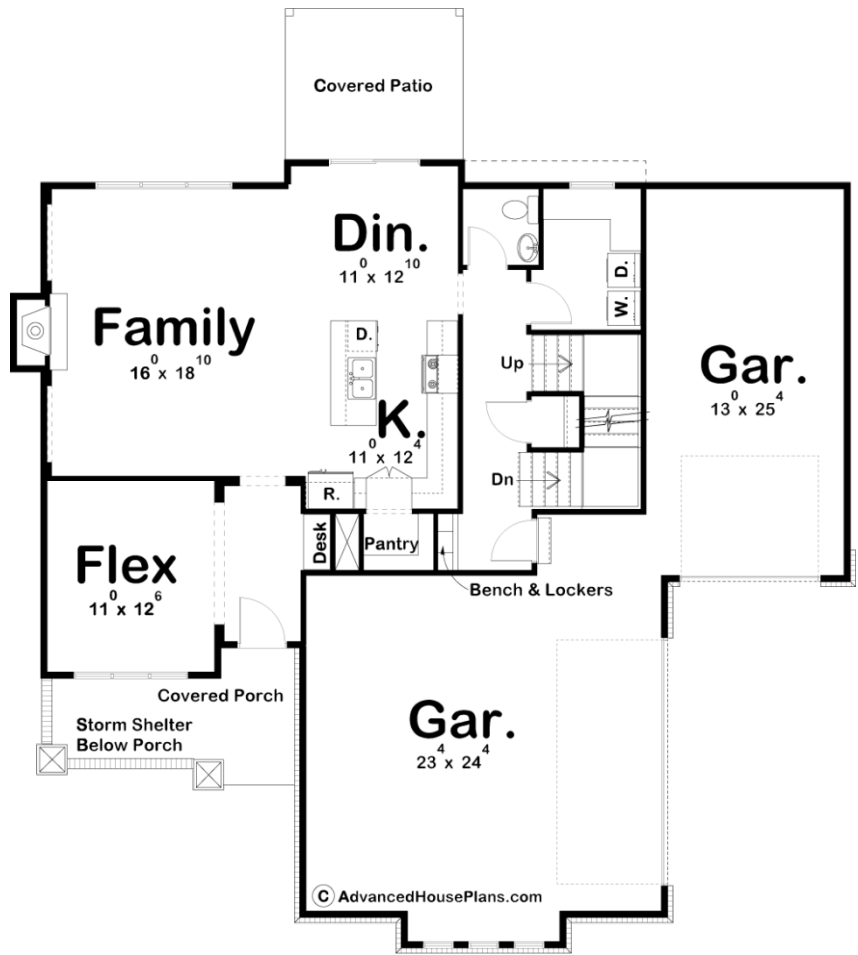
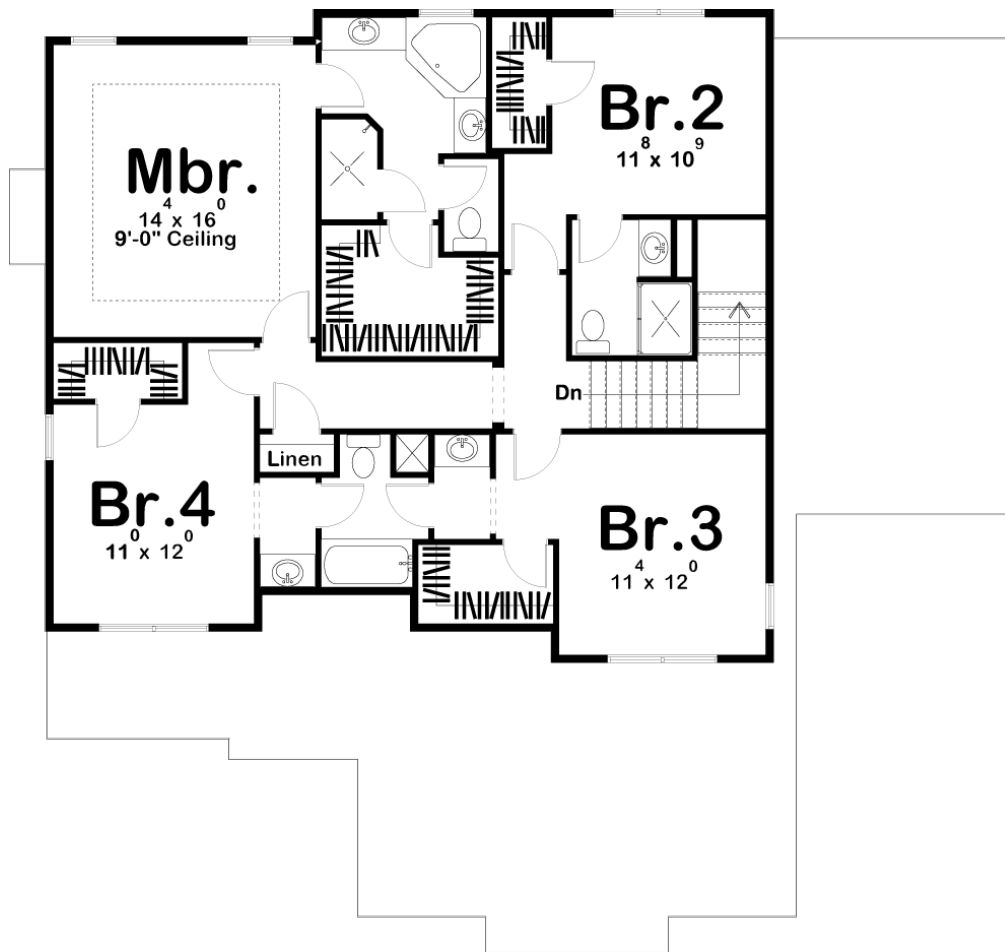




29346 - Hollandale Data Sheet

2363 SQ FT	4 BEDS	4 BATHS	3 BAYS	53' 0" WIDE	62' 0" DEEP
---------------	-----------	------------	-----------	----------------	----------------





## Construction Specs

### Layout

Bedrooms	4
Bathrooms	4
Garage Bays	3

### Square Footage

Main Level	1105 Sq. Ft.
Second Level	1258 Sq. Ft.
Garage	931 Sq. Ft.
Total Finished Area	2363 Sq. Ft.

### Exterior Dimensions

Width	53' 0"
Depth	62' 0"
Ridge Height	26'
<i>Calculated from main floor line</i>	

**Default Construction Stats**  
*Stats are unique to the individual plan.*

Foundation Type	Basement
Exterior Wall Construction	2x4
Roof Pitches	6/12
Foundation Wall Height	9'
Main Wall Height	9'
Second Wall Height	8'

**Plan Description**

Hollandale is a 2 story Modern Prairie-style masterpiece! Along with a gorgeous facade, this house plan has many great Family-Centered features that make this an excellent plan for builders and homeowners alike. This house plan is designed with deep overhangs and a contemporary nod to the famous prairie-style home. The elevation combines the use of brick and stucco, with a fantastic covered porch shielded by a brick half-wall for privacy. The main floor features a well-designed kitchen with walk-in pantry, flex room, and covered patio out back. The stairs are tucked away from the public areas of the house, giving it a private feel and more conveniently accessed from the garage entrance which has bench and lockers integrated into the wall for a simple, efficient drop zone. The second floor features a generously-sized master suite, with tray ceiling, corner tub, and large walk-in closet. Each of the secondary bedrooms has a walk-in closet and private bath access.